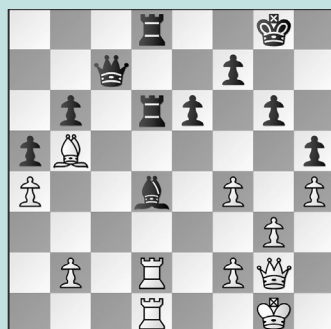


I NORM NEW YORK

WEDNESDAY WORKOUT ■ JANUARY 25, 2023

BY JJ LANG

PUZZLE 1.



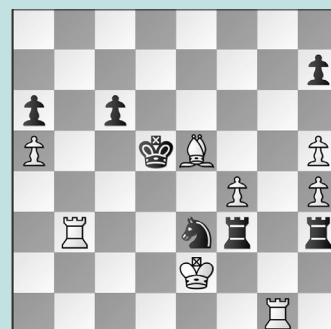
BLACK TO MOVE

PUZZLE 2.



BLACK TO MOVE

PUZZLE 3.



WHITE TO MOVE

PUZZLE 4.



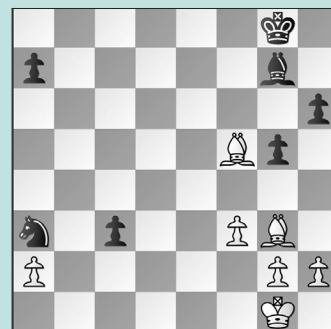
WHITE TO MOVE

PUZZLE 5.



WHITE TO MOVE

PUZZLE 6.



WHITE TO MOVE

SOLUTIONS

PUZZLE 1. 27. ... Bxf2+, White resigned, as after 28. Qxf2 Rxd2 29. Rxd2 Qc1+ Black nets the rook. (Kaliksteyn – Stremavicius, New York Winter Invitational GM A, 2023) **PUZZLE 2. 53. ... d4** The only winning move. **54. Ra1 Kd5 55. Kf3** After 55. Rc1 d3 Black can reach a winning Lucena with 56. Rc8 Kd4 57. Kf3 Re6 58. Rd8+ Kc3 59. Rc8+ Kd2. **55. ... Re8** The key move: by keeping White's king cut off, Black's king has enough time to 'shimmy' in front of the d-pawn. **56. Rd1 Kc4 57. Rc1+ Kb3**, and Black went on to win. (Lee – Xu, New York Winter Invitational IM D, 2023) **PUZZLE 3. 43. Rd3+ Ke6 44. Rd6+ Ke7 45. Rg7+ Ke8** Now, the most immediate win was 46. Bf6 as Black has nothing but spite checks to avoid

mate on d8. **46. Re6+ Kf8 47. Rxc6**, and White went on to win. (Stearman – Oberoi, New York Winter Invitational GM B, 2023) **PUZZLE 4. 17. fxe5** Black has just made a massive positional blunder. **17. ... hxe5 18. Nf5** An essential move: the f6-knight is under-protected. **18. ... gxe4 19. Nxd6 Qxd6 20. Rxf6 Qg3 21. Bg6!** The positional advantage suddenly becomes a tactical one, and White went on to win shortly. (Schitco – Levine, New York Winter Invitational GM A, 2023) **PUZZLE 5. 15. Bxe7+** The sac works! **15. ... Kh8** Black should have tried 15. ... Kxh7 giving White one more chance to err. 16. Qc2+! (16. Ng5+?? Bxe5 17. hxe5+ Kg8 Black is fine here, as White has no time to play for mate. 18. Qh5? Qf2+ 19. Kd1 Qf1+ 20. Kd2 Qd3+ 21. Ke1 Rf1 mate) The key move, covering

the f2-square with tempo. Black's knight now hangs. 16. ... Kg8 (Alternatives: 16. ... g6 17. Nxe5 White is ahead, while after 16. ... Ng6 17. h5 wins back material) 17. Nxe5 with a winning position. **16. Bc2 Nxf3+ 17. Nxf3 e5 18. Nd4!** The last key move. If 18. Nxe5?? Qf2 mate. **18. ... Rf6** Not 18. ... Qxd4?? 19. Qh5+ Kg8 20. Bh7+ Kh8 21. Bg6+ Kg8 22. Qh7 mate. **19. Qh5+** White eventually converted this position. (Rodrigue-Lemieux – Xu, New York Winter Invitational IM D, 2023) **PUZZLE 6. 32. Bf2** The only move! **32. Bd6** "Tani" erred here, and lost after **32. ... Nb5** (32. ... c2?? 33. Bxa3) **33. Bb4 Bf8 34. Ba5 Nd4! 35. Bd3 c2 36. Bxc2** (36. Bd2 Ba3!) **36. ... Nxc2 32. ... c2 33. Bxc2 Nxc2 34. Bxa7** This endgame is equal. (Adewumi – Stearman, New York Winter Invitational GM B, 2023, analysis)