

WORLD BLITZ!

WEDNESDAY WORKOUT ■ JANUARY 04, 2023

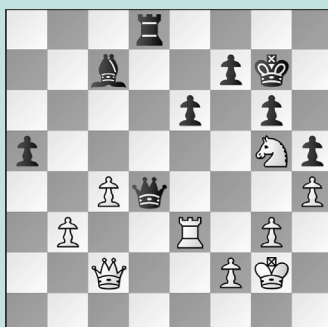
BY JJ LANG

PUZZLE 1.



WHITE TO MOVE

PUZZLE 2.



WHITE TO MOVE

PUZZLE 3.



WHITE TO MOVE

PUZZLE 4.



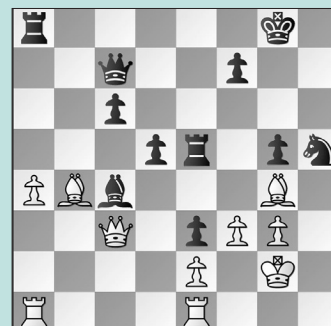
WHITE TO MOVE

PUZZLE 5.



WHITE TO MOVE

PUZZLE 6.



BLACK TO MOVE

SOLUTIONS

PUZZLE 1. 22. Rxf4 Bb7 After 22. ... exf4 Black has no compensation for the pawn: 23. Rxe8 Bb7 24. Rxa8 Bxa8 25. Be4. **23. Rf6** White is able to continue the attack. Black attempted to gain the d-pawn, but lost after **23. ... Bxd5 24. Bxg6 Nxc6 25. Qxd5** with a winning position. (Pourkashiyani – Paramzina, World Women's Blitz, 2022) **PUZZLE 2. 38. Rf3 Rd7** Black can defend the f7-square, but... **39. Rxf7+** not the e6-square! Black resigned in Nakamura – Grischuk, World Blitz, 2022. **PUZZLE 3. 20. Bxd6 21. Ne5! 0-0-0** Here 21. ... fxe5 22. Qg6+ is the point, while 21. ... Ke7 was no better after 22. Qg6. **22. Nf7** netting a clean Exchange. (Tang – Erigaisi,

World Blitz, 2022) **PUZZLE 4. 49. Bd7!** White would have been winning had she found this brilliant move, stopping both of Black's pawns in their tracks. Instead, she played 49. Kf2?? g4 and Black was now winning after 50. Bd3 g3+ 51. Ke3 g2 52. Kd2 Bh2 in Garifullina – Zatonskikh, World Women's Blitz, 2022. **49. ... Bg2** No different is 49. ... Bd5 50. Bg4. **50. Bg4** But that's not all! The bishop now re-routes to the f3-square, promoting the a-pawn in the process. **50. ... h3 51. Bf3 Bxf3+ 52. Kxf3 h2** Or 52. ... g4+ 53. Kxg4 h2 54. a8=Q **53. Kg2** and White wins. **PUZZLE 5.** White would have been winning the endgame after **37. Rxf8+** Instead, White missed the speed with which Black's knight triumphantly returns into the game: 37. Bh4?? Rxf5 38. Rxf5 (38. Qxf5 Qxf5 39. Rxf5

Nf7 Black consolidates) 38. ... Nf7! Black wins, as there is no way to preserve the central passers in Shankland – Caruana, World Blitz, 2022. **37. ... Rxf8 38. Rxf8+ Kxf8 39. Qa8+ Qe8 40. Qb7** White is winning. For instance, if Black tries **40. ... Bxe3** there is no answer to the simple **41. d7 Qd8 42. e6 Bg5** or 42. ... Bc5 43. Bc7 43. Bc7. **PUZZLE 6. 27. ... Nxc3** Black goes for an intuitive sacrifice. **28. Kxc3 d4!** Black missed this crucial intermezzo in Ghaem Maghami – Yoo, World Blitz, 2022. **29. Qa3!** White is in trouble if the queen does not coordinate with the bishop on the d6-square; 29. Qc1 Re4+ 30. Kh3 Kg7! shows the point of 28. ... d4! **29. ... c5!** White has run out of defensive resources. Note that White would have the last laugh after 29. ... Re4+?? 30. Bd6.