

THE K-12 GRADE CHAMPIONSHIPS

WEDNESDAY WORKOUT ■ DECEMBER 14, 2022

BY JJ LANG

PUZZLE 1.



BLACK TO MOVE

PUZZLE 2.



BLACK TO MOVE

PUZZLE 3.



BLACK TO MOVE

PUZZLE 4.



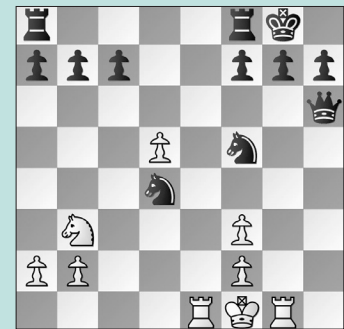
BLACK TO MOVE

PUZZLE 5.



WHITE TO MOVE

PUZZLE 6.



BLACK TO MOVE

SOLUTIONS

PUZZLE 1. 16. ... **Bxd5** Black must capture with the bishop, as otherwise there is no piece to support the ... e5-e4 push. 17. **exd5 e4** Black wins a piece. 18. **Be2 exf3** and Black went on to win. (Zhao – Overlingas, National K-12 Grade Championships, 2022). **PUZZLE 2.** 14. ... **c4!** The best way to defend the f7-pawn. (The mistaken 14. ... **h6??** was played in the game, losing.) The point is after 15. **dx4** Black can blockade the c-pawn with the tricky 15. ... **Bc5** as now Black can freeze the pawn on c4 by pushing ... b5-b4. White soon won in Jani – Wong Okyere, National K-12 Grade Championships, 2022. **PUZZLE 3.** 46. ... **dx5+** A key deflection! 47. **Kxc5 Be4!** 48. **Bf3** In the

game, White played 48. **Bg4** and lost after 48. ... **f5 49. Kd4 Kd6 50. Ke3 Kxd5. 48. ... Bxf3 49. gxf3 f5** Black creates an outside passed pawn, and White's passed d-pawn is toothless. Black soon won in Nasta – Mundayat, National K-12 Grade Championships, 2022. **PUZZLE 4.** 18. ... **e4!** Black pressures the loose knight on c3. 19. **f4 Bb5!** and points out that the a1-rook is a liability, as well. 20. **Ra3 Bxc4 21. bxc4 Rxc4** White managed to limit his damage to a pawn, and recovered eventually to win the game on the 42nd move. (Padhye – Krishna, National K-12 Grade Championships, 2022). **PUZZLE 5.** 23. **Nxc4!** White does not need to worry about the e1-rook, as his attack is too powerful. 23. ... **dx4** Note that 23. ... **Bxe1 24. Nd6 Rf8**

25. **Qxe1** would net two bishops for the rook as well as a strong initiative. 24. **Rg3 f5** Of course 24. ... **Bxe1 25. Bxh6** is unstoppable as well. 25. **Bxh6** and Black resigned a few moves later. (Huston – Hua, National K-12 Grade Championships, 2022). **PUZZLE 6.** 26. ... **Qh3+** This leads to a spectacular mate. 26. ... **Nxf3** was played in the game, which is certainly enough to win. After some imprecise moves, White soon was mated: 27. **Rd1 Rfe8 28. Rg4 Qh1+ 29. Rg1 Nh2 mate 27. Rg2 Qh1+ 28. Rg1 Ng3+!** A very nice move to find. 29. **fxg3 Qxf3 mate.** (Chan-Schlauraff – Jani, National K-12 Grade Championships, 2022). **NOTE:** You can also solve these puzzles at our Lichess study: lichess.org/study/MZqJcXU