



US CHESS

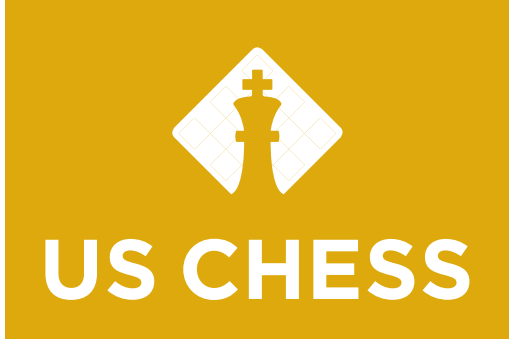
MEMPHIS, TN • April 8-10, 2022

VALLEY
High School

CHAMPIONSHIP

(K-12)

“
What is your favorite
chess book?
”



*Zurich International Tournament
1953 by David Bronstein*

US CHESS EXECUTIVE DIRECTOR
Carol B. Meyer

*The Amateur's Mind
by Jeremy Silman*

DIRECTOR OF EVENTS
Boyd M. Reed

ASSISTANT DIRECTOR OF EVENTS
Pete Karagianis

*Winning Chess
Tactics by Yasser
Seriawan*

CHIEF TD
NTD Jeff Wiewel

PAIRING CHIEFS
William Buklis
John Simons

Charles Hatherill

FLOOR CHIEF
Brian Yang

DGT OPERATOR
Samuel Shoykhet

*My 60
Memorable Games
by Bobby Fischer*

*Everyone's First Chess Workbook
by FM Peter Giannatos*

SECTION CHIEFS
Kevin Hyde
Steve Immitt
Glenn Panner

CHESS CONTROL MANAGER
Michelle Martinez

*John Nunn's Chess
Puzzle Book*

Jeff Aldrich
Larry Bell
Roy-Allen Bumpers
Zak Cancio
Brian Costella
Lee Lafrese
Josh Lawson
Beenmati McGreen

FLOOR TDS
Maya Myers
Amy Nunn
Usha Raghavan
LeRoy Sims
David P. Sye
Eric Vigil
Larry Weston
Danial Wilson

CHESS CONTROL STAFF
David Hater
Ben Johnson
Korey Kormick

GUEST GM
GM Benjamin Finegold

ANALYSTS
WGM Sabina-Francesca Foisor
FM Gauri Shankar

*COOL Chess by IM
Paul Motwani*

BACKROOM CHIEF
Maret Thorpe

SCHOLASTIC COUNCIL REPRESENTATIVE
John D. Rockefeller V

*Great Moves: Learning
Chess Through History by
Sunil Weeramantry*

*Everyone's First Chess
Workbook by Peter Giannatos*

PROGRAM BOOK STAFF

**Senior Director of Strategic
Communication**
Dan Lucas

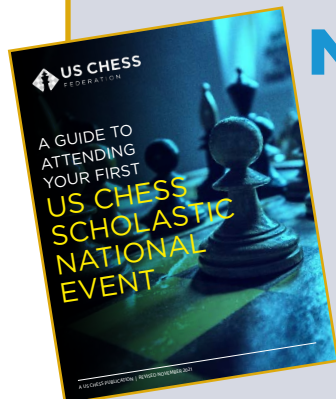
Art Director
Natasha Roberts

Publications Editor
Melinda Matthews

Graphics Assistant
Nicole Esaltare



*Searching for
Bobby Fischer by
Fred Waitzkin*



NEW TO NATIONAL EVENTS?

National scholastic championships can be overwhelming for first-timers. If you, your child, or your team are attending a US Chess national event for the first time, scan the QR code at left to learn how to have a positive tournament experience.



US CHESS TRUST

PROVIDES FREE SETS, BOARDS AND US CHESS MEMBERSHIPS TO AT-RISK SCHOOLKIDS!



USCT also supports:

- Scholar Chess Player Awards
- GM Denker Tournament of HS Champs
- WIM Haring National Girls Champs
- Barber Tournament of MS Champs
- U.S. Blind Championship
- Pan-American Intercollegiate Team
- Final Four of College Chess
- World Chess Hall of Fame
- And many other programs

WGM and IM Carissa Yip

2021 US Chess Trust Samford Fellow

2021 US Women's Champion!

For more information on the good work of the US Chess Trust, please go to www.uschesstrust.org. Or contact us at info@uschesstrust.org.

The Trust is a separate 501(c)(3) organization operating independently of US Chess.



US CHESSTRUST

GIRLS CLUB ROOM

All female players, along with their families and coaches, are invited to come to the Girls Club Room!

Room 101
Friday -Sunday

***Masks required**



SPECIAL GUESTS:
WGM Jennifer Shahade
WFM Devina Devagharan

Expert Epiphany Peters
WIM Luciana Mendoza
Streamer Karen Boyd

Friday, April 8

3:00 P.M. - **Welcome and Q+A**

4:00 P.M. - **Tandem Simul or Group Game***

Saturday, April 9

All day - **Game analysis with Devina & Epiphany**

12:00 P.M. - **Teen meet-up and pizza outing hosted by Teen Club leader Laurel A.**

4:00 P.M. - **Jen on her new book *Chess Queens* (signing and photo ops available)****

5:00 P.M. - **Content Roundtable: Devina, Luciana, Epiphany, Karen, and Jen on Streaming, Tech, and Tools**

Sunday, April 10

10:00 A.M. - **Game Analysis, Bughouse, and Raffles!**

***Format based on interest**

***All genders welcome for Saturday afternoon events on *Chess Queens* and chess content.**

Please check onsite and @USChessWomen on Twitter for any schedule updates.

Welcome

...to the 2022 National High School (K-12) Championship!

US Chess is pleased to be hosting the 2022 National High School (K-12) Championship in Memphis, Tennessee. Considered the home of the blues and the birthplace of rock 'n' roll, we hope you'll find time to explore the city that *Time* magazine named as a 2021 World's Greatest Place. Thank you for attending and for supporting our national scholastic events!

COVID-19 Procedural Changes

Because of the challenges presented by COVID-19, US Chess has implemented special requirements and is providing safety-related assistance for this event. Find details at the tournament website: <http://www.uschess.org/tournaments/2022/hs/> or by scanning the QR code below. US Chess appreciates your help in promoting this safer environment!

Latest updates

Use your smart phone to scan here for the latest updates!



INFORMATION

PAIRINGS/
RESULTS



TOURNAMENT STAFF	03
WELCOME LETTERS.....	06
WHAT'S ON	10
Tournament highlights	
SPECIAL GUESTS	12
TOURNAMENT SCHEDULE	14
TOURNAMENT RULES	17
POLICIES & PROCEDURES	20
RECENT WINNERS	24
FUTURE EVENTS.....	31

Share with us!

We want to know all about your tournament experience. Share your stories and photos on social media using **#HSChessChamps**.



FROM THE DIRECTOR OF EVENTS

WELCOME TO THE 2022 NATIONAL

It's my privilege to be part of the team that will make this a quality experience for all players, parents, coaches, and spectators.

We are happy to be in the recently-renovated Renasant Convention Center. This facility is large, but easy to get around, thanks to the efficient two-level layout. It's also just across the street from the Sheraton Memphis Downtown, which is serving as our host hotel for this championship.

US Chess is taking all reasonable steps to help ensure the safety and well-being of our players, parents, and coaches. Anyone wearing an official US Chess badge at this event — even the vendors — will be fully vaccinated against COVID-19. We will be disinfecting all pieces between each round. We are providing hand sanitizer for every player and masks for attendees. Masks are required to be worn, covering the nose and mouth, during any round of this event, and in all US Chess meeting spaces. We are reducing the number of public postings and encouraging all players and parents to check pairings and standings online. Similar measures were employed successfully at the 2021 U.S. Open and 2021 National K-12 Grades, and reflect the classroom mitigation practices currently employed by many school districts around the country.

We've assembled a first-rate team of directors, led by NTD Jeff Wiewel (chief tournament director), NTD Brian Yang (floor chief), and NTD Maret Thorpe (backroom chief). They will ensure that the tournament is conducted with full observance of all US Chess rules. Michelle Martinez and her staff at Chess Control will be happy to assist with any questions you have.

GM Benjamin Finegold is our guest grandmaster. Ben will be conducting a simultaneous exhibition, two lectures, and three "take-on-all-comers" blitz sessions. The lectures and blitz sessions are free for players to attend!

We will be broadcasting live analysis of the top championship section boards on the US Chess Twitch feed. Our analysts are FM Gauri Shankar and WGM Sabina-Francesca Foisor. This live analysis will occur in rounds five through seven. Please check the schedule of events in this newsletter for the exact time. We welcome you to watch the stream on Twitch at <http://www.twitch.tv/uschess>. When you see Pete Karagianis, Assistant Director of Events, moving around the site, send all compliments and congratulations his way, as he is the driving force behind our streaming operations.

US Chess wants you to have fun and really enjoy yourselves at this event. Of course, we also want you to do so safely. Be aware of your surroundings, and keep in mind that you're sharing space with several thousand people this weekend. Remember, safety is no accident.

We are also offering informational lectures this weekend. The lectures will be on various topics of importance to the scholastic chess community. These lectures are free and highly informational. We encourage you to attend at least one of them. Please check the schedule of events for the subjects, times and location.

Under the strategic direction of our Executive Director, Carol Meyer, we are constantly looking for ways to improve our national events. I welcome any ideas or comments you have in that regard.

Please accept my best wishes for an enjoyable and successful tournament.

Sincerely,



Boyd M. Reed
Director of Events

FROM THE EXECUTIVE DIRECTOR

HIGH SCHOOL (K-12) CHAMPIONSHIP



Dear Friends in Chess,

Welcome to Memphis! We are thrilled for the return of scholastic over-the-board chess with the 2022 National High School (K-12) Championship! The return of national scholastic play is something to celebrate and enjoy.

The Scholastic Spring Nationals will look a little different this year. Not surprisingly, the COVID-19 pandemic has made us hyper-focused on your safety. We are using several tools to reduce the spread of viruses by requiring that all players and accompanying persons wear face masks in our contracted spaces. While I will miss seeing the smiles of our players when sharing their joy after winning a game, the mask requirement is a key element of our strategy in promoting a safe environment for all. In addition, we are requiring all US Chess employees working this event, including contractors and volunteers, to be fully vaccinated against COVID-19. There are no exceptions to this policy. Finally, we have added electrostatic sprayers (think *Ghostbusters!*) to spray every board setting and table space with

disinfecting spray before every round. These measures taken together with other common-sense practices such as hand washing will increase your safety at the event.

The recently updated CDC mask guidance applies to local communities and local virus transmission rates. For US Chess, national events are a melting pot of players from communities all over the country — this is not a tournament at your local school where the players are from the same community. At the time I write this note, some communities continue showing high rates of transmission (including my own here in Raleigh, North Carolina). Almost every player in this tournament will be seated next to and across from someone they do not know. Therefore, to protect players, families, coaches, and staff, US Chess decided to keep the safety measures in place through this year's spring national scholastic events.

We are doing our part to minimize the risk to you, players, and the staff working the event. We request your cooperation in complying with the mask rule so that everyone can have a fun and safe chess event. If you have questions about these mitigation efforts, please visit Chess Control for more information. Or if you or your player becomes sick during or after the event, please email events@uschess.org to let us know. We will protect your identity but will notify others who attended the event that there could have been exposure.

Thank you for being part of our return to over-the-board scholastic chess. We appreciate your support for your chess player, for US Chess, and for being part of our community. If you see me around during the tournament, please stop me and say hello. I hope you have a great tournament.

Warmest regards,

A handwritten signature in white ink that reads "Carol B. Meyer".

Carol B. Meyer
US Chess Executive Director

WELCOME TO ME



BILL LEE
Tennessee State Governor

Dear Friends,

On behalf of the State of Tennessee, it is my pleasure to welcome chess players and supporters from across the United States to Memphis for the 2022 National High School (K-12) Championship.

Chess requires concentration, foresight, and carefully executed moves. As governor, I commend all the participants for your dedication to compete for national championship titles and encourage you to continue your mastery of the sport. I would also like to recognize the US Chess Federation for organizing this great competition. Thank you for your efforts to promote an interest in chess among the younger generation.

Again, welcome to the 2022 National High School (K-12) Championship. Please accept my best wishes for a successful competition.

Warmest regards,
Bill Lee

FUN FACTS ABOUT MEMPHIS



Memphis Parks manages **150** sites that comprise more than **5,600 acres**.

Home of the blues and birthplace of rock 'n' roll, Memphis is filled with **musical landmarks** such as **Graceland** and **Sun Studios**.



600 bikes and **60 stations** connect Downtown, Midtown, South Memphis, and Orange Mound through Memphis' shared bike system, Explore Bike Share.

Popular sites include Chucalissa, the National Civil Rights Museum, and the Victorian Village area.



MEMPHIS, TENNESSEE

TAKE OUR NATIONAL EVENTS SURVEY

US Chess appreciates your membership, sponsorship, and attendance at our national events. Please help us improve the service we provide at our national championships by completing this tournament survey. Visit <https://www.surveymonkey.com/r/2022HighSchool> or scan the QR code on the right.



A 2018 pilot program opened up the **Mississippi River** to downtown kayakers.

With more than **100** barbecue restaurants, Memphis has been dubbed the **pork barbecue capital of the world.**



NEED A BITE?

Searching out quick and convenient meals can be challenging at national scholastic tournaments. Fortunately, you don't have to go far for dining and drink options close to the convention center. Visit <https://www.renasantconventioncenter.com/attend-an-event/convention-center-restaurants/> or scan the QR code on the right.



What's On

National High School (K-12) Championship Tournament highlights



SCHOLASTIC MEETING

Join **JOHN D. ROCKEFELLER V** in Room 108 for the Scholastic Council meeting at 2:15 p.m. Saturday, April 9, to learn more about our scholastic programs.

SATURDAY at 2:15PM in **ROOM 108**



EDUCATIONAL SEMINARS

New to scholastic tournaments or just want to learn more about them? Then join us for "My First Tournament." Also check out "The Benefits of Chess as an Educational Tool" or "Preparing for International Youth Events" to broaden your knowledge about chess' impact and reach. See schedule on page 14 for times and locations.

SEE SCHEDULE at **PAGE 14**



**GUEST
GM
2022!**

MEET GM FINEGOLD!

We're offering **six exciting opportunities** to interact with **GUEST GM BENJAMIN FINEGOLD!**

On Friday, April 8, GM Ben Finegold will kick off his appearances with a simul exhibition at 9:00 a.m. in Southwest Hall. He'll present two lectures: the first at 11:30 a.m., on Saturday, April 9, and the second on Sunday, April 10, at 10:00 a.m., both in Room 108. And you'll have three chances to challenge him in "All Comers" blitz: Friday, Saturday, and Sunday at 2:30 p.m., in Southwest Hall.

SIMUL on **FRIDAY** at **9:00AM** in **SOUTHWEST HALL**
LECTURES on **SAT** at **11:30AM** and **SUN** at **10:00AM** in **ROOM 108**
BLITZ on **FRI, SAT, and SUN** at **2:30PM** in **SOUTHWEST HALL**

FRIENDS & FAMILY



Why should tournament play be limited to the kids? Get your game on and join the Friends and Family tournament on Saturday, April 9, in Room 205 beginning at 10:30 a.m. Visit Chess Control to sign up, and see the schedule on page 14 for round times.

SATURDAY beginning at **10:30AM** in **ROOM 205**



LIVESTREAM MANIA

Hosts **WGM SABINA-FRANCESCA FOISOR** and **FM GAURI SHANKAR** livestream the decisive final rounds at 7:00 p.m. Saturday, April 9, and at 9:00 a.m. and 2:00 p.m. Sunday, April 10. Tune in at twitch.tv/uschess to follow the action!

SATURDAY at 7:00PM
SUNDAY at 9:00AM & 2:00PM
 on [TWITCH.TV/USCHESS](https://Twitch.tv/USCHESS)



CHESS SCHOLARS

The Scholar Chess Player Awards provide \$1,500 scholarships for outstanding high school students who promote a positive image of chess. This year's recipients will be announced prior to the start of round six.

SUNDAY at 8:50AM in
EAST HALL



SKITTLES ROOM

For pickup play, post-mortems, and making new friends, visit the skittles room in Southwest Hall. Check the schedule onsite for times.

SEE ONSITE SCHEDULE FOR TIMES in **SOUTHWEST HALL**



GIRLS CLUB

The popular Girls Club room is located in Room 101 and, as usual, will be jam-packed with events and special guests. Don't miss it! See page 4 for the complete schedule.

SEE SCHEDULE FOR TIMES in **ROOM 101**



BUGHOUSE & BLITZ

No scholastic event would be complete without the popular bughouse and blitz tournaments. Bughouse begins on Thursday, April 7, at 11:00 a.m., and blitz takes off that same evening at 5:00 p.m., both in East Hall. Be sure to sign up at least a half hour prior at Chess Control.

BUGHOUSE on **THURSDAY** at 11:00AM
BLITZ on **THURSDAY** at 5:00PM
 both in **EAST HALL**

NEED ASSISTANCE? VISIT CHESS CONTROL

Chess Control is the heart of your tournament experience. If you have questions, comments, or concerns, stop by East Hall Foyer and talk to our friendly staff.

Located at **EAST HALL FOYER**

Special Guests

Meet our distinguished visitors

LIVESTREAM HOSTS



WGM SABINA-FRANCESCA FOISOR

WGM SABINA-FRANCESCA FOISOR: 2017 U.S. Women's Champion

Sabina is a Romanian-American chess player who has earned numerous national and international championship titles. After coming to the United States to study on a full scholarship, Sabina joined Team USA for both the Women's Olympiad (2010-2018) and the Women's World Team Championships (2013-2019). She won the U.S. Women's Championship in 2017. Find her on Twitter, Instagram, and Twitch: [@sabinafoisor](#).



FM GAURI SHANKAR

FM GAURI SHANKAR: Chicago-area coach and streamer

Gauri, a 29 year old FIDE Master, currently works full time as a chess coach in Chicago. His after-school chess programs have introduced chess to over a thousand kids in the Chicago area. During his scholastic years, Gauri won the 2005 U.S. Junior U-15 Open and the 2006 National K-12 Quick Chess Championship. He holds seven international master norms and is looking to complete his international master title. In his spare time, Gauri enjoys reading, playing the piano, singing, traveling, and streaming chess on Twitch, where he currently has amassed a following of over 22,000 viewers.

GUEST GRANDMASTER

BEN FINEGOLD

Popular streamer, lecturer, teacher

Known as the "People's Grandmaster," GM Ben Finegold knew he wanted to play chess professionally by his mid-teens and followed that path as soon as he graduated from high school. In 1993, GM Finegold received the Frank P. Samford, Jr. Chess Fellowship, a prestigious award that identifies and assists the best young American chess masters under the age of 26. He secured his first grandmaster norm at the 2002 World Open in Philadelphia, where he finished in an eight-way tie for first. In 2009, after his 40th birthday, GM Finegold earned his final grandmaster norm at the SPICE Cup in Lubbock, Texas. Finegold, a popular lecturer and teacher, streams chess five to six times a week, most often on Twitch under the handle "GMBenjaminFinegold," an account that has attracted over 100,000 followers.



SCHOLASTIC COUNCIL REP JOHN D. ROCKEFELLER V

Tournament director, coach, active committee member

As Scholastic Director of Maryland Chess since 2010, John D. Rockefeller V has organized and directed nearly 200 tournaments. He is a senior tournament director and FIDE national arbiter. He serves US Chess as vice chair of the Scholastic Council, vice chair of the Development Committee, and a member of the National State Invitationals Committee — which oversees the Irwin (Senior), Denker (HS), Haring (Girls), Barber (MS), and Rockefeller (ES) national championships for state champions at the U.S. Open. At the age of 38, he played chess again for the first time in 26 years and barely remembered how the pieces moved. A few months later he started coaching the chess club at his daughters' school, culminating in 10 years of coaching. He can empathize with first-time chess parents because he will never forget staring at wallcharts, pairings charts, and standings charts for the first time and feeling utterly clueless.

GIRLS CLUB SPECIAL GUESTS

Our Girls Club will be hosting special guests WGM Jennifer Shahade, WFM Devina Devagharan, and Epiphany Peters, a US Chess expert. WIM Luciana Morales Mendoza and streamer Karen Boyd will join the fun on Saturday. Be sure to check out page 4 for the schedule and times.

WGM JENNIFER SHAHADE: Women's Program Director

US Chess Women's Program Director Jennifer Shahade is a two-time U.S. Women's champion and the first female to win the U.S. Junior Open. She's the award-winning host of two podcasts: Ladies Knight and the GRID. She's also the author of the newly released *Chess Queens: The True Story of a Chess Champion and the Greatest Female Players of all Time*.



WFM DEVINA DEVAGHARAN: Player, streamer, trainer

WFM Devina Devagharan began playing chess around age eight and soon was competing in both national and international tournaments. She served as the girls' representative for her age group at the 2010 and 2011 World Youth Chess Championships and took first place (U14 Girls) at the 2014 North American Youth Chess Championships. Devina loves sports and writing, and one of her passions is supporting mental health. Find out more about Devina: <https://new.uschess.org/news/chess-underground-28-wfm-devina-devagharan>



EPIPHANY PETERS: Chess and Twitch expert

Epiphany has played chess for nearly 20 years and is currently pursuing the national master title. During the pandemic, she began teaching chess full time and also discovered the world of Twitch streaming, where she has made friends and connected with people around the world. When not engaged in chess, Epiphany can be found playing the piano or exploring the outdoors. Learn more about Epiphany: <https://new.uschess.org/news/chess-underground-31-epiphany-peters>



WGM JENNIFER SHAHADE



WFM DEVINA DEVAGHARAN



EPIPHANY PETERS

Thursday

Chess Control	8:00 a.m. - 8:00 p.m.	East Hall Foyer
Bughouse Tournament	11:00 a.m. - 2:00 p.m.	East Hall
Blitz Tournament	5:00 p.m. - 9:00 p.m.	East Hall
T-Shirts, Other Vendors	Thursday-Sunday*	Southwest Hall

Friday

Girls Club	Friday- Sunday*	Room 101
Chessable	Friday-Sunday*	River View Lobby
Skittles	8:00 a.m. - 8:00 p.m.	Southwest Hall
Chess Control	8:00 a.m. - 8:00 p.m.	East Hall Foyer
Simultaneous Exhibition - GM Benjamin Finegold	9:00 a.m. - 11:00 a.m.	Southwest Hall
My First Tournament Seminar	9:30 a.m. - 10:30 a.m.	Room 108
Bookstore	11:00 a.m. - 8:00 p.m.	Room 102
Opening Ceremony	12:45 p.m. - 1:00 p.m.	East Hall
ROUND 1	1:00 p.m. - 5:10 p.m.	East Hall
"All Comers" Blitz - GM Benjamin Finegold	2:30 p.m. - 4:30 p.m.	Southwest Hall
ROUND 2	7:00 p.m. - 11:10 p.m.	East Hall

* see posted hours on site

Saturday

Skittles	8:00 a.m. - 11:00 p.m.	Southwest Hall
Chess Control	8:00 a.m. - 8:00 p.m.	East Hall Foyer
Bookstore	8:00 a.m. - 8:00 p.m.	Room 102
Presentation of Top 5 Blitz Individual Winners	8:50 a.m. - 9:00 a.m.	East Hall
ROUND 3	9:00 a.m. - 1:10 p.m.	East Hall
The Benefit of Chess as an Educational Tool Seminar	10:00 a.m. - 11:00 a.m.	Room 108
ROUND 1 FRIENDS AND FAMILY	10:30 a.m. - 11:40 a.m.	Room 205
Grandmaster Lecture - GM Benjamin Finegold	11:30 a.m. - 12:30 p.m.	Room 108
ROUND 2 FRIENDS AND FAMILY	12:30 p.m. - 1:40 p.m.	Room 205
Presentation of Top 5 Blitz Team Winners	1:50 p.m. - 2:00 p.m.	East Hall
ROUND 4	2:00 p.m. - 6:10 p.m.	East Hall
Scholastic Meeting	2:15 p.m. - 3:15 p.m.	Room 108
"All Comers" Blitz - GM Benjamin Finegold	2:30 p.m. - 4:30 p.m.	Southwest Hall
ROUND 3 FRIENDS AND FAMILY	2:30 p.m. - 3:40 p.m.	Room 205
ROUND 4 FRIENDS AND FAMILY	4:30 p.m. - 5:40 p.m.	Room 205
Presentation of Top 5 Bughouse Teams	6:50 p.m. - 7:00 p.m.	East Hall
ROUND 5	7:00 p.m. - 11:10 p.m.	East Hall
Round 5 - Livestream of top boards, K-12 Championship	7:00 p.m. - 11:10 p.m.	<i>twitch.tv/uschess</i>

Sunday

Skittles	8:00 a.m. - 11:00 p.m.	Southwest Hall
Chess Control	8:00 a.m. - 2:30 p.m.	East Hall Foyer
Bookstore	8:00 a.m. - 6:00 p.m.	Room 102
Presentation of Scholar-Chessplayer Awards	8:50 a.m. - 9:00 a.m.	East Hall
ROUND 6	9:00 a.m. - 1:10 p.m.	East Hall
Round 6 - Livestream of top boards, K-12 Championship	9:00 a.m. - 1:10 p.m.	twitch.tv/uschess
Grandmaster Lecture - GM Benjamin Finegold	10:00 a.m. - 11:00 a.m.	Room 108
Preparing for International Youth Events Seminar	11:30 a.m. - 12:30 p.m.	Room 108
ROUND 7	2:00 p.m. - 6:10 p.m.	East Hall
Round 7, Livestream of top boards - K-12 Championship	2:00 p.m. - 6:10 p.m.	twitch.tv/uschess
"All Comers" Blitz - GM Benjamin Finegold	2:30 p.m. - 4:30 p.m.	Southwest Hall

*End times are approximate

Awards Ceremony: approximately 7:00 p.m. at East Hall

BOOKSTORE

Be sure to visit the bookstore while you're here! Located in Room 102, the bookstore opens on Friday morning. See the schedule for times.

OPENING FRIDAY in ROOM 102

2022 National High School (K-12) Championships – Tournament Rules

Note: *Posted procedures at the site supersede these published procedures.*

The 2022 National High School (K-12) Chess Championships are sanctioned by the United States Chess Federation and conducted by its rules. The *7th Edition of the U.S. Chess Federation's Official Rules of Chess*, as amended, and the US Chess National Scholastic Chess Tournament Regulations are the basis for all the rules and regulations. We include the following rules here to answer players, parents and coaches most frequently-asked questions, to highlight changes that are different than the rule book, and to remind players of useful information.

Tournament Directors (TDs)

TDs will be on the tournament floor at all times to assist players in the event of any problem or question. To summon a director, raise your hand and keep it in the air until a TD comes to assist you. Remember that a TD will generally not interfere with your game. ***It is up to you to make a claim.*** If you think a TD has ruled incorrectly concerning your game, you should ask for another TD and make an appeal immediately.

Clocks and Time Controls

The time control is game in 120 minutes with 5-second delay (G/120, d5). Digital clocks with delay capability must have the 5-second delay set. Analog clocks should be set at 4:00. The game must be either won or drawn before the flag falls at 6:00. The player whose flag falls first loses the game unless the opponent has insufficient mating material or both flags have fallen. In either of those exceptions, the game is drawn. ***The TD will tell you which way your clock should face.*** A digital clock with time delay set is preferable to any other clock. Therefore, if White has such a clock available and Black does not, White's clock should be used. If a time delay clock is used, it must be set with the time delay in force from move one. When using the time delay feature, set the clocks at 120 minutes (2 hours) with a five-second "delay," or "Bronstein."

Start of the Game

White's clock must be started as soon as the TD announces that the round has begun. Black's clock may not be started before White has made a move. If a clock is not available at the start of a round, any elapsed time before one becomes available will be evenly split between players. If both players are late for the start of a round, the first to arrive must split the elapsed time before starting the clock.

Recording Moves

Each player is required to record the moves. Each player must maintain a scoresheet that is complete up to at least their last move before making another move. Neither player is required to keep score if either player has less than five minutes at the end of the game. This applies to all players in this tournament, regardless of age or grade level.

Electronic Devices

Unless approved in advance, in writing, by the tournament organizer, no ERDs are permitted at this event, per paragraph 19.1.6 of the US Chess Scholastic Regulations. Those players granted advance written approval to use an ERD must, at all times, play the intended move on the board first, before recording it on the device. ***Further, the ERD must be kept on the table throughout the game; players may not take an ERD outside the tournament hall while a game is in progress. Also, no electronic devices, may be taken to the restrooms.*** Failure to follow these procedures may result in penalties if observed by a TD, even without a claim from the opponent.

Electronic Recording Devices (ERD)

ERDs are not permitted at this tournament, unless you have received prior written approval from the Director of Events to use one. Those players using an approved ERD must always play the intended move on the board first, before recording it on the device. ***Further, the ERD must be kept on the table throughout the game; players may not take an ERD outside the tournament hall while a game is in progress. Also, no electronic devices may be taken to the restrooms.*** Failure to follow these procedures may result in penalties, if observed by a TD, even without a claim from the opponent.

Touch-Move

If you intentionally touch a piece when it is your turn, that piece must be moved if you can do so legally. If you intentionally touch an opponent's piece when it is your turn to move, the opponent's piece must be captured if you can do so legally. You must clearly say "I adjust" or "j'adoube" before touching a piece if you want to adjust that piece on the board. You may do so only when it is your turn. If you accidentally release a piece on an unintended but legal square, you must leave it on that square. You may not touch any pieces on the board when it is not your turn.

Illegal Moves

If a player discovers that one of his/her or the opponent's last 10 moves was illegal, the player should summon a tournament director immediately. The TD can reinstate the position to what it was before the illegal move, and the game shall continue by applying the touch-move rule to the move replacing the illegal move. Clocks will not be reset. If neither player has used one hour, there will be no time penalty.

TOURNAMENT RULES

assessed for an illegal move. If either player has used one hour, then any illegal move will result in two minutes being added to the opponent of the player making the illegal move. A player must raise his/her hand and claim an illegal move. The TD will not do so; neither may parents, coaches, nor other spectators.

Check

Announcing check is not necessary. It is the responsibility of the opponent to notice the check. A player who does not notice the check may suffer serious consequences (see the touch-move rule).

Time Forfeits

Only the players involved in a game may claim a Time Forfeit in that game. No parent, coach, spectator, other players or TD may make such a claim or bring the fall of a flag to the attention of the players. A player may claim a Time Forfeit only if he/she stops the clocks before the claimant's own time runs out. If both flags are down, the game is a draw.

Late Arrivals

A player who is more than one hour late for a scheduled round loses the game by forfeit and will not be paired for the next round unless reinstated by the Chief TD. The hour is measured from when the round was started. Request for reinstatement, if desired, must be made by the player, coach or parent, to the Chief Tournament Director or Floor Chief.

Draws

If you want to offer a draw to your opponent, you should do so after you make a move but before you start your opponent's clock. Your opponent may decline the draw by saying so or by moving a piece. A draw offer is valid, and may not be retracted, until it is accepted or declined by your opponent. If both players agree to a draw, then the game is over regardless of previous checkmate, stalemate or illegal positions. A reasonably complete and accurate scoresheet is required to claim a draw by triple occurrence of position or under the 50-move rule. If such a claim is found to be incorrect, two minutes will be added to the opponent's remaining time.

Claims of Insufficient Losing Chances

No claim of insufficient losing chances can be made if time delay is already in force on the clock being used. However, if the game clock cannot be set in delay mode, a player on the move who has no more than two minutes left may stop the clock and ask the TD to declare the game a draw on the grounds that the player has insufficient losing chances. Such a claim is also a draw offer. The TD may, at his discretion, place a digital clock, set with time-delay at five seconds, on the game. If this is done, the claimant gets half of his

remaining time up to but not exceeding one minute, while the opponent's time is not adjusted and the game continues until a result is achieved. If the claim is obviously correct, the TD should grant the draw. If the claim is obviously incorrect, the TD may deduct up to one minute from the claimant's time and the game should continue. If the claim is unclear, but no time-delay clock is available to insert on the game, the TD may reserve a decision while he watches the continuation of the game or may ask the players to re-claim after restarting the game.

Analysis of Games

Players may not analyze their games in the tournament room. Analysis should be conducted in the skittles area or elsewhere.

Reporting Results

Immediately upon completion of the game, the players should carefully complete and sign the results sheet at their board, without disturbing the position, and hold the results sheet up in the air until a TD comes to get it. **Players should not sign the results sheet until the correct result has been recorded! Both players must remain at their board until a TD takes the results sheet.** Only after the TD has done so should both players set up the pieces and leave the playing area.

Pairings

The WinTD pairing program will be used for this tournament. Players will generally be paired with other players who have the same score each round. Players should not be assigned the same color three times in a row unless there is no other way to pair the score group or unless necessary to equalize colors. Every reasonable effort will be made to avoid pairing players from the same school together. One exception is the last round when more than half of the players in the top group are from the same school. In this case, some might be paired together. You can find other situations in Paragraph 18.1 of the Scholastic Regulations. If you believe there is a pairing error, report it to a TD immediately! Once the round starts, it will probably be too late to make any changes. Parents and coaches should check the correctness of the wallcharts every round. Errors in scores reported after two or more rounds would most likely not be corrected.

Conduct of Players

Please try to keep as quiet as possible on the tournament floor so that you do not disturb other players. **You may not speak to anyone while your game is in progress unless you have asked a TD to be present.** If there is a problem of any kind during your game, call a TD immediately. If you wait until after your game is over, the result probably cannot be changed even if your claim was correct. Be careful what you

sign — once you have signed your result sheet, and agreed to the result on it, it is very difficult to change later on. You may not consult notes, chess books, computers, or other materials during the game. You may not bring food or soda into the tournament hall at any time. If you need to go to the bathroom while your game is in progress, you must use the bathrooms designated for tournament players. You do not need to ask permission from the TD for this. You may not leave the tournament room during your game other than to go to the restroom if it is outside the tournament room. Exceptions can be made only if you have permission and are accompanied by a TD.

Half-Point Bye

One half-point bye will be available during any round, if requested by 11am on Friday, the first day of the event. On-site registrations after 11am will receive a ½-point bye for the first round unless otherwise determined by the Chief TD. The Chief TD may grant a ½-point bye during any round, even after the cut-off, for unusual circumstances.

Interference

No interference in any game by spectators or other players will be tolerated. Potential penalties include expulsion from the tournament. Only the player involved may point out irregularities. This should be done by raising your hand to summon a TD.

Other Rules

This is an individual tournament with team scoring. In each section, a team may have as many players as desired, but **only the top four scores count for team results and tiebreaks**. A school must have at least two players in a section in order to be eligible for team awards in that section. Players and coaches/parents are responsible for confirming the accuracy of any and all player information.

Penalties

Penalties for rules violations are at the discretion of the TD and may vary from warnings and time penalties to forfeitures and expulsion from the tournament.

Cell Phones

Cell phone use is not permitted in the tournament hall by the players. **CELL PHONES MUST BE TURNED OFF IN THE PLAYING HALLS**. If a cell phone rings, a player will be assessed a time penalty on the first offense, and loss of game declared for each repeat offense during the tournament. A player using his cell phone for calling, answering a call, sending a text message, or reading text messages while the game is in progress may be forfeited instantly. **We strongly encourage players to leave their cell phones with their parents or coaches**. If a player brings a cell phone into the Playing

Hall, it must be turned off and stowed in a back-pack, purse or chess bag for the duration of the game. Once the game begins, the cell phone must remain stowed away. Until the game ends, the player may not carry the cell phone in your hand, pocket or anywhere else. **The player must not take it to the bathroom or anywhere else**. We refer players, parents and coaches to Section 21.5 of the Scholastic Regulations.

What Award Did I Win?

In cases of ties, individual awards cannot be split. We will use tiebreaks to award both individual medals and team trophies.

Tie-Breaks

Below is the tiebreak order in which individual ties are broken in this event and an explanation of how to calculate the tiebreak total.

Individual ties for medals are broken by Modified Median, Median, Solkoff, Sonnenborn-Berger, Cumulative, and coin toss, in that order. Players can win only one individual medal. Place medals take precedence over all other medals awards. The team tie-breaks are Total Individual Median, Total Solkoff, Total Sonnenborn-Berger, Total Cumulative, and Coin Flip in that order.

1. Modified Median: First, the Median system sums the scores of the opponents of the player in the tie and then subtracts the high and low score. The Modified Median system for players with a plus score only removes the lowest opponent's score. For an even score, the highest and lowest opponent scores are removed, while the highest score is removed for those players with a minus score. Please note that opponents' scores are adjusted for unplayed games before being added into the sum. Unplayed game(s) of an opponent are adjusted per rule 34E1 in the rulebook.

2. Median: Definition above.

3. Solkoff: The Solkoff system is the same as the Median system except no scores are removed.

4. Sonnenborn-Berger: The Sonnenborn-Berger system adds the final score of all players they defeated with ½ the sum of the opponents' scores with whom the player drew. Nothing is added for losses or un-played games. Example: If you beat a player who scored 3 points, drew a player who scored 4 points and lost to a player who scored 5 points, your tiebreak would be 3 for the win, 2 for the draw (½ of 4) and 0 for the loss for a total of 5 tiebreak points.

5. Cumulative: The Cumulative system adds the round-by-round total score of the player. So a win-loss-win would yield 1+1+2 or four points. One point is subtracted from the total for every unplayed win or one-point bye. One-half point is subtracted from the total for every unplayed draw or half-point bye.

6. Coin Flip



Safety First!

Your well-being is a top priority for US Chess. Below we have listed some items that may be of help to the players, parents, coaches, or groups who are participating in the 2022 National High School (K-12) Championship.

BEFORE YOU ARRIVE: MEDICAL AND CONTACT INFORMATION

If you are with a group, it's recommended that each participant fill out a medical form listing their parents, coach, or another adult who can allow medical treatment if necessary. All participants should have contact information on them in case of an emergency. Those who are with a group should have contact information for both their parents and the person appointed as chaperone.

BEFORE THE TOURNAMENT: TOUR THE PROPERTY

After your arrival it's a good idea to tour the property so everyone becomes familiar with the property's layout. Look for your main playing hall, skittles area, and Chess Control.

PICK YOUR SPOT: KNOW WHERE TO MEET

Determine where players should meet their groups or adult chaperone(s) after their games are finished. Remember, anyone who is lost should go immediately to Chess Control.

DURING THE TOURNAMENT: PLEASE MONITOR BEHAVIOR

Hotels as well as tournaments have safety rules that everyone must follow. Running in the halls, climbing on furniture or art work, playing outdoor games inside, such as throwing balls, is usually frowned upon and can result in injury or costly damages.

US Chess wants everyone to have a wonderful experience. You can help keep it positive by following the above recommendations. For more safety tips, see our video on YouTube (search for "Tournament Safety Tips from US Chess").

Photography Policy for National Scholastic Events

Photos and/or videos taken at US Chess national scholastic events may be published in the following manner: US Chess print publications; US Chess digital platforms including uschess.org, social media, and YouTube; and within press releases.

By attending a US Chess national event, photos and videos of you or your children at the event may be published in any or all of the above-mentioned media and devices at the sole discretion of US Chess. You are consenting to photographs being taken and shared through the above-listed platform(s) unless you expressly revoke your consent by notifying the US Chess Senior Director of Strategic Communication Daniel Lucas at dlucas@uschess.org.

Minors will not be identified by name in photo captions unless they are competing on one of the top boards or have won a championship. Championship-section winners are generally identified in our photo captions by first and last name and hometown.

Electronic Device Policy for National Events Organized by US Chess

The following policy has been reviewed and approved by the US Chess Scholastic Council and US Chess Executive Board.

Effective immediately, participants (upon starting their game) and spectators (where permitted) at tournaments directly organized by US Chess must not have on their person in the playing area any cell phone, smart watch, tablet, laptop, or other Internet-enabled device, except the following.

- Electronic scoresheets approved by the regulations governing the tournament.
- Other devices approved by US Chess prior to the event.

If a player with a game in progress is found to possess such a device, the game will be declared lost for the violating player, and the game will be submitted for rating purposes. A second such violation during the tournament will result in the same penalties, as well as removal from the tournament.

Exceptions to paragraph 2 may be specified for events covered by the Scholastic Regulations.

If a spectator is found to have such a device on his person, the offender will not be permitted to enter the playing hall for the remainder of the tournament.

If a player wishes to bring such a device into the tournament hall, the device must be turned off (not placed into “silent” or “airplane” mode) and placed either face-up on the table where the player has a game in progress, or placed into a bag that the player does not carry or open during the game in progress.

US Chess understands that players may not want to risk losing their devices. The recommended solution is to not bring them into the hall at all.

US Chess is not responsible for devices left in the playing hall.

Automatically exempt from this policy are the following.

- US Chess staff with badges for the event
- Tournament staff with badges for the event
- Other individuals with badges for the event or prior written approval from the US Chess Director of Events
- Any exceptions must be approved by the US Chess Director of Events, in writing, at least three weeks before the event begins.

To request an exception, contact the US Chess Director of Events at boyd.reed@uschess.org.

If the request involves a medical situation, additional documentation may be necessary. This allows US Chess to fully understand the situation and have enough time to ensure the proper accommodations.

Last edited August 31, 2019

Spectator Policy

In 2018, the Scholastic Council and the Executive Board approved changes to the Scholastic Regulations that updated rules for spectators at the following scholastic events:

- National Elementary (K-6) Championship
- National Middle School (K-8) Championship
- National High School (K-12) Championship
- National K-12 Grade Championships

With the change in policy, playing halls at scholastic events organized by US Chess are open only to the following people while games are in progress:

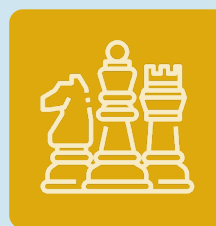
- Players with games in progress in that room
- Tournament staff
- Press and other attendees with badges authorizing their access

- Other persons directly authorized by the US Chess Director of Events

This means that parents, coaches, and other attendees who do not fall into the four categories above must leave the playing hall before the tournament director in charge of the playing hall will begin play. Once a player in that room has reported a result, that player also is considered a spectator and must leave the room for the remainder of that round. Parents and coaches should instruct their players who have completed games not to go back into the playing hall.

Attendees are strongly encouraged to use the skittles area both as a waiting room and as a meeting place after each round. Most exhibits and vendors will be housed there. Teams also can reserve a room at national scholastic events, but availability is limited and there is both a cost and a specific procedure for reserving one. Team room information will be linked on each tournament website. For parents and coaches who choose to wait in front of the main playing areas, US Chess has reconfigured its event setups to move most exhibits and vendors out of the hallways, thereby maximizing available space. Exits from the playing hall will be designated and clearly marked with signage, both inside and outside.

Please visit uschess.org, click on CLO, and search “Spectator policy” for further details. Penalties for violating this policy are at the discretion of the chief tournament director.



Need to miss a round?

If you need to miss a round, please report your absence at least one hour prior to the start of a round. If we don't know and you don't show, you will be dropped from the tournament! Even if late, let us know. It's not any fun getting paired and not having an opponent!

A maximum of one half-point bye is available in the first six rounds if requested by the start of the first round. Zero-point byes shall be available for all rounds and must be requested at least two hours before the start of the round they are requested for.

Scholastic Regulations update

Please note: the 2019-20 Scholastic Regulations added Regulation 19, which requires the use of a paper scoresheet provided by US Chess at the tournament. The entire Scholastic Regulations can be found at uschess.org. Click on the CLO logo, then search “Scholastic Regulations.”

New Scholastic Notation Regulations in Effect as of September 1, 2019

As US Chess pursues its goal to “increase the use of chess in education,” we need to remind ourselves that when scholastic players notate and review their games, they are engaged in a powerful literacy activity — one that compliments learning across the curriculum. It is also a gateway into the treasures of chess literature and history.

Notation provides a foundation for the critical feedback loop (play-review-study) that leads to improved understanding and appreciation of the game. It empowers players to support themselves in tournament disputes and share their games with others. Children who learn to notate for such personally compelling and practical reasons do not need to be “made” to write down their moves. They will do so willingly as part of their journey toward chess improvement.

What is more, quality notation can aid tournament directors in running events more smoothly and efficiently.

With these (and other) educational benefits in mind, the US Chess Scholastic Council made the following **scholastic regulations effective September 1st, 2019 beginning with the 2019-20 scholastic nationals** (see table at right).

We understand that raising notation standards will have the most impact on students with the least experience notating. For this reason, we have left notation optional for players in sections where proficiency cannot be assumed. However, we strongly encourage all chess players to learn to notate.

Just as there are “reluctant readers” at school, there are “reluctant notators” in chess. At a recent state scholastic championship, a coach noticed that one of his kindergarteners did not have a notation sheet or pencil but was seated to begin the round. When told to notate *because it is a rule of chess*, the student hemmed and hawed before offering a compromise: “Can I just write down my moves?” The coach asked what good that would do and the student replied: “Well, I only pay attention to my own moves anyway.” The coach and the student’s parent convinced him

Notation Regulations: A QUICK GUIDE

Notation is required in all sections of the following tournaments:

- **National Middle School (K-8) Championship**
- **National High School (K-12) Championship**
- **National Youth Action Championship**
- **U.S. Junior Open**

The following tournaments have different notation rules for different age groups, as shown below:

National Elementary School (K-6) Championship

K-1 Under 500 & Unrated	NO
K-1 Championship	NO
K-3 Unrated	NO
K-3 Under 700	NO
All other sections.....	YES

National K-12 Grade Championships

Kindergarten	NO
Grade 1	NO
All other sections.....	YES

All-Girls National Championships

Under 8	NO
All other sections	YES

Junior Chess Congress

Age 6 & under	NO
Age 8 & under	NO
All other sections	YES

that since spectators are not allowed in the tournament room, their only way of seeing the whole game would be if the student notated for both sides. The student proceeded to produce a beautifully notated thirty-plus move game.

To help parents and coaches prepare, the official notation sheets required for national events have been made available in advance and online so that coaches and parents can help students become familiar with the format.

New Awards at US Chess National Scholastics

US Chess has introduced new awards to be distributed at national scholastic events. These changes debuted at the 2019 National K-12 Grade Championships, which was our last national scholastic event for two years. Full implementation of these changes was interrupted due to the pandemic, but resumed beginning with the 2021 National K-12 Grade Championships. This article is intended as a reminder of the changes, as well as the deliberative process that went into their implementation.

What has been changed?

Starting in the spring of 2022, most individual awards at national scholastic events will be custom medals. This impacts the following events and sections:

- National High School (K-12) Championship — all sections
- National Middle School (K-8) Championship — all sections
- National Elementary (K-6) Championship — all K-6 sections and all K-5 sections

By the fall of 2022, we expect all individual awards at national scholastic events will be custom medals.

Also, the first place team trophy in each regular-rated section that awards a national championship title will be custom made as well. These trophies will continue to be the only team awards with the words “National Champions” in the engraving.

What do the medals look like?

The new individual medals are custom made, with bright finishes, and a unique design for every event. The front shows the logo for the event. The back has the US Chess logo engraved, the section, and the place. The lanyard for each medal is custom made for the specific event as well.

The top three medals for each section are gold, silver, and bronze. All other place medals are a copper color. The gold medal in the Championship sections bears the words “National Champion.”

Why was this change made?

There are several reasons for this change.

1. There had been a trend toward more and bigger trophies at national events. This had given way to a general sense of “trophy entitlement” — that everyone should get a trophy or an award. Most national level school-age competitions — even most competitions in general — do not work that way. The focus should be on the achievement and the effort, not the talisman.
2. Most school-age extracurricular competitions offer medals for individual achievement, and trophies for team achievement. This is true for athletics and academics.

3. US Chess has, for years, fielded complaints from parents about how difficult it is to get large trophies home. By switching to custom medals, players can wear their awards home, or to school. They still carry the same meaning and significance.

4. Of course, medals cost less than trophies. So, US Chess will save some money with the change. However, we want to use the savings to offer more features for everyone. For example, at the 2022 National Elementary, we plan to offer a seminar on chess in education. We will also have guest grandmasters offering two lectures each during the weekend, instead of just one. Finally, we have increased our number of DGT boards for broadcast — we had 12 before the pandemic, but we will now have 21! Improvements are possible in part because we can use some of the savings on awards to expand the offerings available to all.

How was this decided?

The idea was first discussed at the 2018 U.S. Open. Subsequent discussion among members of the Executive Board and Scholastic Council, along with Trophies Plus (the official provider of awards for our national scholastic events), and senior leaders of US Chess, took place between August 2018 and August 2019. At the 2019 U.S. Open, the Scholastic Regulations for 2019-2020 were proposed, and the Scholastic Council approved language permitting the awards change. The language was subsequently ratified by the Executive Board. So, this was a deliberate process, involving numerous parts of US Chess leadership, including significant input from the Scholastic Council, which is the primary advisory body for scholastic affairs.



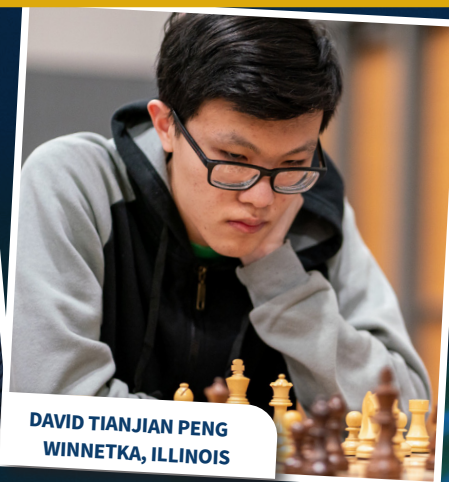
Recent Winners

National High School (K-12) Championship

2019 CO-CHAMPIONS!



NICOLAS DE T. CHECA
DOBBS FERRY, NEW YORK



DAVID TIANJIAN PENG
WINNETKA, ILLINOIS



MATTHEW STEVENS
CHICAGO, ILLINOIS

2019 TEAM CHAMPIONS!



THOMAS JEFFERSON HIGH SCHOOL
FOR SCIENCE AND TECHNOLOGY,
ALEXANDRIA, VIRGINIA

The 2019 National High School (K-12) Championship in Schaumburg, Illinois, was one for the books. The 51st edition of the tournament set an official attendance record with 1,689 players, shattering the previous best of 1,569 at the 2017 National High School (K-12) Championship in Nashville, Tennessee. Unfortunately, COVID-19 forced the cancellation of both the 2020 National High School (K-12) Championship and the 2021 SuperNationals.

For complete results from the 2019 National High School (K-12) Championship, visit <http://www.uschess.org/results/2019/hs/>.



Gold & Silver Affiliates



US CHESS would like to recognize and thank
all of our Affiliates for their commitment and hard work.

US CHESS GOLD AFFILIATES

Bay Area Chess

2050 Concourse Drive #42
San Jose, CA 95131
408-409-6596
ask@bayareachess.com
www.bayareachess.com

ChessNYC.com

1562 1st Ave #189
New York, NY 10128
212-475-8130
info@chessnyc.com
www.chessnyc.com

New Millennium Chess LLC

70 Pine Street, PH 5601
New York, NY 10005
212-475-8130
info@NewMillenniumChess.org
www.NewMillenniumChess.org

Chess Club and Scholastic Center of Saint Louis

4657 Maryland Avenue,
St. Louis, MO 63108
314-361-CHESS
info@saintlouischessclub.org
www.saintlouischessclub.org

Berkeley Chess School

2622 San Pablo Avenue,
Berkeley, CA 94702
510-843-0150
tournaments@berkeleychess
school.org
www.berkeleychessschool.org

Continental Chess Association

P.O. Box 8482
Pelham, NY 10803
201-347-2269
director@chess.us
www.chesstour.com

PaperClip Pairings

4 Jalapa Court
Brownsville, TX 78526
956-621-0377
rrferrari@bisd.us

San Diego Chess Club

2225 Sixth Avenue,
San Diego, CA 92101
619-752-4377
chucnglo@aol.com
www.sandiegochessclub.org

Capital Area Chess

Centreville VA
703-627-5314
info@capitalareachess.com
www.capitalareachess.com

Marshall Chess Club

23 West 10th Street,
New York, NY 10011
212-477-3716
admin@marshallchessclub.org
www.marshallchessclub.org

Sacred Heart University Chess Club

5151 Park Avenue
Fairfield, CT 06825
203-365-4827
clubchess@sacredheart.edu
www.sacredheartclubsports.
com/sports/Chess

WilliamsburgTutoring. com

60 Broadway
Brooklyn NY 11249
info@ChessNYC.com
www.WilliamsburgTutoring.com

Caveman Chess, LLC

27 Morris Street
Park Ridge, IL 60068
224-985-5244
contact@cavemanchess.com
www.cavemanchess.com

US CHESS SILVER AFFILIATES

Chess Center of New York (NY)

www.chesscenter.cc

Little House of Chess, Inc. (NY)

littlehouseofchess.com

Oklahoma Chess Foundation (OK)

www.OCFchess.org

En Passant Chess Club (TX)

td_edg@twc.com

Long Island Chess Nuts (NY)

516-739-3907

Rochester Chess Center (NY)

www.chessset.com

Evangel Chess Club (AL)

www.evangelchurch.me

Mechanics' Institute (CA)

www.milibrary.org/chess

Sparta Chess Club (NJ)

www.spartachessclub.org

Jersey Shore HS Chess League (NJ)

shorehschessleague@yahoo.com

Michigan Chess Association (MI)

www.michess.org

TLA CHESS (VA)

tla.chess.llc@gmail.com

For all information on becoming a Gold or Silver Affiliate, please visit www.uschess.org/content/view/7905/95.

Save the Date

MID-SOUTH CHESS

20TH ANNUAL MIDSOUTH SUMMER CHESS CAMP

JUNE 19-24, 2022 & Camp Tournament June 25, 2022

Memphis University School
6191 Park Avenue, Memphis 38119

About Our Featured Coach

International Grandmaster Joel Benjamin:

- He was the IBM consultant for Deep Blue, the computer that beat World Champion Garry Kasparov!
- Yale Graduate and Applauded Author!
- The only chess player to have won the Trifecta: the US Junior, the US Championship, and the US Senior Championship!

Joining GM Benjamin will be our always popular Summer Camp Coaches, IM-Elect Alex Velikanov, NM Nolan Hendrickson, and WGM Dorsa Derakhshani.

More acclaimed Coaches will be announced as they are added to our staff.

midsouthchess.com
901-494-2526

2021 JUNIOR GRAND PRIX FINAL STANDINGS

Congratulations to the 2021 Junior Grand Prix champion, Eshaan Hebbbar of New Jersey.

	Name	State	Count
1.	ESHAAN HEBBAR	NJ	13,729
2.	MAHATI B. KASHYAP	NJ	11,716
3.	MICHAEL DENG	MD	10,631
4.	MANISH B. KASHYAP	NJ	10,490
5.	CHLOE GAW	NY	10,391

Grand Prize: *Chess.com* one-year Diamond membership (\$100 value), *Chess.com* gear/merchandise package (\$100 value), free entry into the 2021 U.S. Open with \$1,000 to offset trip expenses, and a US Chess award. *Chess.com* also awards prizes to the top five players and to each state winner. US Chess gratefully acknowledges the participation of *Chess.com*.



Visit uschess.org/datapage/jgp-standings.php for full details and standings.

GIVE CHESS AND CHANGE A LIFE

Your Tax-Deductible Gift to **AT-RISK YOUTH** and Title I schools provides **EVERYTHING YOUNG PLAYERS WILL NEED** to compete in local and national chess tournaments. To learn more, visit our website at <https://new.uschess.org/at-risk-youth>.

Every dollar counts! Make a gift today and **CHANGE A LIFE!**

US CHESS
FEDERATION



THANK YOU TO OUR BENEFACTORS



US Chess Benefactor Members as of January 19, 2022:

Paul M. Albert Jr.
Mark Randall Bates
Randy Bauer
Jim Bedenbaugh
Michael Belovesick
Jim Blackwood
Robert J. Borel
Thomas E. Boyd
Joseph Boyle
C. Martin Bradford
John J. Brendel
Kate Canessa
David E. Carter
Fabiano Caruana
Carl Cohen
Bill N. Costaras
Jonathan Crumiller

Jeffrey Davidson
Martin Dean
Kenneth Duffy
E. Tomlinson Fort
Michael Fry
Gregory Gliner
Bill Goichberg
Bernard Goodman
Calvin Halsey
Robert E. Hux
In Memory of
David Kaplan
David Kochman
Vincent E. Kreutz, Jr.
David Lazarus
Andrew Lerner
Christopher Lewis
Jennie S. Liu
Edward Martin

William McClain
John McCrary
Kenton McNall
Robert D. Messenger
Andrew Metrick
Timur Milgrom
David C. Miller
Parker Montgomery
Ross Nickel
Bernard Novatt
Scott R. Parker
William E. Perry III
David H. Raymond
Timothy P. Redman
Timothy M. Sawyier
Michael Schulte
Edward Seid
Daryl Skinner
Phillip Smith



Christopher P. Snell
Adam Christopher Snow
Joe Strang
Aaron Straub
Henry L. Terrie
Henry J. Thompson
Harmon D. Throneberry Sr.

Thomas N. Thrush
Harold Torrance
Charles Unruh
John Walton
Bill Witmer
Edward Wycoff
Brian Yang



Chess Life and Chess Life Kids

Included with your US Chess membership!

All US Chess members have **free access** to digital editions of US Chess' award-winning magazines, **Chess Life** and **Chess Life Kids**.

Printed copies of **Chess Life** or **Chess Life Kids** can be added on to any membership for a nominal fee, currently \$9.35/year (12 issues) for *Chess Life* and \$4.75/year (6 issues) for *Chess Life Kids*.

U.S. WOMEN'S OPEN

NATIONAL OPEN



JUNE 8 – 12, 2022

INTERNATIONAL CHESS FESTIVAL

www.VegasChessFestival.com



NATIONAL OPEN

JUNE 8–12, 9–12, 10–12, OR 11–12

\$100,000 GUARANTEED PRIZE FUND

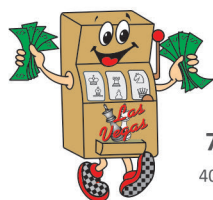
7 Rounds (Open 9) • 8 Sections • Top 3 FIDE Rated

40/90, SD/30 +30 • 3-day rounds 1–2 G/60 +10 • 2-day rounds 1–4 G/30 +5

Beginners Section with 3 Schedules of 6 Rounds Each Day

Open Section 9 Rounds in 5 days with FIDE Norms Possible

Winner is a US Chess National Champion and receives a replica of the Edmondson Cup



U.S. WOMEN'S OPEN

WEDNESDAY & THURSDAY JUNE 8–9

\$3,500 GUARANTEED PRIZE FUND

5 Round Swiss • FIDE Rated • G/90 +30

Winner is a US Chess National Champion and receives the Women's Open Cup



WALTER BROWNE MEMORIAL NATIONAL OPEN BLITZ CHAMPIONSHIP

SUNDAY JUNE 12 AT 10:30 P.M.

\$3,600 GUARANTEED PRIZE FUND

6 Double Round Swiss • G/3 +2

US Chess & FIDE Blitz Rated

Winner receives a replica of the Walter Shawn Browne Cup

INTERNATIONAL YOUTH CHAMPIONSHIP

JUNE 11–12

6 Round Swiss • 4 Sections by Age and Rating

Dozens of Individual & Team Trophies

Chess Merchandise Prizes Awarded in Each Section



Safety protocols or government regulations may require us to restrict spectators, limit attendance, or cancel some side events. Check our website for the latest information.

Grandmaster Simuls

OPEN TO ALL

THURSDAY 3:00 P.M.

OPEN TO AGE 14 & UNDER

SATURDAY 7:00 P.M.

Grandmaster Chess Camp

FOR ALL AGES

THURSDAY 10 A.M. – 6:00 P.M.

BLITZ & ACTION TOURNAMENTS

ACTION QUADS

THURSDAY 2:00 P.M.

YOUTH BLITZ (AGE 14 & UNDER)

FRIDAY 6:30 P.M.

8 PLAYER BLITZ SECTIONALS

FRIDAY MIDNIGHT

10-12 PLAYER BLITZ SECTIONALS

SATURDAY 10:30 P.M.

Free Lectures & Analysis

THURSDAY – SUNDAY

Youth Side Events (age 14 & under)

TROPHY TOURNAMENT

FRIDAY 10:00 A.M.

YOUTH BLITZ

FRIDAY 6:30 P.M.

PUZZLE SOLVING COMPETITION

SATURDAY 6:00 P.M.

YOUTH SIMUL

SATURDAY 7:00 P.M.



WESTGATE
LAS VEGAS

A short walk from The Strip with a convenient **on-site monorail station** for easy access to the rest of The Strip. Call 800-732-7117 and use group code **SVCF2R** for the lowest rates or reserve online at VegasChessFestival.com/hotel.

Win Free Hotel Stay During Chess Festival - reserve your room early for a chance to win your stay for free. Earlier reservations have more chances to win!



TROPHIES PLUS



115 MAIN STREET, BRED A, IA 51436
800-397-9993 | TROPHYMAN@TROPHIESPLUS.COM
WWW.TROPHIESPLUS.COM

***PROUD SUPPLIER OF THE NATIONAL SCHOLASTIC TOURNAMENT
AWARDS FOR US CHESS SINCE 1999***

PROUD SPONSOR OF THE 2007-2022 ALL-AMERICA TEAMS FOR US CHESS

VISIT THE US CHESS SALES CHESS SHOP IN
**RENASANT CONVENTION CENTER
ROOM 102**

Friday: 11am until 8pm
Saturday: 8am until 8pm
Sunday: 8am until 6pm

SAVE 10%

Use Coupon Code:
MEMPHIS

Expires 5/31/2022
Discounts can not be combined,
Excludes clearance, shopworn,
and imperfect items or
otherwise marked

**ONLINE
COUPON
ONLY!**

ALL ORDERS PLACED BY 2:00PM CST SHIP THE SAME BUSINESS DAY

2022 Annual Buying Guide

The Sultan Series Luxury Chess Pieces - See Page 18 for Information



WWW.USCFSALES.COM • 888.51CHESS (512-4377)

* Normal Exclusions Do Apply

FREE
GROUND SHIPPING
ON MEDIA ORDERS
OVER \$25*

FREE
GROUND SHIPPING
ON ORDERS
OVER \$100*

FREE
WORLDWIDE
ON OVER
TO 137 C



**Get Your Free Copy
in the Chess Shop Today!**



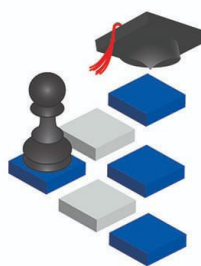
US CHESS

**WE HAVE
THE BEST
SPONSORS.**

Thank you!



US CHESS TRUST



NSCF
National Scholastic Chess Foundation

Inspiring Excellence Through Chess

Future US CHESS Events

2022

National Middle School (K-8) Championship

APRIL 29-MAY 1

Gaylord Texan Resort
and Convention Center
Grapevine, Texas

National Elementary (K- 6) Championship

MAY 13-15

Greater Columbus
Convention Center
Columbus, Ohio

U.S. Junior Chess Congress

JULY 1-3

Renaissance Orlando
at Sea World
Orlando, Florida

U.S. Open

JULY 30-AUGUST 7

Westin Mission Hills
Golf Resort & Spa
Rancho Mirage, California

National K-12 Grade Championships

DECEMBER 9-11

Gaylord National Resort
& Convention Center
National Harbor,
Maryland

2023

National High School (K- 12) Championship

MARCH 31-APRIL 2

Washington Hilton
Washington, DC

National Middle School (K-8) Championship

APRIL 21-23

Kalahari Resorts &
Conventions
Round Rock, Texas

National Elementary (K- 6) Championship

MAY 12-14

Baltimore
Convention Center
Baltimore, Maryland

U.S. Open

JULY 29-AUGUST 6

DeVos Place
Grand Rapids, Michigan

National K-12 Grade Championships

DECEMBER 15-17

Hyatt Regency Orlando
Orlando, Florida

2024

National Elementary (K- 6) Championship

APRIL 26-28

Greater Columbus
Convention Center
Columbus, Ohio

National Middle School (K-8) Championship

MAY 10-12

Hyatt Regency Atlanta
Atlanta, Georgia

U.S. Open

JULY 27-AUGUST 4

Sheraton Norfolk
Waterside Hotel
Norfolk, Virginia

National K-12 Grade Championships

DECEMBER 6-8

Gaylord National Resort
& Convention Center
National Harbor,
Maryland

2025

SuperNationals VIII

MAY 9-11

Orange County
Convention Center
Orlando, Florida

2026

National High School (K-12) Championship

MARCH 27-29

Sheraton Grand Chicago
Chicago, Illinois

Please visit uschess.org/national-events-calendar/ for details on all events



US CHESS