

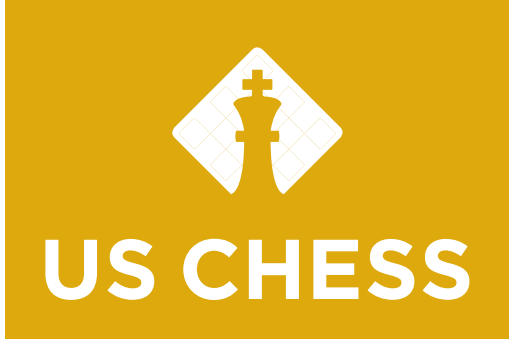


COLUMBUS, OH • May 13-15, 2022

NATIONAL Elementary CHAMPIONSHIP

(K-6)

“
What is your favorite
tournament snack?
”



raw almonds

coffee, chocolate, almonds

US CHESS EXECUTIVE DIRECTOR
Carol B. Meyer

DIRECTOR OF EVENTS
Boyd M. Reed

ASSISTANT DIRECTOR OF EVENTS
Pete Karagianis

CHIEF TD
Myron Thomas

DGT OPERATOR
Samuel Shoykhet

FLOOR CHIEF
Martha Underwood

ASSISTANT DGT MANAGER
Michael Schulte

SECTION CHIEFS
Michael Hoffpauir
Glenn Panner
Thomas Priest

CHESS CONTROL MANAGER
Kim Cramer

CHESS CONTROL STAFF
Stephanie Berk
Korey Kormick
Michelle Martinez
Joan Priest

GUEST GMS
GM Joshua Friedel
GM Elshan Moradiabadi

ANALYSTS
WGM Katerina Nemcova
FM Gauri Shankar

SCHOLASTIC COUNCIL REPRESENTATIVE
Danny Rohde

PROGRAM BOOK STAFF

Senior Director of Strategic Communication
Dan Lucas

Publications Editor
Melinda Matthews

Art Director
Natasha Roberts

Graphics Assistant
Nicole Esaltare

Kind bars

coffee

Slim Jim

Rudy Abate
CJ Armenta
Anand Dommalapati
Jim Hodina

banana

Jeff Aldrich
Sanjeev Anand
Larry Bell
William Broich
Aiya Cancio
Geoffrey Charles
Brian Costella
Miami Fugatte
Henry Getz
Bob Greer
Noreen Harkins
Vish Lakshmana
Kathy Lin
Tim McEntee
Beenmati McGreen

Frito pie

FLOOR TDS
Maya Myers
Amy Nunn
Jiten Patel
Kavita Pendyala
Usha Raghavan
William Riley
Austin Schillage
Leteef Street
Will Thomas
Crissy Vigil
Eric Vigil
Julie Wells
Bryan Wilson
Matthew Zatkoff

BACKROOM CHIEF
William Buklis

PAIRING CHIEFS
Lori Riley
John Simons
Ryan Velez

ham and cheese sandwich

Roy-Allen Bumpers
Charles Hatherhill
Allen Priest

Altoids and water

Haribo Goldbears

pistachios

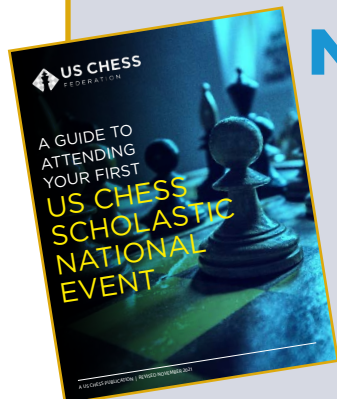
dried mango

Fritos

banana

almonds





NEW TO NATIONAL EVENTS?

National scholastic championships can be overwhelming for first-timers. If you, your child, or your team are attending a US Chess national event for the first time, scan the QR code at left to learn how to have a positive tournament experience.



US CHESS TRUST

PROVIDES FREE SETS, BOARDS AND US CHESS MEMBERSHIPS TO AT-RISK SCHOOLKIDS!



USCT also supports:

- Scholar Chess Player Awards
- GM Denker Tournament of HS Champs
- WIM Haring National Girls Champs
- Barber Tournament of MS Champs
- U.S. Blind Championship
- Pan-American Intercollegiate Team
- Final Four of College Chess
- World Chess Hall of Fame
- And many other programs

WGM and IM Carissa Yip

2021 US Chess Trust Samford Fellow

2021 US Women's Champion!

For more information on the good work of the US Chess Trust, please go to www.uschesstrust.org. Or contact us at info@uschesstrust.org.

The Trust is a separate 501(c)(3) organization operating independently of US Chess.



US CHESSTRUST

GIRLS CLUB ROOM

All female players, along with their families and coaches, are invited to come to the Girls Club Room!

Union Ballroom A
Friday -Sunday

***Masks required**



SPECIAL GUESTS:
WGM Katerina Nemcova
WGM Jennifer Shahade

Coach Krista and
Arthur Alton
* Plus surprise guests!

Friday, May 13

2:00 P.M. - **Chess Trivia Speed Game**
3:00 P.M. - **Welcome and Q+A with Jennifer**
4:00 P.M. - **Autographs by Jennifer**
4:00 - 6:00 P.M. - **Chess square craft with Krista**

Saturday, May 14

10:00 A.M. - 6:00 P.M. - **Club open for skittles, puzzles, and crafts**
11:00 A.M. - **Meet & Greet with Katerina**
11:30 A.M. - **Tandem simul with Katerina and Jennifer**
3:30 P.M. - **Altons Present: Human Chess Game**
4:00 P.M. - **Tower Building contest**

Sunday, May 15

11:00 A.M. - **Town Hall Meeting***
Noon - **Farewell raffles!**

***Parents, coaches, and students of all genders welcome at the Town Hall**

Please check onsite and @USChessWomen on Twitter for any schedule updates.

Welcome

...to the 2022 National Elementary (K-6) Championship!

US Chess is pleased to be hosting the 2022 National Elementary (K-6) Championship in Columbus, Ohio, the state capital and the nation's 15th largest city. Columbus has something for everyone — arts and entertainment, collegiate and professional sports, a burgeoning food scene, and a spectacular downtown riverfront — so we hope you'll find time to explore while you're here. Thank you for your attendance and for your support of our national scholastic events!

COVID-19 Procedural Changes

Because of the challenges presented by COVID-19, US Chess has implemented special requirements and is providing safety-related assistance for this event. Find details at the tournament website: <http://www.uschess.org/tournaments/2022/elem/> or by scanning the QR code below. US Chess appreciates your help in promoting this safer environment!

Latest updates

Use your smart phone to scan here for the latest updates!



INFORMATION

PAIRINGS/
RESULTS



TOURNAMENT STAFF	03
WELCOME LETTERS.....	06
WHAT'S ON	10
Tournament highlights	
SPECIAL GUESTS	12
TOURNAMENT SCHEDULE	14
TOURNAMENT RULES	17
POLICIES & PROCEDURES	20
RECENT WINNERS	24
FUTURE EVENTS.....	31

Share with us!

We want to know all about your tournament experience. Share your stories and photos on social media using **#ElemChessChamps.**



FROM THE DIRECTOR OF EVENTS

WELCOME TO THE 2022 NATIONAL

It's my privilege to be part of the team that will make this a quality experience for all players, parents, coaches, and spectators. We're pleased to be partnering with the Greater Columbus Convention Center for this event. The National High School Championship has been held here four times since 2003, and this location has proven to be extremely popular. We hope the attendees at the National Elementary enjoy it just as much.

US Chess is taking all reasonable steps to help ensure the safety and well-being of our players, parents, and coaches. Anyone wearing an official US Chess badge at this event — even the vendors — will be fully vaccinated against COVID-19. We will be disinfecting all pieces between each round. We are providing hand sanitizer for every player. Masks are required to be worn, covering the nose and mouth, during any round of this event, and in all US Chess meeting spaces. We are reducing the number of public postings and encouraging all players and parents to check pairings and standings online. Similar measures have been employed successfully at every US Chess national event since the 2021 U.S. Open. These reflect the classroom mitigation practices currently employed by many school districts around the country.

We've assembled a first-rate team of directors, led by NTD Myron Thomas (chief tournament director), NTD Martha Underwood (floor chief), and NTD William Buklis (backroom chief). They will ensure that the tournament is conducted with full observance of all US Chess rules. Kim Cramer and her staff at Chess Control will be happy to assist with any questions you have.

We have two guest grandmasters! GM Joshua Friedel, 2013 U.S. Open champion, and GM Elshan Moradiabadi, 2021 World Cup qualifier, will each give two lectures, as well as take on our scholastic players in the skittles area in the very popular "take-on-all-comers" blitz. The lectures are free to all, and the blitz games are free and open to any tournament player!

We will be broadcasting live analysis of the top championship section boards on the US Chess Twitch feed. Our analysts are WGM Katerina Nemcova and FM Gauri Shankar. This live analysis will occur in rounds five through seven. Please check the schedule of events in this program for the exact times. We welcome you to watch the stream on Twitch at <http://www.twitch.tv/uschess>. When you see Pete Karagianis, Assistant Director of Events, moving around the site, send all compliments and congratulations his way, as he is the driving force behind our streaming operations.

US Chess wants you to have fun and really enjoy yourselves at this event. Of course, we also want you to do so safely. Be aware of your surroundings, and keep in mind that you're sharing space with several thousand people this weekend. Remember, safety is no accident.

We are also offering several informational lectures this weekend. The lectures will be on various topics of importance to the scholastic chess community. These lectures are free and highly informational. We encourage you to attend at least one of them. Please check the schedule of events for the subjects, times, and location.

Under the strategic direction of our Executive Director, Carol Meyer, we are constantly looking for ways to improve our national events. I welcome any ideas or comments you have in that regard.

Please accept my best wishes for an enjoyable and successful tournament.

Sincerely,



Boyd M. Reed
Director of Events

FROM THE EXECUTIVE DIRECTOR

ELEMENTARY (K-6) CHAMPIONSHIP



Dear Friends in Chess,

Welcome to Columbus! We are thrilled for the return of scholastic over-the-board chess with the 2022 National Elementary School (K-6) Championship! The return of national scholastic play is something to celebrate and enjoy.

The Scholastic Spring Nationals will look a little different this year. Not surprisingly, the COVID-19 pandemic has made us hyper-focused on your safety. We are using several tools to reduce the spread of viruses by requiring that all players and accompanying persons wear face masks in our contracted spaces. While I will miss seeing the smiles of our players when sharing their joy after winning a game, the mask requirement is a key element of our strategy in promoting a safe environment for all. In addition, we are requiring all US Chess employees working this event, including contractors and volunteers, to be fully vaccinated against COVID-19. There are no exceptions to this policy. Finally, we have added electrostatic sprayers (think *Ghostbusters!*) to spray every board setting and table space with

disinfecting spray before every round. These measures taken together with other common-sense practices such as hand washing will increase your safety at the event.

The recently updated CDC mask guidance applies to local communities and local virus transmission rates. For US Chess, national events are a melting pot of players from communities all over the country — this is not a tournament at your local school where the players are from the same community. At the time I write this note, some communities continue showing high rates of transmission (including my own here in Raleigh, North Carolina). Almost every player in this tournament will be seated next to and across from someone they do not know. Therefore, to protect players, families, coaches, and staff, US Chess decided to keep the safety measures in place through this year's spring national scholastic events.

We are doing our part to minimize the risk to you, players, and the staff working the event. We request your cooperation in complying with the mask rule so that everyone can have a fun and safe chess event. If you have questions about these mitigation efforts, please visit Chess Control for more information. Or if you or your player becomes sick during or after the event, please email events@uschess.org to let us know. We will protect your identity but will notify others who attended the event that there could have been exposure.

Thank you for being part of our return to over-the-board scholastic chess. We appreciate your support for your chess player, for US Chess, and for being part of our community. If you see me around during the tournament, please stop me and say hello. I hope you have a great tournament.

Warmest regards,



Carol B. Meyer
US Chess Executive Director

WELCOME TO



ANDREW J. GINTHER
Mayor of Columbus

Greetings:

On behalf of the people of Columbus, I am delighted to welcome you to our state capital and Ohio's largest city. Columbus is a growing, vibrant city known for its dynamic business climate, friendly neighborhoods, and modern, efficient government. Each year, an increasing number of visitors from around the world come to our city to meet, compete, trade, and enjoy what Columbus has to offer.

As Mayor of the City of Columbus, Ohio, it is an honor to welcome the members of the US Chess Federation to Columbus for the 2022 National Elementary (K-6) Championship. We are proud to host this significant event that will take place from May 13th-May 15th. The tournament will take place at the Greater Columbus Convention Center.

While you are here, we invite you to explore the many things we love about our community: the new COSI, the world famous Columbus Zoo, The Ohio State University, the fantastic shopping, and the vibrant nightlife in places like the Short

North, German Village, the Brewery District, Easton Town Center, the King Center for the Performing Arts, which showcases the works of nationally acclaimed artist Brenda Aminah Lynn Robinson, and dozens of friendly spots in every Columbus neighborhood.

There's so much to discover in Columbus. But what we hope you'll find most of all is our generous hospitality and special quality of life that brings visitors back, and leads more and more people to make Columbus their home.

Best wishes for an enjoyable event!

Sincerely,
Andrew J. Ginther
Mayor of Columbus

TAKE OUR NATIONAL EVENTS SURVEY

US Chess appreciates your membership, sponsorship, and attendance at our national events. Please help us improve the service we provide at our national championships by completing this tournament survey. Visit <https://www.surveymonkey.com/r/2022Elementary> or scan the QR code on the right.

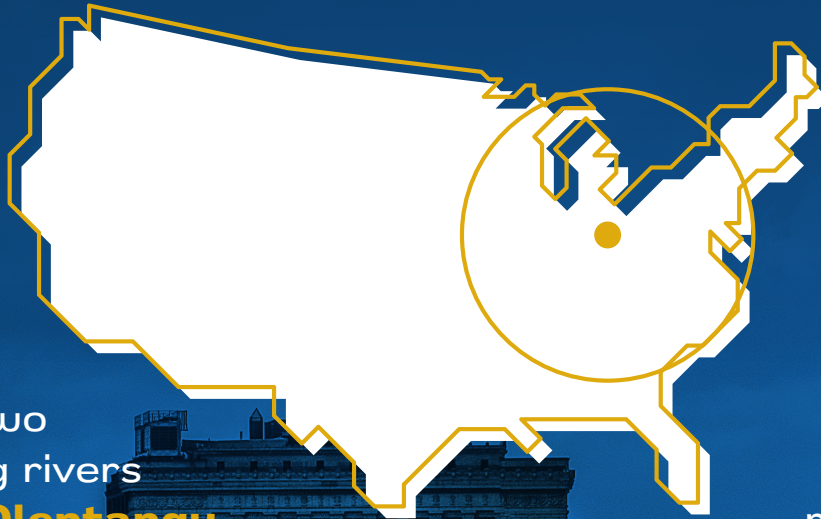


COLUMBUS, OHIO

FUN FACTS ABOUT COLUMBUS

Columbus

is located in the middle of two intersecting rivers called the **Olentangy** and the **Scioto**.



Nearly **half of all Americans** live within **500 miles** of Columbus.

A resident of Columbus is referred to as a "**Columbusite**."

NEED A BITE?

Searching out quick and convenient meals can be challenging at national scholastic tournaments. Fortunately, you don't even need to leave the building to find dining options at the **Greater Columbus Convention Center**.

The Marketplace in the South facility features a variety of cuisines and some places even offer delivery. Visit **<https://tinyurl.com/vrdskr>** or scan the QR code at right for a complete list of restaurants.

If you want to explore food options offsite, the **North Market** is within walking distance and is an authentic public market whose merchants, farmers, and makers have served the community and its visitors since 1876. Visit **northmarket.com** or scan the QR code at right for more information.



What's On

National Elementary (K-6) Championship Tournament highlights



SCHOLASTIC MEETING

Join **DANNY ROHDE** in Fairfield for the Scholastic Council meeting at 2:15 p.m. Saturday, May 14, to learn more about our scholastic programs.

SATURDAY at 2:15PM
in **FAIRFIELD**



US CHESS MEET & GREET

Join US Chess President **MIKE HOFFPAUIR**, Executive Director **CAROL MEYER**, and Women's Programs Director **JENNIFER SHAHADE** for an informative update on some of our most popular chess programs.

FRIDAY at 6:15PM
in **CLARK**



EDUCATIONAL SEMINARS

New to scholastic tournaments or just want to learn more about them? Then join us for "My First Tournament." Also check out "The Benefits of Chess as an Educational Tool" or "Preparing for International Youth Events" to broaden your knowledge about chess' impact and reach. See schedule on page 14 for times and locations.

SEE SCHEDULE at PAGE 14

MEET OUR GUEST GMS

We're offering **11 exciting opportunities** to interact with **GM JOSHUA FRIEDEL** and **GM ELSHAN MORADIABADI**!

Our Guest GMs will kick off their appearances with a tandem simul exhibition on Friday, May 13, in Exhibit Hall A. The grandmasters will give two lectures each, and will offer six opportunities to do battle with them at "take-on-all-comers" blitz.

TANDEM SIMUL on **FRIDAY at 9:00AM** in **EXHIBIT HALL A**
LECTURES on **FRI, SAT, and SUN** in **FAIRFIELD**
"ALL COMERS" BLITZ on **FRI, SAT, and SUN** in **EXHIBIT HALL A**
SEE SCHEDULE at PAGE 14 for times.

FRIENDS & FAMILY



Why should tournament play be limited to the kids? Get your game on and join the Friends and Family tournament on Saturday, May 14, in Delaware D beginning at 10:30 a.m. Visit Chess Control to sign up, and see the schedule on page 14 for round times.

SATURDAY beginning at 10:30AM in **DELAWARE D**



LIVESTREAM MANIA

Hosts **WGM KATERINA NEMCOVA** and **FM GAURI SHANKAR** livestream the decisive final rounds at 6:00 p.m. Saturday, May 14, and at 10:00 a.m. and 2:00 p.m. Sunday, May 15. Tune in at twitch.tv/uschess to follow the action!

SATURDAY at 6:00PM
SUNDAY at 10:00AM & 2:00PM
 on **TWITCH.TV/USCHESS**

NEED ASSISTANCE? VISIT CHESS CONTROL



Chess Control is the heart of your tournament experience. If you have questions, comments, or concerns, stop by County Foyer and talk to our friendly staff.

Located at **COUNTY FOYER**



GIRLS CLUB

The popular Girls Club is located in Union Ballroom A and, as usual, will be filled with events and special guests. Don't miss it! See page 4 for the complete schedule.

SEE PAGE 4 for times in **UNION BALLROOM A**



BUGHOUSE & BLITZ

No scholastic event would be complete without the popular bughouse and blitz tournaments. Bughouse begins on Thursday, May 12, at 11:00 a.m., and blitz takes off that same evening at 5:00 p.m., both in Battelle Hall. Sign up at least a half hour prior at Chess Control.

BUGHOUSE on THURSDAY at 11:00AM
BLITZ on THURSDAY at 5:00PM
 both in **BATTELLE HALL**



SKITTLES ROOMS

For pickup play, post-mortems, and making new friends, visit the skittles rooms in Exhibit Hall A. Check the schedule onsite for times.

SEE ONSITE SCHEDULE FOR TIMES in **EXHIBIT HALL A**

Special Guests

Meet our distinguished visitors

LIVESTREAM HOSTS



WGM KATERINA NEMCOVA: International competitor

Katerina is a five-time Olympiad player, a four-time world team player, and ranks among the top eight female players in the country. She was the Czech women's champion in 2008 and 2010 and won the 2008 European Youth Chess Championship. Nemcova switched to the United States Chess Federation in 2013 while studying at and playing for the University of Texas at Brownsville (now the University of Texas Rio Grande Valley). Katerina has since competed in several U.S. Women's Championships and is currently completing her Ph.D. in communication at the University of Arizona.

.....



FM GAURI SHANKAR: Chicago-area coach and streamer

Gauri works full time as a chess coach in Chicago. His after-school chess programs have introduced chess to over 1,000 kids in the Chicago area. In 2006, Gauri won the U15 section of the U.S. Junior Open and was the Illinois Scholastic K-8 champion. He holds seven international master norms and is looking to complete his international master title. In his spare time, Gauri enjoys reading, playing the piano, singing, traveling, and streaming chess on Twitch, where he currently has amassed a following of over 22,000 viewers.

GIRLS CLUB SPECIAL GUESTS

In addition to a full slate of activities, the Girls Club will be hosting these special guests. Be sure to stop by to meet them! You can find the complete schedule and times on page 4.



WGM JENNIFER SHAHADE: Women's Program Director

US Chess Women's Program Director Jennifer Shahade is a two-time U.S. Women's champion and the first female to win the U.S. Junior Open. She's the award-winning host of two podcasts: Ladies Knight and the GRID. She's also the author of the newly released *Chess Queens: The True Story of a Chess Champion and the Greatest Female Players of all Time*.

.....

WGM Katerina Nemcova will drop by the Girls Club between livestreaming duties. Look for her on Saturday beginning at 10:00 a.m., where she'll meet and greet visitors and join Jennifer in a tandem simul. Read more about her in her livestream bio, above. Additionally, **Coaches Krista and Arthur Alton** will host two sessions, including a Human Chess Game at 3:30 p.m. Saturday. Also be on the lookout for surprise guests.

SCHOLASTIC COUNCIL REP DANNY ROHDE



Former scholastic player, active tournament director, event manager, and chess coach

Danny Rohde participated in his first national scholastic tournament as a kindergartner and continued competing in national events regularly through high school. Upon graduating from the University of Michigan in 2011, Danny returned to New York and found his way into his current roles as an active tournament director, chess coach, and event manager. He also serves as the scholastic coordinator for the New York State Chess Association and is a member of the US Chess Development committee and Scholastic Council. In 2021, Danny received the individual Scholastic Service award from US Chess for his volunteer work during the pandemic.

GUEST GRANDMASTERS



GM JOSHUA FRIEDEL: 2013 U.S. Open champion

GM Joshua Friedel is the only chess grandmaster to come out of New Hampshire, where he started playing tournament chess at the age of six. He was the New Hampshire state champion three times and the Northern California champion twice. Josh was the 2013 U.S. Open champion, and has won numerous other open tournaments throughout the United States, including the Pan Am, Eastern, St. Louis, National, and American Opens. He currently resides in Wisconsin, and is a regular GM-in-Residence at the Saint Louis Chess Club.

GM ELSHAN MORADIABADI: 2011 & 2021 World Cup qualifier

Originally from Iran, GM Elshan Moradiabadi came to the United States in 2012 to attend graduate school and to join Texas Tech's chess program. His many accomplishments include winning the 2017 US Chess Grand Prix and qualifying for the 2011 and 2021 World Cups. He coached Team USA at the 2019 World Team Championships in Kazakhstan and was seeded into the 2020 U.S. Championship — something he hopes to achieve again. Find Elshan online: @eli_1985_mor (Twitter); @moradiabadi (Instagram); and @GM_Elshan1985 (Twitch).



Thursday

Chess Control	9:00 a.m. - 9:00 p.m.	County Foyer
Bughouse Tournament	11:00 a.m. - 2:00 p.m.	Battelle Hall
Blitz Tournament: K-6 & K-3	5:00 p.m. - 8:00 p.m.	Battelle Hall
Skittles, T-Shirts, Other Vendors	Thursday-Sunday*	Exhibit Hall A

Friday

Girls Club	Friday- Sunday*	Union Ballroom A
K-1 Parent Waiting Area	Friday- Sunday*	Union Station C
Chess Control	8:00 a.m. - 8:00 p.m.	County Foyer
Tandem Simultaneous Exhibition - GM J. Friedel & GM E. Moradiabadi	9:00 a.m. - 12:00 p.m.	Exhibit Hall A
My First Tournament Seminar	9:30 a.m. - 10:30 a.m.	Fairfield
Bookstore	11:00 a.m. - 8:00 p.m.	Delaware AB
Opening Ceremony	12:45 p.m. - 1:00 p.m.	Battelle Hall
ROUND 1: K-6, K-5, K-3	1:00 p.m. - 4:10 p.m.	Battelle Hall
ROUND 1: K-1	1:30 p.m. - 4:40 p.m.	Union Station AB
"All Comers" Blitz - GM E. Moradiabadi	2:00 p.m. - 4:00 p.m.	Exhibit Hall A
"All Comers" Blitz - GM J. Friedel	4:00 p.m. - 6:00 p.m.	Exhibit Hall A
Lecture and Q+A - GM E. Moradiabadi	4:15 p.m. - 5:15 p.m.	Fairfield
ROUND 2: K-1	5:30 p.m. - 8:40 p.m.	Union Station AB
ROUND 2: K-6, K-5, K-3	6:00 p.m. - 9:10 p.m.	Battelle Hall
Meet and Greet with US Chess Officials	6:15 p.m. - 7:15 p.m. (approx.)	Clark

Saturday

Chess Control	8:00 a.m. - 8:00 p.m.	County Foyer
Bookstore	8:00 a.m. - 8:00 p.m.	Delaware AB
ROUND 3: K-1	9:30 a.m. - 12:40 p.m.	Union Station AB
Presentation of Top 5 K-6 & K-3 Blitz Individual Winners	9:50 a.m. - 10:00 a.m.	Battelle Hall
ROUND 3: K-6, K-5, K-3	10:00 a.m. - 1:10 p.m.	Battelle Hall
The Benefit of Chess as an Educational Tool Seminar	10:00 a.m. - 11:00 a.m.	Fairfield
ROUND 1 FRIENDS AND FAMILY	10:30 a.m. - 11:40 a.m.	Delaware D
Lecture and Q+A - GM J. Friedel	12:00 p.m. - 1:00 p.m.	Fairfield
ROUND 2 FRIENDS AND FAMILY	12:30 p.m. - 1:40 p.m.	Delaware D
Lecture and Q+A - GM E. Moradiabadi	1:00 p.m. - 2:00 p.m.	Fairfield
ROUND 4: K-1	1:30 p.m. - 4:40 p.m.	Union Station AB
Presentation of Top 5 Bughouse Winners	1:50 p.m. - 2:00 p.m.	Battelle Hall
ROUND 4: K-6, K-5, K-3	2:00 p.m. - 5:10 p.m.	Battelle Hall
Scholastic Meeting	2:15 p.m. - 3:15 p.m.	Fairfield
ROUND 3 FRIENDS AND FAMILY	2:30 p.m. - 3:40 p.m.	Delaware D
"All Comers" Blitz - GM E. Moradiabadi	2:30 p.m. - 4:30 p.m.	Exhibit Hall A
ROUND 4 FRIENDS AND FAMILY	4:30 p.m. - 5:40 p.m.	Delaware D
"All Comers" Blitz - GM J. Friedel	4:30 p.m. - 6:30 p.m.	Exhibit Hall A

BOOKSTORE

Be sure to visit the bookstore while you're here!
Located in Delaware AB, the bookstore opens on Friday morning. See the schedule for times.

OPENING FRIDAY in DELAWARE AB

2022 NATIONAL ELEMENTARY (K-6) CHAMPIONSHIP

ROUND 5: K-1	5:30 p.m. - 8:40 p.m.	Union Station AB
Presentation of Top 5 K-6 & K-3 Blitz Team Winners	5:50 p.m. - 6:00 p.m.	Battelle Hall
ROUND 5: K-6, K-5, K-3	6:00 p.m. - 9:10 p.m.	Battelle Hall
Round 5 - Livestream of top boards, K-6, K-5, and K-3 Championship	6:00 p.m. - 9:10 p.m.	<i>twitch.tv/uschess</i>

Sunday

Chess Control	8:00 a.m. - 2:30 p.m.	County Foyer
Bookstore	8:00 a.m. - 6:00 p.m.	Delaware AB
ROUND 6: K-1	9:30 a.m. - 12:40 p.m.	Union Station AB
ROUND 6: K-6, K-5, K-3	10:00 a.m. - 1:10 p.m.	Battelle Hall
Round 6 - Livestream of top boards, K-6, K5, and K-3 Championship	10:00 a.m. - 1:10 p.m.	<i>twitch.tv/uschess</i>
Preparing for International Youth Events Seminar	10:15 a.m. - 11:15 a.m.	Fairfield
"All Comers" Blitz - GM E. Moradiabadi	12:30 p.m. - 2:30 p.m.	Exhibit Hall A
Lecture and Q+A - GM J. Friedel	1:00 p.m. - 2:00 p.m.	Fairfield
ROUND 7: K-1	1:30 p.m. - 4:40 p.m.	Union Station AB
ROUND 7: K-6, K-5, K-3	2:00 p.m. - 5:10 p.m.	Battelle Hall
Round 7, Livestream of top boards - K-6, K5, and K-3 Championship	2:00 p.m. - 5:10 p.m.	<i>twitch.tv/uschess</i>
"All Comers" Blitz - GM J. Friedel	2:30 p.m. - 4:30 p.m.	Exhibit Hall A

End times are approximate

Awards Ceremony, K-1 & K-3: approximately 5:30 p.m. at Union Station C
Awards Ceremony, K-5 & K-6: approximately 6:00 p.m. at Battelle Hall

2022 National Elementary (K-6) Championship – Tournament Rules

Note: *Posted procedures at the site supersede these published procedures.*

This event is sanctioned by the United States Chess Federation and conducted by its rules. The *7th Edition of the US Chess Federation's Official Rules of Chess with Rulebook Changes* (2003-2022) and the US Chess National Scholastic Chess Tournament Regulations are the basis for all the rules and regulations. The following rules are included here to answer frequently-asked questions, note any changes to the rule book, and to remind players of useful information. **They are not intended to supersede or modify the US Chess Rulebook or the US Chess National Scholastic Chess Tournament Regulations.**

Tournament Directors (TDs)

Tournament Directors (TD) will always be on the tournament floor to assist you in the event of any problem or question. To summon a director, pause your clock, raise your hand and keep it in the air until a TD comes to assist you. Remember that a TD will generally not interfere with your game. *It is up to you to make a claim.* If you think that a TD has ruled incorrectly concerning your game, you should appeal immediately to a higher TD authority.

Clocks and Time Controls

The time control for all sections of the National Elementary (K-6) Championship is game in ninety (90) minutes with 5-second delay (G/90, d5). **A digital clock with time delay set is preferable to any other clock. Therefore, if White has such a clock available and Black does not, White's clock should be used.**

Analog clocks in the National Elementary (K-6) Championship should be set at 4:30. The game must be either won or drawn before the flag falls at 6:00. If a time delay clock is used, it must be set with the time delay in force from move one. Digital clocks must be set to produce no sound. If both flags have fallen, the game is a draw, providing one of the players in the game claims the flag-fall before checkmate is played. **The TD will tell you which way to face your clock.** White's clock must be started first, either by Black or by White, and White must make the first move before starting Black's clock.

Start of the Game

White's clock must be started as soon as the TD announces that the round has begun. White's clock is *always* started first, even if Black is not present at the start of the game. If a clock is not available at the start of a round, any elapsed

time before one becomes available will be evenly split between players by the TD. If both players are late for the start of a round, the first to arrive must summon a TD to split the elapsed time before starting the clock.

Recording Moves

Chess notation is required in all K-6 sections, all K-5 sections, the K-3 Championship section, and the K-3 Under 1000 section of the National Elementary (K-6) Championship. Each player in those sections is required to record the moves, move after move. Neither player is required to keep score if either player has less than five minutes left. **Score sheets must be kept in plain view of the opponent and the TDs.**

Notation is **strongly encouraged** for *all* players, regardless of grade or section. However, notation is not required for players in any K-1 section, the K-3 Under 700 section, and the K-3 Unrated section. **Please note**, players who choose not to take notation give up the right to make any scoresheet-related claims, such as the 50-move rule and threefold repetition.

Electronic Recording Devices (ERD)

Unless approved in advance, in writing, by the tournament organizer, no ERDs are permitted at this event, per paragraph 19.1.6 of the US Chess Scholastic Regulations. Those players granted advance written approval to use an ERD must, at all times, play the intended move on the board first, before recording it on the device. **Further, the ERD must be kept on the table throughout the game; players may not take an ERD outside the tournament hall while a game is in progress. Also, no electronic devices may be taken to the restrooms.** Failure to follow these procedures may result in penalties, if observed by a TD, even without a claim from the opponent.

Touch-Move

If you intentionally touch a piece when it is your turn, that piece must be moved if you can do so legally. If you intentionally touch an opponent's piece when it is your turn to move, the opponent's piece must be captured if you can do so legally. You must clearly say, "I adjust" before touching a piece if you want to adjust that piece on the board. You may do so only when it is your turn. If you accidentally release a piece on an unintended but legal square, you must leave it on that square. You may not touch any pieces on the board when it is not your turn.

Illegal Moves

If it is discovered that one of either player's last 10 moves was illegal, the position will be reinstated to what it was before the illegal move, and the game shall continue by applying the touch-move rule to the move replacing the illegal move. Clocks will not be reset. If neither player has used one hour, there will be no time penalty assessed for an illegal move.

TOURNAMENT RULES

If either player has used one hour, then any illegal move will result in two minutes being added to the opponent of the player making the illegal move. A player must raise his/her hand and claim an illegal move. The TD will not do so; neither may parents, coaches, nor other spectators.

Check

Announcing check is not necessary. It is the responsibility of the opponent to notice the check. A player who does not notice the check may suffer grave consequences (see the touch-move rule).

Time Forfeits

Only the players involved in a game may claim a Time Forfeit in that game. No parent, coach, spectator, other players or TD may make such a claim or bring the fall of a flag to the attention of the players. A player may claim a Time Forfeit only if he/she stops the clocks before the claimant's own time runs out. If both flags are down, the game is a draw.

Late Arrivals

In general, a player who is at least one hour late for a scheduled round loses the game by forfeit and will not be paired for the next round unless reinstated by the Chief TD. The hour is measured from when the round was started. Request for reinstatement, if desired, must be made by the player, coach, or parent, to the Section Chief, Floor Chief, or Chief Tournament Director.

Draws

If you want to offer a draw to your opponent, you should do so after you make a move but before you start your opponent's clock. A draw offer is valid, and may not be retracted, until it is accepted or declined by your opponent. Your opponent may decline the draw by saying so or by moving a piece. If both players agree to a draw, then the game is over regardless of previous checkmate, stalemate, or illegal positions. A reasonably complete and accurate scoresheet is required to claim a draw by triple occurrence of position or under the 50-move rule. If such a claim is found to be incorrect, two minutes will be added to the opponent's remaining time.

Analysis of Games

Do **not** analyze games in the tournament room. Analyze your games in the skittles area or elsewhere.

Reporting Results

Immediately upon completion of the game, the players should carefully complete and sign the results sheet at their board, without disturbing the position, and hold the results sheet up in the air until a TD comes to get it. **Players should not sign the results sheet until the correct result has been recorded! Both players must remain at their board until a TD takes the results sheet.** Only after the TD has done so

should both players set up the pieces and leave the playing area.

Pairings

The WinTD pairing program will be used for this tournament. Players will generally be paired with other players who have the same score each round. Players should not be assigned the same color three times in a row unless there is no other way to pair the score group or unless necessary to equalize colors. Every reasonable effort will be made to avoid pairing players from the same school together. Players from the same State or Team will not be paired together earlier than Round 5, unless no other reasonable pairing can be made. You can find other situations in Paragraph 18.1.2 of the Scholastic Regulations. If you believe there is a pairing error, report it to a TD immediately! Once the round starts, it will probably be too late to make any changes. Parents and coaches should check the correctness of pairings and standings every round. Errors in scores reported after two or more rounds would most likely not be corrected. **Re-pairings in Round 1, or any other round, will not take place, except to correct registration or pairing errors.**

Pairings will be available online, at the tournament webpage. Pairings are almost always published online before they are posted on paper at the tournament site.

Conduct of Players

Please try to keep as quiet as possible on the tournament floor so that you do not disturb other players. ***You may not speak to anyone while your game is in progress unless you have asked a TD to be present.*** If there is a problem of any kind during your game, call a TD immediately. If you wait until after your game is over, the result probably cannot be changed even if your claim was correct. ***Be careful what you sign — once you have signed your result sheet, and agreed to the result on it, it is very difficult to change later.*** You may not consult notes, chess books, computers, or other materials during the game. You may not bring food or soda into the tournament hall at any time. If you need to go to the bathroom while your game is in progress, you must use the bathrooms designated for tournament players. You do not need to ask permission from the TD for this. You may not leave the tournament room during your game other than to go to the restroom if it is outside the tournament room. Exceptions can be made only if you have permission and are accompanied by a TD.

Half-Point Bye

One half-point bye will be available in any round, if requested at Chess Control no later than 11am on Friday, the first day of the event. On-site registrations after 11am will receive a ½-point bye for the first round unless otherwise determined by the Chief TD. The Chief TD may

grant a ½-point bye during any round, even after the cut-off, for unusual circumstances.

Interference

No interference in any game by spectators, other players, coaches or parents will be tolerated. Potential penalties include expulsion from the tournament. Only the player involved may point out irregularities. This should be done by raising your hand to summon a TD.

Other Rules

This is an individual tournament with team scoring. In each section, a team may have as many players as desired, but **only the top four scores count for team results and tiebreaks**. A school must have at least two players in a section to be eligible for team awards in that section. Players and coaches/ parents are responsible for confirming the accuracy of all player information.

Penalties

Penalties for rules violations are at the discretion of the TD and may vary from warnings and time penalties to forfeitures and expulsion from the tournament.

Cell Phones

Cell phone use is not permitted in the tournament hall by the players or spectators. **CELL PHONES MUST BE TURNED OFF IN THE PLAYING HALLS.** If a cell phone rings, a player will be assessed a time penalty the first time and forfeited for any repeat offense during the tournament. A player using his cell phone for calling, answering a call, sending a text message, or reading text messages while the game is in progress may be forfeited instantly. **We strongly encourage players to leave their cell phones with their parents or coaches.** If you bring your cell phone into the Playing Hall, it must be turned off and stowed in a back-pack, purse, or chess bag for the duration of your game. Once your game begins, your cell phone must remain stowed away. Until your game ends, you may not carry your cell phone in your hand, pocket, or anywhere else in your person. **You cannot take it to the bathroom or anywhere else.** We refer players, parents and coaches to Paragraph 21.5 of the Scholastic Regulations.

What Award Did I Win?

In cases of ties, individual awards cannot be split. We will use tiebreaks to award both individual medals and team trophies.

Individual Tie-Breaks

Below is the tiebreak order in which individual ties are broken in this event and an explanation of how to calculate the tiebreak total.

Individual ties for medals are broken by Modified Median, Median, Solkoff, Sonnenborn-Berger, Cumulative, and coin toss, in that order. Players can win only one individual

medal. Place medals take precedence over all other medals awards.

1. Modified Median: First, the Median system sums the scores of the opponents of the player in the tie and then subtracts the high and low score. The Modified Median system for players with a plus score only removes the lowest opponent's score. For an even score, the highest and lowest opponent scores are removed, while the highest score is removed for those players with a minus score. Please note that opponents' scores are adjusted for unplayed games before being added into the sum. Unplayed game(s) of an opponent are adjusted per rule 34E1 in the rulebook.

2. Median: Definition above.

3. Solkoff: The Solkoff system is the same as the Median system except no scores are removed.

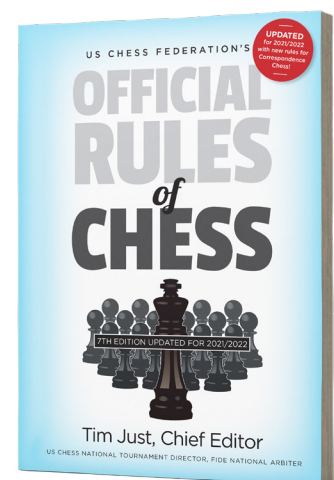
4. Sonnenborn-Berger: The Sonnenborn-Berger system adds the final score of all players they defeated with ½ the sum of the opponents' scores with whom the player drew. Nothing is added for losses or un-played games. Example: If you beat a player who scored 3 points, drew a player who scored 4 points and lost to a player who scored 5 points, your tiebreak would be 3 for the win, 2 for the draw (½ of 4) and 0 for the loss for a total of 5 tiebreak points.

5. Cumulative: The Cumulative system adds the round-by-round total score of the player. So a win-loss-win would yield 1+1+2 or four points. One point is subtracted from the total for every unplayed win or one-point bye. One-half point is subtracted from the total for every unplayed draw or half-point bye.

6. Coin Flip

Team Tie-Breaks

The team tie-breaks are Total Individual Median, Total Solkoff, Total Sonnenborn-Berger, Total Cumulative, and Coin Flip in that order. Please see the "Individual Tie-Breaks" section above for more details on each tie-break.





Safety First!

Your well-being is a top priority for US Chess. Below we have listed some items that may be of help to the players, parents, coaches, or groups who are participating in the 2022 National Elementary School (K-6) Championship.

BEFORE YOU ARRIVE: MEDICAL AND CONTACT INFORMATION

If you are with a group, it's recommended that each participant fill out a medical form listing their parents, coach, or another adult who can allow medical treatment if necessary. All participants should have contact information on them in case of an emergency. Those who are with a group should have contact information for both their parents and the person appointed as chaperone.

BEFORE THE TOURNAMENT: TOUR THE PROPERTY

After your arrival it's a good idea to tour the property so everyone becomes familiar with the property's layout. Look for your main playing hall, skittles area, and Chess Control.

PICK YOUR SPOT: KNOW WHERE TO MEET

Determine where players should meet their groups or adult chaperone(s) after their games are finished. Remember, anyone who is lost should go immediately to Chess Control.

DURING THE TOURNAMENT: PLEASE MONITOR BEHAVIOR

Hotels as well as tournaments have safety rules that everyone must follow. Running in the halls, climbing on furniture or art work, playing outdoor games inside, such as throwing balls, is usually frowned upon and can result in injury or costly damages.

US Chess wants everyone to have a wonderful experience. You can help keep it positive by following the above recommendations. For more safety tips, see our video on YouTube (search for "Tournament Safety Tips from US Chess").

Photography Policy for National Scholastic Events

Photos and/or videos taken at US Chess national scholastic events may be published in the following manner: US Chess print publications; US Chess digital platforms including uschess.org, social media, and YouTube; and within press releases.

By attending a US Chess national event, photos and videos of you or your children at the event may be published in any or all of the above-mentioned media and devices at the sole discretion of US Chess. You are consenting to photographs being taken and shared through the above-listed platform(s) unless you expressly revoke your consent by notifying the US Chess Senior Director of Strategic Communication Daniel Lucas at dlucas@uschess.org.

Minors will not be identified by name in photo captions unless they are competing on one of the top boards or have won a championship. Championship-section winners are generally identified in our photo captions by first and last name and hometown.

Electronic Device Policy for National Events Organized by US Chess

The following policy has been reviewed and approved by the US Chess Scholastic Council and US Chess Executive Board.

Effective immediately, participants (upon starting their game) and spectators (where permitted) at tournaments directly organized by US Chess must not have on their person in the playing area any cell phone, smart watch, tablet, laptop, or other Internet-enabled device, except the following.

- Electronic scoresheets approved by the regulations governing the tournament.
- Other devices approved by US Chess prior to the event.

If a player with a game in progress is found to possess such a device, the game will be declared lost for the violating player, and the game will be submitted for rating purposes. A second such violation during the tournament will result in the same penalties, as well as removal from the tournament.

Exceptions to paragraph 2 may be specified for events covered by the Scholastic Regulations.

If a spectator is found to have such a device on his person, the offender will not be permitted to enter the playing hall for the remainder of the tournament.

If a player wishes to bring such a device into the tournament hall, the device must be turned off (not placed into “silent” or “airplane” mode) and placed either face-up on the table where the player has a game in progress, or placed into a bag that the player does not carry or open during the game in progress.

US Chess understands that players may not want to risk losing their devices. The recommended solution is to not bring them into the hall at all.

US Chess is not responsible for devices left in the playing hall.

Automatically exempt from this policy are the following.

- US Chess staff with badges for the event
- Tournament staff with badges for the event
- Other individuals with badges for the event or prior written approval from the US Chess Director of Events
- Any exceptions must be approved by the US Chess Director of Events, in writing, at least three weeks before the event begins.

To request an exception, contact the US Chess Director of Events at boyd.reed@uschess.org.

If the request involves a medical situation, additional documentation may be necessary. This allows US Chess to fully understand the situation and have enough time to ensure the proper accommodations.

Last edited August 31, 2019

Spectator Policy

In 2018, the Scholastic Council and the Executive Board approved changes to the Scholastic Regulations that updated rules for spectators at the following scholastic events:

- National Elementary (K-6) Championship
- National Middle School (K-8) Championship
- National High School (K-12) Championship
- National K-12 Grade Championships

With the change in policy, playing halls at scholastic events organized by US Chess are open only to the following people while games are in progress:

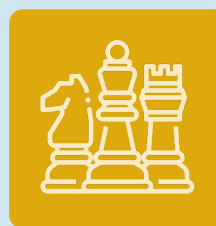
- Players with games in progress in that room
- Tournament staff
- Press and other attendees with badges authorizing their access

- Other persons directly authorized by the US Chess Director of Events

This means that parents, coaches, and other attendees who do not fall into the four categories above must leave the playing hall before the tournament director in charge of the playing hall will begin play. Once a player in that room has reported a result, that player also is considered a spectator and must leave the room for the remainder of that round. Parents and coaches should instruct their players who have completed games not to go back into the playing hall.

Attendees are strongly encouraged to use the skittles area both as a waiting room and as a meeting place after each round. Most exhibits and vendors will be housed there. Teams also can reserve a room at national scholastic events, but availability is limited and there is both a cost and a specific procedure for reserving one. Team room information will be linked on each tournament website. For parents and coaches who choose to wait in front of the main playing areas, US Chess has reconfigured its event setups to move most exhibits and vendors out of the hallways, thereby maximizing available space. Exits from the playing hall will be designated and clearly marked with signage, both inside and outside.

Please visit uschess.org, click on CLO, and search “Spectator policy” for further details. Penalties for violating this policy are at the discretion of the chief tournament director.



Need to miss a round?

If you need to miss a round, please report your absence at least one hour prior to the start of a round. If we don't know and you don't show, you will be dropped from the tournament! Even if late, let us know. It's not any fun getting paired and not having an opponent!

A maximum of one half-point bye is available in the first six rounds if requested by the start of the first round. Zero-point byes shall be available for all rounds and must be requested at least two hours before the start of the round they are requested for.

Scholastic Regulations update

Please note: the 2019-20 Scholastic Regulations added Regulation 19, which requires the use of a paper scoresheet provided by US Chess at the tournament. The entire Scholastic Regulations can be found at uschess.org. Click on the CLO logo, then search “Scholastic Regulations.”

New Scholastic Notation Regulations in Effect as of September 1, 2019

As US Chess pursues its goal to “increase the use of chess in education,” we need to remind ourselves that when scholastic players notate and review their games, they are engaged in a powerful literacy activity — one that compliments learning across the curriculum. It is also a gateway into the treasures of chess literature and history.

Notation provides a foundation for the critical feedback loop (play-review-study) that leads to improved understanding and appreciation of the game. It empowers players to support themselves in tournament disputes and share their games with others. Children who learn to notate for such personally compelling and practical reasons do not need to be “made” to write down their moves. They will do so willingly as part of their journey toward chess improvement.

What is more, quality notation can aid tournament directors in running events more smoothly and efficiently.

With these (and other) educational benefits in mind, the US Chess Scholastic Council made the following **scholastic regulations effective September 1st, 2019 beginning with the 2019-20 scholastic nationals** (see table at right).

We understand that raising notation standards will have the most impact on students with the least experience notating. For this reason, we have left notation optional for players in sections where proficiency cannot be assumed. However, we strongly encourage all chess players to learn to notate.

Just as there are “reluctant readers” at school, there are “reluctant notators” in chess. At a recent state scholastic championship, a coach noticed that one of his kindergarteners did not have a notation sheet or pencil but was seated to begin the round. When told to notate *because it is a rule of chess*, the student hemmed and hawed before offering a compromise: “Can I just write down my moves?” The coach asked what good that would do and the student replied: “Well, I only pay attention to my own moves anyway.” The coach and the student’s parent convinced him

Notation Regulations: A QUICK GUIDE

Notation is required in all sections of the following tournaments:

- **National Middle School (K-8) Championship**
- **National High School (K-12) Championship**
- **National Youth Action Championship**
- **U.S. Junior Open**

The following tournaments have different notation rules for different age groups, as shown below:

National Elementary School (K-6) Championship

K-1 Under 500 & Unrated	NO
K-1 Championship	NO
K-3 Unrated	NO
K-3 Under 700	NO
All other sections.....	YES

National K-12 Grade Championships

Kindergarten	NO
Grade 1	NO
All other sections.....	YES

All-Girls National Championships

Under 8	NO
All other sections	YES

Junior Chess Congress

Age 6 & under	NO
Age 8 & under	NO
All other sections	YES

that since spectators are not allowed in the tournament room, their only way of seeing the whole game would be if the student notated for both sides. The student proceeded to produce a beautifully notated thirty-plus move game.

To help parents and coaches prepare, the official notation sheets required for national events have been made available in advance and online so that coaches and parents can help students become familiar with the format.

New Awards at US Chess National Scholastics

US Chess has introduced new awards to be distributed at national scholastic events. These changes debuted at the 2019 National K-12 Grade Championships, which was our last national scholastic event for two years. Full implementation of these changes was interrupted due to the pandemic, but resumed beginning with the 2021 National K-12 Grade Championships. This article is intended as a reminder of the changes, as well as the deliberative process that went into their implementation.

What has been changed?

Starting in the spring of 2022, most individual awards at national scholastic events will be custom medals. This impacts the following events and sections:

- National High School (K-12) Championship — all sections
- National Middle School (K-8) Championship — all sections
- National Elementary (K-6) Championship — all K-6 sections and all K-5 sections

By the fall of 2022, we expect all individual awards at national scholastic events will be custom medals.

Also, the first place team trophy in each regular-rated section that awards a national championship title will be custom made as well. These trophies will continue to be the only team awards with the words “National Champions” in the engraving.

What do the medals look like?

The new individual medals are custom made, with bright finishes, and a unique design for every event. The front shows the logo for the event. The back has the US Chess logo engraved, the section, and the place. The lanyard for each medal is custom made for the specific event as well.

The top three medals for each section are gold, silver, and bronze. All other place medals are a copper color. The gold medal in the Championship sections bears the words “National Champion.”

Why was this change made?

There are several reasons for this change.

1. There had been a trend toward more and bigger trophies at national events. This had given way to a general sense of “trophy entitlement” — that everyone should get a trophy or an award. Most national level school-age competitions — even most competitions in general — do not work that way. The focus should be on the achievement and the effort, not the talisman.
2. Most school-age extracurricular competitions offer medals for individual achievement, and trophies for team achievement. This is true for athletics and academics.

3. US Chess has, for years, fielded complaints from parents about how difficult it is to get large trophies home. By switching to custom medals, players can wear their awards home, or to school. They still carry the same meaning and significance.

4. Of course, medals cost less than trophies. So, US Chess will save some money with the change. However, we want to use the savings to offer more features for everyone. For example, at the 2022 National Elementary, we plan to offer a seminar on chess in education. We will also have guest grandmasters offering two lectures each during the weekend, instead of just one. Finally, we have increased our number of DGT boards for broadcast — we had 12 before the pandemic, but we will now have 21! Improvements are possible in part because we can use some of the savings on awards to expand the offerings available to all.

How was this decided?

The idea was first discussed at the 2018 U.S. Open. Subsequent discussion among members of the Executive Board and Scholastic Council, along with Trophies Plus (the official provider of awards for our national scholastic events), and senior leaders of US Chess, took place between August 2018 and August 2019. At the 2019 U.S. Open, the Scholastic Regulations for 2019-2020 were proposed, and the Scholastic Council approved language permitting the awards change. The language was subsequently ratified by the Executive Board. So, this was a deliberate process, involving numerous parts of US Chess leadership, including significant input from the Scholastic Council, which is the primary advisory body for scholastic affairs.



Recent Winners

National Elementary (K-6) Championship

2019 K-6 CO-CHAMPIONS



FROM LEFT TO RIGHT:

James Oh (NY); Adi Murgescu (NY); Abinav Rajiv Mundayat (NJ); Vyom Vidyarthi (CA); AghilanNachiappan (CA); Evan Park (PA)

2019 K-6 TEAM CHAMPION



THE SPEYER LEGACY SCHOOL
NEW YORK, NY

PREVIOUS WINNERS, INDIVIDUAL, NATIONAL ELEMENTARY (K-6, K-5, K-3 & K-1):

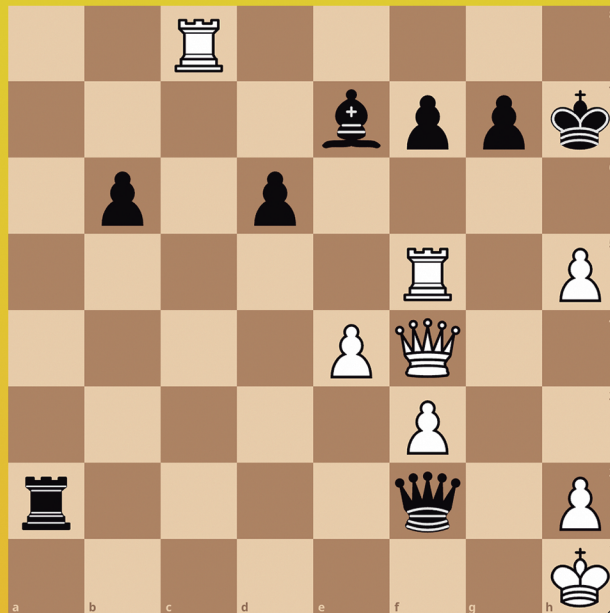
2017 K-6: Maximillian Lu, Jason Yuyang Wang, Gus Huston, Raghav Venkat, Sumit Dhar; K-5: Nico Werner Chasin, Luke Sicong Ye; K-3: Dimitar Mardov, Liam Henry Putnam; K-1: Steve Wongso, Andrew Jiang • 2018 K-6: Nathaniel Lande Shuman, Kevin Pan, Rithik Sai Polavaram, Rianne Ke; K-5: Nico Werner Chasin; K-3: Ronen Wilson; K-1: Rohan Rajaram • 2019 K-6: Vyom Vidyarthi, Abinav Rajiv Mundayat, Aghilan Nachiappan, Adi Murgescu, Evan Park, James Y. Oh; K-5: Cooper Oh; K-3: Omya Vidyarthi; K-1: Alexander Braun, Kyle Yiwen Wang • 2020 Canceled: COVID-19 • 2021 Canceled: COVID-19

PREVIOUS WINNERS, TEAM, NATIONAL ELEMENTARY (K-6, K-5, K-3 & K-1):

2017 K-6: Dalton (NY); K-5: P.S. 41 (NY), Mission San Jose Elementary (CA); K-3: Dalton (NY); K-1: Durham Academy (NC) • 2018 K-6: The Speyer Legacy School (NY), Dalton (NY), Mission San Jose Elementary (CA); K-5: P.S. 41 (NY); K-3: Dalton (NY); K-1: Mission San Jose Elementary (CA) • 2019 K-6: The Speyer Legacy School (NY); K-5: Joseph A. Williams Elementary (FL); K-3: P.S. 77-Lower Lab School (NY); K-1: Hunter College Campus School (NY) • 2020 Canceled: COVID-19 • 2021 Canceled: COVID-19

For complete 2019 results, visit <http://www.uschess.org/results/2019/elem/>

Solve the puzzle: mate in two for white.



Email the solution to online@chessacademy.com
and get two weeks of free chess classes!

Tell us the game too and get a free month!

The online club includes:

Semi-private lessons, Broadcast lessons, Tournaments

Plus events with people like Magnus and Judit Polgar!

chessacademy.com



Gold & Silver Affiliates

US CHESS would like to recognize and thank all of our Affiliates for their commitment and hard work.

For a full list of Gold and Silver Affiliates and all information on becoming a Gold or Silver Affiliate, please visit

www.uschess.org/content/view/7905/95



THANK YOU TO OUR ♥ BENEFACTORS ♥

Thank-you for being the sustaining force behind all our initiatives, and for making all of our programs possible.



For a full list of our Benefactors please visit

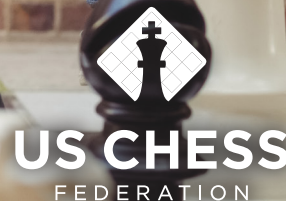
<https://new.uschess.org/benefactor-members>



GIVE CHESS AND CHANGE A LIFE

Your Tax-Deductible Gift to **AT-RISK YOUTH** and Title I schools provides **EVERYTHING YOUNG PLAYERS WILL NEED** to compete in local and national chess tournaments. To learn more, visit our website at <https://new.uschess.org/at-risk-youth>.

Every dollar counts! Make a gift today and **CHANGE A LIFE!**



Protecting Your Tournament, Always the Right Move.

Insure your next chess tournament with Front Row.

Chess tournament liability insurance available online, 24/7.

Starting at just \$100.

Get a free quote 24/7 and buy online:

<https://events.frontrowinsurance.com/us>



Chess Life and Chess Life Kids

Included with your US Chess membership!

All US Chess members have **free access** to digital editions of US Chess' award-winning magazines, **Chess Life** and **Chess Life Kids**.

Printed copies of **Chess Life** or **Chess Life Kids** can be added on to any membership for a nominal fee, currently \$9.35/year (12 issues) for *Chess Life* and \$4.75/year (6 issues) for *Chess Life Kids*.



U.S. WOMEN'S OPEN

NATIONAL OPEN



JUNE 8 – 12, 2022

INTERNATIONAL CHESS FESTIVAL

www.VegasChessFestival.com



NATIONAL OPEN

JUNE 8–12, 9–12, 10–12, OR 11–12

\$100,000 GUARANTEED PRIZE FUND

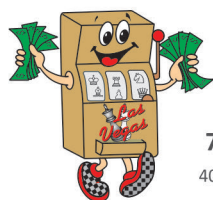
7 Rounds (Open 9) • 8 Sections • Top 3 FIDE Rated

40/90, SD/30 +30 • 3-day rounds 1–2 G/60 +10 • 2-day rounds 1–4 G/30 +5

Beginners Section with 3 Schedules of 6 Rounds Each Day

Open Section 9 Rounds in 5 days with FIDE Norms Possible

Winner is a US Chess National Champion and receives a replica of the Edmondson Cup



U.S. WOMEN'S OPEN

WEDNESDAY & THURSDAY JUNE 8–9

\$3,500 GUARANTEED PRIZE FUND

5 Round Swiss • FIDE Rated • G/90 +30

Winner is a US Chess National Champion and receives the Women's Open Cup



WALTER BROWNE MEMORIAL NATIONAL OPEN BLITZ CHAMPIONSHIP

SUNDAY JUNE 12 AT 10:30 P.M.

\$3,600 GUARANTEED PRIZE FUND

6 Double Round Swiss • G/3 +2

US Chess & FIDE Blitz Rated

Winner receives a replica of the Walter Shawn Browne Cup



INTERNATIONAL YOUTH CHAMPIONSHIP

JUNE 11–12

6 Round Swiss • 4 Sections by Age and Rating

Dozens of Individual & Team Trophies

Chess Merchandise Prizes Awarded in Each Section



Safety protocols or government regulations may require us to restrict spectators, limit attendance, or cancel some side events. Check our website for the latest information.

Grandmaster Simuls

OPEN TO ALL

THURSDAY 3:00 P.M.

OPEN TO AGE 14 & UNDER

SATURDAY 7:00 P.M.

Grandmaster Chess Camp

FOR ALL AGES

THURSDAY 10 A.M. – 6:00 P.M.

BLITZ & ACTION TOURNAMENTS

ACTION QUADS

THURSDAY 2:00 P.M.

YOUTH BLITZ (AGE 14 & UNDER)

FRIDAY 6:30 P.M.

8 PLAYER BLITZ SECTIONALS

FRIDAY MIDNIGHT

10-12 PLAYER BLITZ SECTIONALS

SATURDAY 10:30 P.M.

Free Lectures & Analysis

THURSDAY – SUNDAY

Youth Side Events (age 14 & under)

TROPHY TOURNAMENT

FRIDAY 10:00 A.M.

YOUTH BLITZ

FRIDAY 6:30 P.M.

PUZZLE SOLVING COMPETITION

SATURDAY 6:00 P.M.

YOUTH SIMUL

SATURDAY 7:00 P.M.



WESTGATE
LAS VEGAS

A short walk from The Strip with a convenient **on-site monorail station** for easy access to the rest of The Strip. Call 800-732-7117 and use group code **SVCF2R** for the lowest rates or reserve online at VegasChessFestival.com/hotel.

Win Free Hotel Stay During Chess Festival - reserve your room early for a chance to win your stay for free. Earlier reservations have more chances to win!



TROPHIES PLUS



115 MAIN STREET, BREDÁ, IA 51436
800-397-9993 | TROPHYMAN@TROPHIESPLUS.COM
WWW.TROPHIESPLUS.COM

***PROUD SUPPLIER OF THE NATIONAL SCHOLASTIC TOURNAMENT
AWARDS FOR US CHESS SINCE 1999***

PROUD SPONSOR OF THE 2007-2022 ALL-AMERICA TEAMS FOR US CHESS

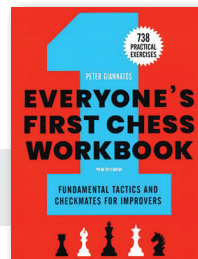
VISIT THE US CHESS SALES
CHESS SHOP IN
**GREATER COLUMBUS
CONVENTION CENTER**
DELAWARE A-B

Friday: 11am - 8pm
Saturday: 8am - 8pm
Sunday: 8am - 6pm

BOOK SIGNING

FM Peter Giannatos

Sunday,
May 15th
at 11:00AM



BOOK & BOARD SIGNING

Jennifer Shahade

Sunday,
May 15th
at 12:00PM



**ONLINE COUPON
ONLY!**

SAVE 10%
Use Coupon Code:
ELEMENTARY

Expires 6/30/2022
Discounts can not be combined.
Excludes clearance, shopworn,
and imperfect items or
otherwise marked



Get Your Free Copy in the Chess Shop Today!

Future US CHESS Events

2022

U.S. Junior Chess Congress

JULY 1-3

Renaissance Orlando
at Sea World
Orlando, Florida

U.S. Junior Open & U. S. Senior Open

JULY 22-24

Elmhurst University
Frick Center
Elmhurst, Illinois

U.S. Open

JULY 30-AUGUST 7

Westin Mission Hills
Golf Resort & Spa
Rancho Mirage, California

U.S. Masters

NOVEMBER 23-27

Hilton Charlotte
University Place
Charlotte, North Carolina

National K-12 Grade Championships

DECEMBER 9-11

Gaylord National Resort
& Convention Center
National Harbor,
Maryland

2023

National High School (K-12) Championship

MARCH 31-APRIL 2

Washington Hilton
Washington, DC

National Middle School (K-8) Championship

APRIL 21-23

Kalahari Resorts &
Conventions
Round Rock, Texas

National Elementary (K-6) Championship

MAY 12-14

Baltimore
Convention Center
Baltimore, Maryland

U.S. Open

JULY 29-AUGUST 6

DeVos Place
Grand Rapids, Michigan

National K-12 Grade Championships

DECEMBER 15-17

Hyatt Regency Orlando
Orlando, Florida

2024

National Elementary (K-6) Championship

APRIL 26-28

Greater Columbus
Convention Center
Columbus, Ohio

National Middle School (K-8) Championship

MAY 10-12

Hyatt Regency Atlanta
Atlanta, Georgia

U.S. Open

JULY 27-AUGUST 4

Sheraton Norfolk
Waterside Hotel
Norfolk, Virginia

National K-12 Grade Championships

DECEMBER 6-8

Gaylord National Resort
& Convention Center
National Harbor,
Maryland

2025

SuperNationals VIII

MAY 9-11

Orange County
Convention Center
Orlando, Florida

2026

National High School (K-12) Championship

MARCH 27-29

Sheraton Grand Chicago
Chicago, Illinois

Please visit uschess.org/national-events-calendar/ for details on all events



US CHESS