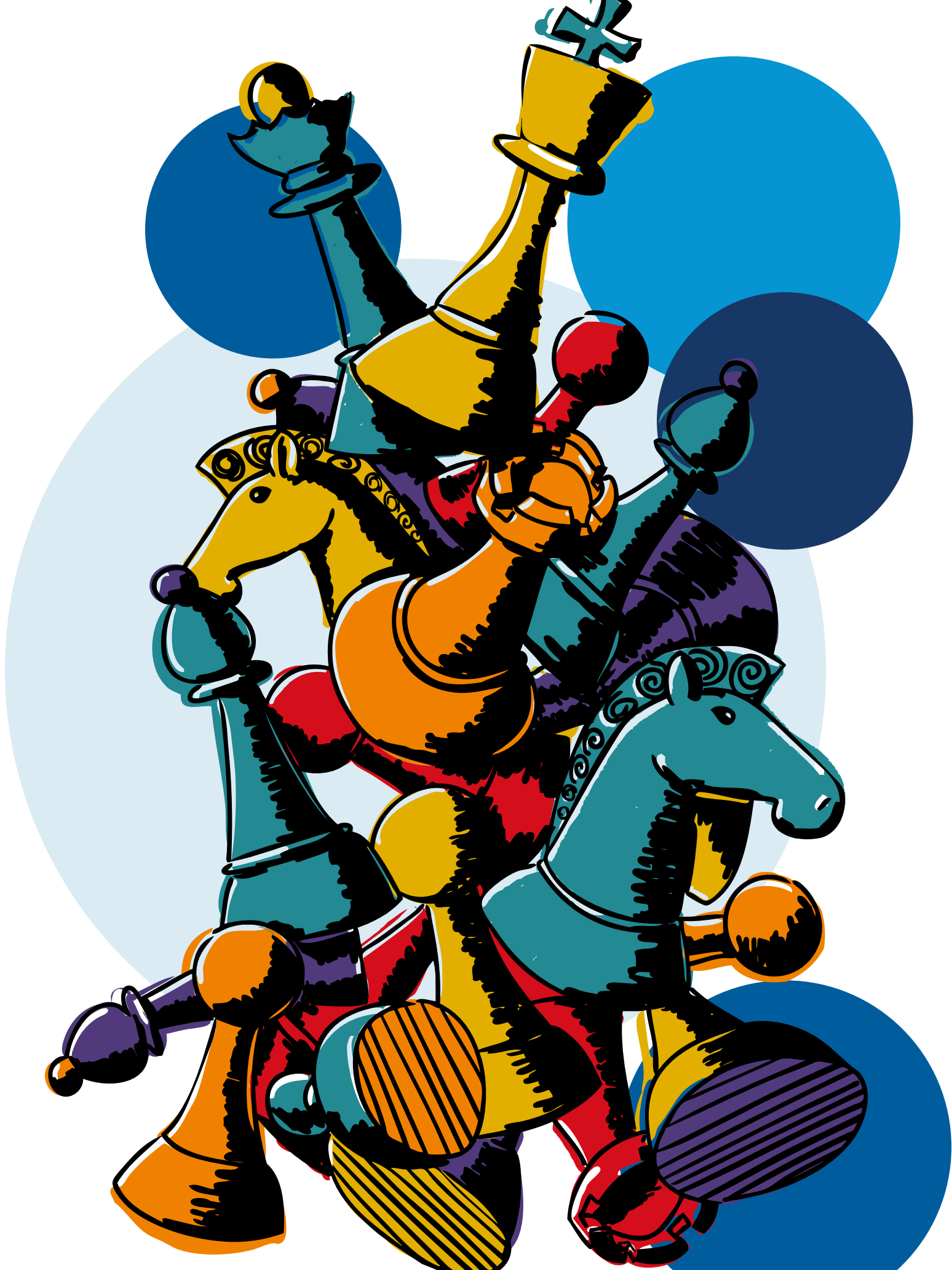





US CHESS
FEDERATION

**ANNUAL
REPORT**

2022



Mission/Vision.....	02
Executive Board.....	03
President's Report	04
Executive Director's Report	06
Vice President Of Finance's Report	08
US Chess Donors	10
US Chess Programs.....	14
Award Recipients.....	18
National Champions.....	30
US Chess Financials.....	40



US CHESS MISSION

Empower people,
enrich lives,
and enhance
communities
through chess.

US CHESS VISION

Chess is recognized as
an essential tool that
promotes inclusiveness
and benefits education,
rehabilitation,
recreation, and friendly
competition.

US CHESS 2022 GOALS

- Expand the educational, social, recreational, and rehabilitative applications of chess.
- Increase the visibility of chess on mainstream communications channels.
- Develop the depth and breadth of our partnerships.
- Use chess to increase opportunities for under-represented segments of society.
- Continuously improve internal operations and member services.

US CHESS CORE VALUES

- Education. We promote the transformative power of chess for lifelong personal growth.
- Customer service. We endeavor to be responsive, adaptive and proactive in providing services to our customers.
- Excellence. We strive to be the best we can be as an organization and in service to the game.
- Integrity. We honor, preserve, and promote fair play.
- Inclusion. We believe everyone has a seat at the chess table.
- Love of the game. We embrace chess as a historic and iconic game, and we celebrate its history, growth, and evolution in our activities and services.



(L-R): Unruh, Fong, Day, Meyer, Pryor, Hoffpauir, Fernandez, Hater, Bauer


PRESIDENT:

Mike Hoffpauir
mhoffpauir@aol.com

VICE PRESIDENT:

Randy Bauer
rbauer.chess@gmail.com

VICE PRESIDENT OF FINANCE:

Chuck Unruh
vpfinance@uschess.org

SECRETARY:

Fun Fong
secretary@uschess.org

MEMBER-AT-LARGE:

David Day
DavidChessDay@gmail.com

MEMBER-AT-LARGE:

John Fernandez
john.fernandez@gmail.com

MEMBER-AT-LARGE:

David Hater
dhater1@aol.com

MEMBER-AT-LARGE:

Kevin Pryor
pryorkevin@yahoo.com

EXECUTIVE DIRECTOR:

Carol Meyer
carol.meyer@uschess.org

This is the 2021-22 Executive Board. For 2022-23, Randy Bauer is President (president@uschess.org), Kevin Pryor is Vice President (vp@uschess.org), and Mike Hoffpauir is a Member-at-Large. The other positions remain the same.

US CHESS EXECUTIVE BOARD

The US Chess Federation (US Chess) is the official governing body and non-profit 501(c)(3) organization for chess players and chess supporters in the United States. Our mission is to empower people, enrich lives, and enhance communities through chess. Our vision is that chess is recognized as an essential tool that promotes inclusiveness and benefits education, rehabilitation, recreation, and friendly competition. US Chess represents the United States in the International Chess Federation (FIDE), connecting our members to chess players

around the world. Founded in 1939 with the merger of the American Chess Federation and the National Chess Federation, US Chess peaked at more than 97,000 members, but membership is currently recovering due to COVID-19.

In normal years, US Chess sanctions and rates over 12,000 tournaments and over 800,000 games. We host over 50 national championships and award titles to both amateurs and professionals, ranging from elementary school students to senior citizens.

PRESIDENT'S REPORT

Transitions

The world of US Chess changed significantly after the 2021 Delegates Meeting. First, in a Special Delegates Meeting on March 23, 2022, we authorized the sale of the US Chess headquarters building in Crossville, Tennessee. That process is now finalized. We also completed the move to St. Louis, Missouri, a city that offers tremendous potential to further implement the US Chess mission. We look forward to discovering new opportunities and working with many of you to bring them to fruition. Director of Member Services Korey Kormick is already onsite at our new headquarters in Union Station. We are open for business!

Transitions can be bittersweet. At this year's awards ceremonies, we celebrated Crossville as our "Chess City of the Year" in recognition of Crossville's many years as our home. Crossville will forever be remembered as a wonderful and important part of our history. So once again, to the people of Crossville and chess players across the great state of Tennessee, we thank you for your open arms and friendship.

Second, I applaud the Delegates for implementing the Executive Board structural changes conceived and recommended by the Governance Task Force (GTF) in 2020. The Executive

Board is already reaping benefits from this new "stability in leadership." Our current board members will continue to serve together for another year, and this leadership stability brings a level of understanding and trust among board members, thereby enhancing the efficiency of our activities. And, as the GTF's changes continue to roll-out over the next few years, we'll see this stability become part of our DNA.

Third, the past year has seen a return to over-the-board (OTB) chess across the country, creating a whole new set of considerations for US Chess, particularly regarding our scholastic national championships. It is safe to say that everyone can appreciate the difficult decisions that had to be made — and continue to be made — as a result of the ongoing pandemic. I wish I could promise that such decisions are going to become much easier. My perception is that players are, at least for the moment, becoming much more comfortable traveling to local/regional events. A bit more hesitancy seems to creep in when it comes to national-level events. I expect it will take a little more time for this hesitancy to subside. However, I (for one) am looking forward optimistically to a great 2022-23 national season.

US Chess has come through the pandemic in very good shape. I tip my hat to VP of



Finance Chuck Unruh, Executive Director Carol Meyer, and US Chess Senior Accountant Debra Robison for applying their expertise and successfully managing our finances through some rough waters. Thanks to them, the financial status of US Chess is solid.

Last year, when my Executive Board colleagues elected me as president, I informed them that it would be my last year as president — not because of other commitments, but because of my own belief that changing presidents every two or so years is for the good of the organization. I will continue to serve on the Executive Board as a member-at-large, and I have every confidence that our organization will be in good hands under the leadership of current Executive Board President Randy Bauer.

It has been an honor to serve as your president for the past two years. Thanks to all of you for your service to our beloved game and for your dedication to US Chess.

Mike Hoffpauir
Mike Hoffpauir, President

US CHESS by the **numbers**

US Chess membership is **CLOSE TO 95,000.*** That number includes:

105

GRANDMASTERS

166 INTERNATIONAL
MASTERS

13,000* FEMALE
MEMBERS IN US CHESS

76,000*
RATED PLAYERS

728
MASTERS

1680
EXPERTS

SENIOR MASTERS

241

3 US CHESS MEMBERS ARE
CENTENARIANS

29 WOMEN
INTERNATIONAL
MASTERS

13
WOMEN
GRANDMASTERS

845,249*
RATED GAMES

PLAYED IN 2019, MOST RUN BY LOCAL CLUBS

12,341*
TOURNAMENTS
HELD IN 2019

71,000,000** estimated number of chess enthusiasts in the U.S. who have not yet joined US Chess.

* Pre-COVID-19 numbers we are rapidly approaching again. **YouGov study

EXECUTIVE DIRECTOR'S REPORT



Testing Our Mettle

▶ As we conclude another year of pandemic uncertainty, political upheaval, and a war that has captured our hearts and attention, US Chess has moved forward while adjusting to a different reality for the organization. As I write this, I am reminded of the Greek concept of *kairos* as a centering theme for how we navigated the ongoing impacts of the pandemic, economy, democracy, and the polarization of our society. I appreciate everyone's understanding of the intricate balancing act we do at US Chess to meet the different needs of so many.

When we decided to move forward with the 2021 U.S. Open, we were in

**US Chess is
grateful for the
warm hospitality
extended to us
by the City of
Crossville.**

a pandemic lull. In the days leading up to that event, the Delta variant was beginning its surge. We instituted event precautions — masks, vaccination requirements, hand sanitizer, and cleaning of boards/pieces between rounds — to mitigate against an unseen foe. With more than 1,000 people cycling through the nine-day event, we were fortunate to have escaped the worst effects of this enemy.

As we headed into another pandemic-laden school year, we knew that many local programs would be unable to resume their chess activities. Restrictions imposed by schools on visitors and programming, varied local rules for how people gathered, and restrictions on travel and after school activities would impact our affiliates, members, and scholastic event attendance. And then Omicron emerged, triggering precautions that

Mid-year, the US Chess Executive Board formalized its intention to relocate the organization's headquarters to St. Louis, Missouri. That decision, which had been under consideration for some time, required many inputs, including from the Board of Delegates. During a Special Delegates Meeting in March 2002, the Board of Delegates authorized the Life Member Asset Trust to sell the headquarters building. The sale of the Crossville headquarters closed in August, and the physical move took place in mid-July into leased space in downtown St. Louis. As we depart our home for the past 17 years, US Chess is grateful for the warm hospitality extended to us by the City of Crossville during our tenure there.

Despite the challenging environment for OTB chess tournaments, 2021-2022 was a year of renewal. We saw the return to rated OTB play across the country, with some annual events setting attendance records. While the overall number of rated games (OTB and online) was 81% of the 2019-2020 year (i.e., the last "normal" year), we saw rated play returning to its OTB roots, with a 767% increase in rated OTB games this year over last.

In addition to people returning to rated play, we also saw a rebound in membership. As of May 31, US Chess had increased its membership by 52% from the same date a year ago. With the pandemic's continuing impacts, we are thankful for the ongoing commitment of our members to US Chess and are excited that they want to play again after being sidelined for two years.

The past year allowed US Chess to rebuild its nascent program serving at-risk youth. We successfully provided 1,075 chess sets and 660 memberships to Title I school programs. In addition, we sponsored a chess team of students from Title I schools to attend the 2022 National High School Championship.

You can hear the players share their chess stories at [youtube.com/watch?v=FTV4QYKyR04](https://www.youtube.com/watch?v=FTV4QYKyR04). Finally, we are thrilled to touch the lives of refugee and new immigrant students by bringing chess to their classrooms.

The US Chess Women's program rebounded to sponsor girls' club activities at the four scholastic national events held during the year. While its online programming has been reduced due to the resumption of normal activities, some online programming occurred during the past year and included special guests like GM Judit Polgar and other top players. The Women's program recently awarded new grants to US Chess affiliates in support of local programs that bring chess to girls and women. We are grateful for the continuing support of the Women's program by the Saint Louis Chess Club.

The past year saw a re-focusing of our Senior program, tapping new leadership to carve a vision for the future. The Senior Committee encouraged US Chess affiliates to again take part in the Alzheimer's Association's Longest Day activities, raising money to support research and local services to individuals and families living with Alzheimer's disease. Moving forward, the program will be reaching out to build programs that serve older adults in the communities they frequent.

Looking ahead to 2022-2023, I see US Chess continuing its recovery. I see the resurgence of chess among our youngest players, more OTB events across the country, and greater support for chess and the benefits it provides for players of any age. One thing I know is certain as I look forward: the only thing that is constant is change.

Warmest regards,



Carol B. Meyer, Executive Director

allowed us to move forward safely with our four scholastic national events. We are grateful to those who were able to come, either individually or with their schools, so that the history of scholastic national events could continue to be built. While attendance was significantly lower this year, the work of the US Chess Executive Board and their excellent financial stewardship allowed us to weather this reduction in attendance.

VICE PRESIDENT OF FINANCE'S REPORT

Financial Recovery, Our Mission Expands, and the Pandemic Subsidies: The Unaudited 2021-22 Financial Report



US Chess' unaudited financial statements indicate another year of surplus. Last year's final audited result was a statistical oddity when an expected small surplus snowballed to \$1,066,410, due in large part to US Chess receiving a Paycheck Protection Act loan that was forgiven in the last days of the fiscal year. This fiscal year posts solid projected results with the return of near-normal revenue from membership dues. Although not the record surplus of last year, fiscal 2021-22 is a return to normalcy and continued financial health in support of the longer-term US Chess mission.

US Chess is over 80 years old, yet had no financial history comparable to the recent pandemic. The pandemic threat halted over-the-board tournament competition. US Chess membership numbers and revenues significantly decreased by 30% during the previous fiscal year. Forecasts for membership revenue varied by

hundreds of thousands of dollars at the beginning of the 2020-21 year. However, the budget forecasts for membership revenues were met during last year and membership dues revenue increased to pre-pandemic levels of approximately \$2M. The total is a \$400K increase year over year based on preliminary May 2022 financial statements.

The financial recovery is on track for the next fiscal year as the pandemic subsidies. There have been setbacks, particularly with significant shortfalls in participation at the recent national scholastic events. In general, school chess clubs were disrupted for the last two years. National scholastic events have a significant impact on earnings but also are a significant cost center. All in all, the US Chess revenue stream has diversified in the last decade.

In the last two years, dividends and distributions from investments have

become another source of revenue. Fiscal 2020-21 was a stellar year with approximately \$200K of equity and dividend gains. Meanwhile, rising interest rates have dampened market returns during the last year. With the public markets off almost 20%, US Chess portfolios have lost mid-single digits of total value. The financial and investment committees manage the accounts with a goal to meet Endowment and Life Membership expenses from dividend distributions. Investment dividends are expected to surpass \$100K in the upcoming year.

Financial history and data in the expanded mission of US Chess are relatively recent. Some parts of the membership dues revenue stream offer comparisons to past years. Of particular notice is the growth in Life Membership sales, with 108 new life members in the last fiscal year. With new income sources, a good operational cash balance, all bills

**US Chess
is financially
very solid and
stable.**

paid, and only internal liabilities, the US Chess financial focus turns to the net value of the membership organization. The net assets of US Chess continue to grow.

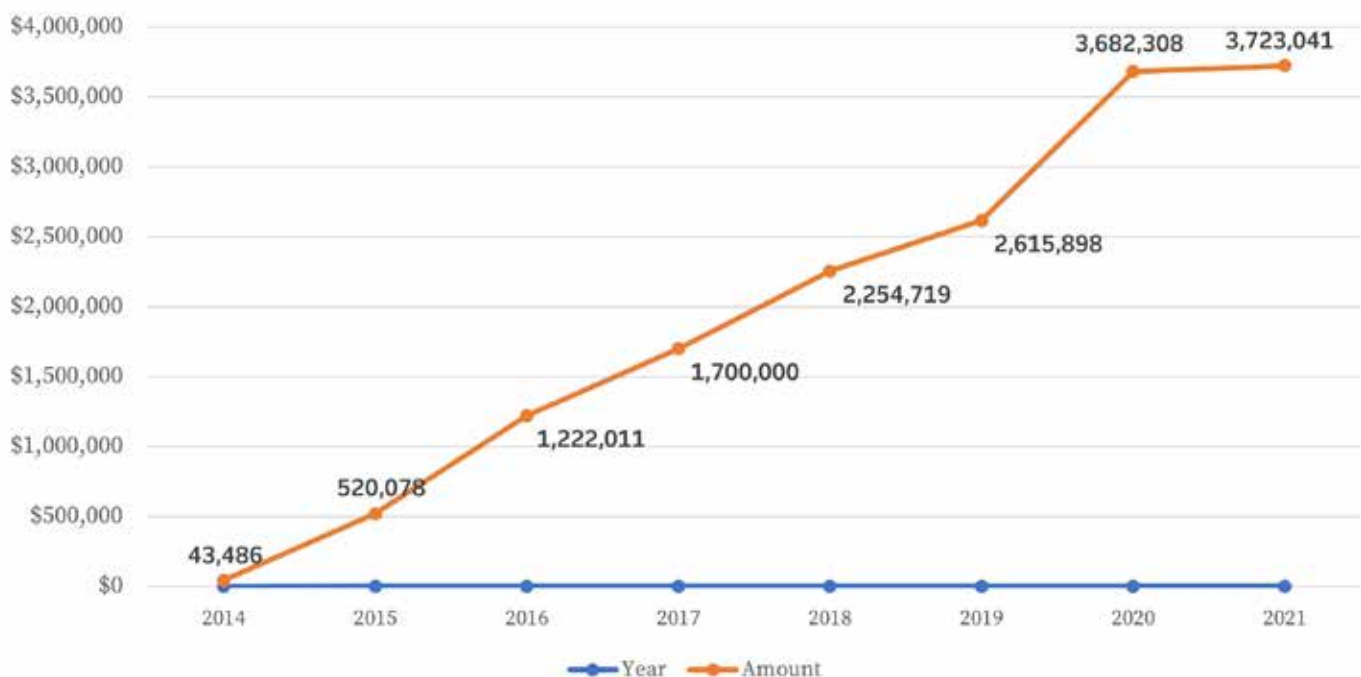
In summary, US Chess is financially very solid and stable. We are financially prepared to meet the challenges of the expanded mission in the upcoming year. More financial detail and final numbers for fiscal year 2021-22 was posted in November on the website. During the annual Delegates Meeting at the U.S. Open, the finance teams discussed the year-end audit and upcoming budget forecasts in a two-hour in-person meeting on Friday, August 5th.

The US Chess financial team appreciates the dedication from staff, committees, trustees, leadership, sponsors, tournament directors, and the many other volunteers who make US Chess a financial success, even during a once-in-a-lifetime pandemic.

Chuck Unruh

Chuck Unruh, Vice President of Finance

**US CHESS
YEAR END NET ASSETS**



US CHESS DONORS

2021-2022

Due to space limitations, only donors of \$50 or more are listed from the most recent fiscal year. Every gift to US Chess plays an important role in continuing our mission to *"Empower people, enrich lives, and enhance communities through chess,"* and we are grateful for each and every donation. US Chess is a 501(c)(3) nonprofit organization. All donations to US Chess are tax deductible. If you would like to make a donation to US Chess, please visit us at uschess.org/donate. We also thank those who have donated to US Chess using payment methods offered through third-party chess events or various social media platforms. We regret being unable to recognize those donors individually.

FRIENDS OF US CHESS \$50+

Arnisa Abazi	Ruslan E. Boichev	Charlotte Clymer	Robert Elson
Christopher Abissi	Robert Boland	Daniel Cohen	Maureen Empfield
Lynn Abrahamson	Laurence Bonsack	David Cohen	Austin Ene
Sergio Abreu	Gabriel Borges	Julian Colville	Raymond Erickson
Patrick Adams	Dan Bourla	Rory Conolly	Richard Ernst
Doyle Akin	Barry Brandt	Myron Cook	Nevo Faitelson
Mark & Donna Alarie	Bruce Brandt	Christopher Coon	Sony Feinberg
Joe Alexander	Syler Braudis	Joseph Coppola	John Fernandez
Robert Anderson	Stephen Breen	Lawrence Cudlitz	Donald Field
Cyrus Anderson	Bruce Brodinsky	Michael Cummins	Robert Florian
<i>Anonymous</i>	Jeffrey Brown	Emmanuel Dalmacio	Sabina Foisor
Rick Armagost	Anthony Brown	Vir Datt	Norman Forsythe
Robert Armstrong	Tim Brzeczek	Charles Davenport	Madeleine Francis
Justin Arnold	Niklas Buckingham	Jeffrey Davidson	Mark Fraser
Yaw Asanta	John Burchfield	Chuck Davis	Asher Frederick
Liza Bajarias	Mitch Burdorf	Joel Davis	David Garrett
Richard Baldock	David Burgess	Cross De Lairre	MacDonald Gerald
Baltimore Program	Adolf Busse	Denise Dearing	George Gillespie
Alex Bardakh	Jesse Butts	Charles Deknatel	Anna Ginzburg
Frank Barrett	Alan Byron	Vladimir Diagilev	Robert Gislason
Irvin Barry	The Cafe Family	Devin Dingler	Gregory Goellner
Ranae Bartlett	Kyle Cambra	Peter Dollard	Charles Goldsmith
Robert Basalla	Anthony Campillo	Edward Dowdy	Lauren Goodkind
Tommy Bates	Robert Carey	Tom Dowse	Stephen Goodman
Kenneth Bearman	Elizabeth Carlson	E. Steven Doyle	Herbert Gowen
Tom Beckman	Scott Carpenter	James Drebenstedt	Lawrence Gray
Claire Benoit	Domenico Carpin	Michael Dreher	Kevin Greene
Leonid Bensman	Isaac Carraway	Bernard Drerup	Andrew Greenlee
Lee Berk	Alwyn Chao	Luke Drumbl	Jamie Grigsby
Steve Bernhardt	Yu Chen	John David Dusenbury	Todd Guthrie
Bruce Betzer	Romana Chisu	Jeffrey Dvinoff	Danforth Hagler
Jim Blevins	David Chu	Peter & Karen Dyson	Roger Hale
Stephen Boardman	Kyle Clayton	David Eklund	Carl Hamry

Theo Haring	Galina Korsunsky	Peetak Mitra	Hemachandra &
John Hartmann	Alex Kostovetsky	Dylan Mize	Gnanadatta Rambhe
Nathan Hatcher	Edward Kotski	Radames Montero	Sreedharrao Ravinutala
David Hater	Panos Kyriakou	James Moon	James Rawson
Charles Haunschild	Luis La Torre	Matthew Moore	Douglas Reed
Keith Haywood	Michael Labac	Luciana Morales	Boyd Reed
Cathleen Heintz	Cario Lam	Timothy Morley	Louis Reed
Stacey Helvey	Thomas Landvogt	Bob & Barbara Moverman	Dennis W. Reich
Gary Henderson	Richard Laura	Brian Mullis	James Reichmuth
Lewis Henry	Frank Lawrence	Analaya Muneepeerakul	Bartley Reitz
Alan Hodge	Yvan Lazarev	Ellena Muresan	Mark Reynolds
Jason Hofferle	Aleksandr Lenderman	Philip Mwashe	Robert Reynolds
Christopher Hoffman	David Lewis	Arthur Nagel	Joseph Rizzo
James Holder	Weijie Li	Johji Nakada	Jacques Robichaud
Robert Hollenhorst, Jr.	Robert Liberman	Brenda Nardi	Tobias Robison
Jim Hollingsworth	Myron & Rachel Lieberman	Gautam Narula	Jose O. Rodriguez
Paul Hollingsworth	Richard Lindberg	Philip Neeley	David Rohlfing
Dorothy Holt	David Littell	Vinita Nelson	Charles Rooney
Randall Hough	Adeline Lo	Rick Neuenschwander	The Rosenbaum Family
Thomas Hupp	Albert Lopez	Robert Newbold	Alonzo Ross
Robert Hux	Mary Louise	Susan Noden	Szymon Rudowski
Robert Irons	Bruce Lowe	Bryan Norman	Thodore Sadriyoun
Geoffrey Isaak	Robert Lynch	Robert Nunnally	Shaunak Sailer
Mike Ivanov	Sean MacAodha	Charles Nunziata	Michael Sakarias
John Jaffray	William Macomber, Jr.	Alex & Jeff O'Brien	Michael Salvino
Alan Jeeves	Kishan Madamala	Robinson O'Brien-Bours	Dominic Salvino
Michele Jepson	Ronald Maddalena	Brian O'Hara	John Sbrolla
Sean Jesinkey	Russell Makofsky	Alex Onischuk	Stephen Scala
Benjamin Johnson	Harvey Manekofsky	Eric Osgood	Brian Scanlon
Mark Johnson	Charles Marino	Timothy Otto	Jan Peter Schmidt
Steve Johnson	Tom Martell	Thomas Pagano	William Schreiber
Benjamin Joseph	Natascha Martens	Nathaniel Page	Michael Schulte
Frederick Judson	Melinda Matthews	John Papianou	Randall Sears
Timothy Just	Daniel Mattson	David Parker	Carl Seastrum
Arthur Kade	Joanne McAndrews	John Parker, Sr.	Robert Secino
Hubert Kaplan	William McClain	Ramon Paterno	Daa'im Shabazz
Brian Karen	John McClester	Michelle Patton	Jonathan Shacter
Rianne Ke	Charles McCormick	William Paxton	Howard Shader
Bradford Keiller	Timothy McGibbons	Darrell Pelan	Greg Shaffer
James Kelley	Jesse McNulty	Stanley Perlo	Jennifer Shahade
Robert Kellner	Sean McPhail	David Peterson	Paul Sherman
Brad Kellum	James Medvedeff	Vasilis Petropoulos	Nathaniel Shuman
Timothy Kelly	James Mennier	Robert Pociask	Edward Silakowski
Scott Kenyon	Neal Meyer	Ira & Kate Pohl	Thomas Simpson
Vedmanvitha Ketireddy	Bruce Miller	Rahul Pothabathula	Jill Sinnott
K.N. King	Mark Miller	Baron Powell	May Siu
David Klatte	Robert Miller	Robert Probasco	David Sogin
Michael Koelsch	Jim Miller	Kevin Pryor	Michael Somers
Korey Kormick	Michael Miller	Yuniesky Quesada	Joseph Sperino
Mary Korn	Michael Mindham	David Rakowitz	Jay Stallings

DONORS

Roman Starsky
William Stavi-Raines
Frederick Steele
Eric Stenner
Bo Stern
Jordana Sternberg
Albert Strickland
David Stuart
Michael Styler
Martin Sullivan
Michael Sydnese
Karl Sydow
James Takagi
Frank Tamura
Guy Tardanico
Jerome Taylor
Ricky Taylor
John Thorburn
Harmon Throneberry
John P. Tierney

Ronald Toifel
John Toivonen
Melvin Tooker
Michael Trettel
Donald Twombly
Paxton Ullerich
Michael Urbonas
Vernon Vail
Bonnie Valant-Weiss
Michele Veiga
Charles Vekert
Eric Vigil
Oeyvind Vik
Joe Vilaro
Frank Vogel
John Walsh
Daniel Wanner
Travis Waters
John L. Watson
Derrick Watson

Wayne Weil
Mark Wegner
Michael Werner
Benton Wheeler
Clark Whelton
Robert Whitney
Dana Wiggins
Ira Wilkow
Joseph Williams
Russell Wilson
Richard Wilson
Walter Winarski
Bernard Wojnowski
Kwan Wong
Jameson Wong
Frederick Woyach
Robert Wynn
Shuguang Yan
Brian Yang
Mark Yankee

John Yates
Edmund Yee
Jeff Yoder
Karla Young
Christopher Zarcone
Laura Zayas
Evelyn Zhu

The Chen Family Fund
Coldwell Banker Wallace
Realtors
The Hammond Family
Foundation
The Illinois Chess Association
The International Academy
of Chess
Panorama Global Fund
The Warshaw Family
Foundation

CUMULATIVE GIVING

BRONZE \$1,000 - \$4,999

Anonymous
Robby Adamson
Jason Akin
Dawn Bagley
Arthur Barlas
Mark & Paula Bates
Randy Bauer
Michael Belovesick
Arunkumar Bindingnavile
Robert Borel
William H. Brock
Chris Bunch
John Cakars
Charles Chamberlain
Robert Cousins
Jonathan Crumiller
Edward & Diane Daley
David Day
Paul DeCamp
Richard Fields
The Firestein Family
Michael Fry
Todd, Connie & Gabriella
Germano

Zachary Gilstein
Sherlock & Stacey Grigsby
Francisco L. Guadalupe
Ariel Hamlin
Anthony He
Bryce Heinz
Jean Hoffman
Michael Hoffpauir
David Hutchinson
Ravi & Kshamta
Jammalamadaka
Carol Jarecki
Donald Johnson
Michael Khodarkovsky
Vincent Kreutz
David Lazarus
Richard Lenhart
Alan Lindy
Jennie Liu
Wade Maxwell
John McCrary
Michael McDermott
Kent McNall
Robert Messenger
Carol Meyer
Robert Morris

Hans Niemann
Akiva Notkin
Alex O'Brien
Terry O'Dwyer, Ph.D.
Andrew Okun
Scott Parker
William Perry
Nakul Ramaswamy
Mr. & Ms. Marc Rotenberg
Ernest Schlich
Vilya Schuschel
Ruthvik Singireddy
Thomas R. Sloan
Hal Sprechman
Aaron Straub
Mary Trautmann
Phil Trautmann
Selden Trimble
Andrew Weiner

Amazon
ABCO Automation, Inc.
Bank of North Carolina
The Cemala Foundation, Inc.
Chess.com

The Community Foundation
of Greensboro
Creative Snacks Co., LLC
Detroit City Chess Club
FIDE
The Franklin Conklin
Foundation
PayPal Giving
The Unruh Family Trust

SILVER \$5,000 - \$9,999

Anonymous
Alexandra Botez
Kimberly Doo
Levy Rozman
John Walton

The Benevity Fund
Chess Helps and The Pawn
Initiative
Internet Chess Club (ICC)
Stearns Financial Group
Susquehanna International
Group, LLC
YMCA Greensboro, Inc.

GOLD

\$10,000 - \$24,999

Anonymous
Donald & Judith Dean
Herbert A. Dropkin
Daniel Ginzburg
Dan Heisman
Kim Jones
Aleksandr Mashrabov
Michael Nietman
Ian Silverstone
Charles (Chuck) D. Unruh

*The Marc Haas Foundation
The Nearing Charitable Trust
The Twitch Community
The VF Foundation*

PLATINUM

\$25,000 - \$49,999

Anonymous
Dewain & Sue Barber
Lin Johnson
David H. Raymond

PARTNERS

\$50,000 - \$99,999

David & Maureen Grimaud
Dane E. Hinrichsen
Richard & Barbara Schiffrin

*Kasparov Chess Foundation
The U.S. Chess Trust*

PATRON'S CIRCLE -

\$100,000 - \$249,999

Anonymous
Dr. Herbert B. Jacklyn

Two Sigma Investments, LLC

PRESIDENT'S COUNCIL

\$250,000 - \$499,999

Estate of George & Anne Chamberlin

FOUNDERS CLUB

\$500,000 - \$999,999

1939 SOCIETY

\$1,000,000+

John D. Rockefeller V
Dr. Jeanne & Rex
Sinquefeld via *The Saint Louis Chess Club*

LEGACY SOCIETY

Randy Bauer
George & Anne Chamberlin
Herbert A. Dropkin
Charles Greger
Dane E. Hinrichsen
David Hutchinson
Dr. Herbert B. Jacklyn
Kim Jones
Myron & Rachel Lieberman
The Nearing Family
Phil Trautmann
Chuck Unruh

LIFE BENEFACTOR MEMBERS*

Paul M. Albert, Jr.
Mark Randall Bates
Randy Bauer
Jim Bedenbaugh
Michael Belovesick
J. E. Blackwood
Robert J. Borel
Thomas E. Boyd
Joseph H. Boyle
C. Martin Bradford
John J. Brendel
Kate Canessa
David E. Carter
Fabiano Caruana
Carl Cohen
Bill N. Costaras
Jonathan B. Crumiller
Jeffrey Davidson
Martin Dean
Kenneth Duffy
E. Tomlinson Fort

Michael Fry
Gregory Gliner
William Goichberg
Bernard Goodman
Calvin Halsey
Robert E. Hux
David Kaplan
David M. Kochman
Vincent Kreutz, Jr.
David Lazarus
Andrew Lerner
Christopher Lewis
Jennifer S. Liu
Edward Martin
William McClain
John McCrary
Kenton McNall
Robert D. Messenger
Andrew Metrick
Timur Milgrom
David C. Miller
Parker G. Montgomery
Ross Nickel
Bernard Novatt
Scott R. Parker
William E. Perry III
David H. Raymond
Timothy P. Redman
Danny Rosa
Timothy Michael Sawyer
Michael Schulte
Edward Seid
Daryl Skinner
Phillip R. Smith
Christopher P. Snell
Adam Christopher Snow
Joe Strang
Aaron Straub
Henry L. Terrie
Henry J. Thompson
Harmon D. Throneberry, Sr.
Thomas N. Thrush
Harold Torrance
Charles (Chuck) D. Unruh
John Walton
Bill Witmer
Edward Wycoff
Brian Yang

*List is current through 7/15/2022

TRIBUTE GIFTS

Todd, Connie, and Gabriella Germano *In Honor of Gabriella Germano*
The Extended Firestein Family *In Memory of Arthur Feuerstein*
Mark & Donna Alarie *In Memory of Brenda Goichburg*
The Chen Family Fund *In Memory of Henry Chen*
Ernest Schlich *In Memory of Joan Schlich*
The Hammond Family Foundation *In Memory of Liam Williams*
Timothy McGibbons *In Memory of My Friend Wayne Clark*
Jordana Sternberg *In Memory of Rebecca Shaw Shepherd*

GIFTS IN KIND

Karen Boyd
Pontus Carlsson
Chess.com
ChessKid
Internet Chess Club (ICC)
Juga of Jugamusica.com
Judy Kiragu
Luciana Morales Mendoza
Mexpo
Dr. Phillip Mwashe
Nadya Ortiz
Judit Polgar
TrophiesPlus

US Chess also thanks its many volunteers who tirelessly serve on committees and at events, as well as various other capacities within the organization. Their commitment to US Chess and to the larger chess community is greatly appreciated.

CELEBRATING US CHESS PROGRAMS



What unites high school students from Baltimore and Afghan refugee students living in Raleigh? US Chess support for their school chess programs.

At US Chess, we take our educational and charitable mission to heart. We have been concurrently building programs to bring chess to women and girls, seniors, and at-risk youth. In developing these programs to support people from disparate backgrounds, we returned to the universality of the chessboard's familiar 64 squares: A common platform, understood throughout the world, and one that captivates the imaginations of so many. Our work in promoting women's and senior chess has been steady and ongoing, but in this report we want to highlight the progress of our At-Risk Youth program.

The cornerstones of access and equity served as our guides in developing our At-Risk Youth program. We set a goal to remove barriers to learning chess by providing the basics: free equipment, identifying local volunteers to teach, and pointing to free or reduced memberships in US Chess. In 2019, in partnership with US Chess Sales, we launched our program by granting free chess sets and a demo board to more than 200 school programs. We did not anticipate the extraordinarily high demand for equipment — we reached our cap in less than 24 hours.

We already knew that chess is popular. But clearly, schools were seeking positive programming to help their students learn and grow. Like many extracurricular activities, however, chess programs often start with large numbers of children that filter down as time goes by. Our goal is to



1

2


US Chess is committed to growing the game for all. To this end, we have put in place an initiative to assist players from Title I schools to be able to attend our national events and compete against schools and players they might not otherwise ever have a chance to. One such group came to our 2022 National High School Championship: The Baltimore Kids Chess League. See all the Baltimore Kids Chess League videos at our US Chess YouTube channel.

[1] "IT'S MORE THAN JUST A GAME": SHAWN MEANS

Shawn Means is an 18-year-old senior who called his initial experience coming to a national championship "amazing" and "overwhelming." He started playing in 10th grade. He says chess "has meant a lot. It is more than just a game for me. Playing with my friends, going over games ... It is all about life and how you move and how you carry yourself."

[2] ALIYONNE HARRIS

Aliyonne Harris is a 15-year-old ninth grader who started playing chess at the beginning of 2022 because her friend was playing chess in the school club. Her favorite thing about chess is thinking about her moves and losing herself in the game. "It is very peaceful to me." Not only was the National High School her first national event, she took her first plane trip to get to Memphis!


3


[3] AMAREE BOBBITT

Amaree is a senior who has played chess since the first grade. He says chess "calms me down" and "keeps my mind running and controlled." While he has played in tournaments before, this was his first experience at a national event.

Amaree shared a most personal story with us. In May 2021 he was the victim of a shooting and was unable to finish 11th grade on schedule. He reports that being on his chess team helped make sure that he "didn't lose it" during that trying time. "I would say that chess means the world, but it goes beyond that. When I'm in front of the chess table, everything goes away. I just feel so comfortable when I play chess."

PROGRAMS

build a pipeline of enduring enthusiasts — from professional players to lifelong hobbyists — which is integral to keeping the benefits of chess at the forefront. This pipeline also includes supporters, organizers, event directors, or anyone who brings chess to their local communities.

In order to build this sustainable programmatic pipeline, we chose to concentrate on at-risk youth. To assist us in identifying who we could best serve, we focus on schools designated as Title I by the U.S. Department of Education. Under Title I, schools with high numbers of children from low-income families receive assistance and opportunities to help ensure that all children meet challenging state academic standards.

In the spring of 2022, the emerging At-Risk Youth program took a turn when a new opportunity to impact students presented itself. The US Chess Development Committee initiated a fund drive to send a team from a Title I school to each of the four spring nationals. In April, a 21-player team from Bard High School in Baltimore, Maryland, participated in the National High School (K-12) Championship. These players — many of whom had not flown before or traveled far from home — competed, supported one another through triumph and defeat, and experienced the larger chess community for the first time. Interviews with these players reveal the role chess has played in their development. When describing how chess is more than a game, Bard team member Shawn Means stated, “It’s all about life and how you move. And how you carry yourself in life.”

A second opportunity arose when an English as a Second Language teacher shared that a group of new students — refugees from Afghanistan — would be joining her class mid-year. Knowing that chess was once popular but had been banned in that country, the teacher was asked if she knew whether the children played chess. Soon, GM Elshan Moradiabadi was brought in to communicate with the children and teach them chess basics, as Farsi is dialectically similar to Dari, a common language in Afghanistan. In all, he conducted three sessions with the children. *(Photos, right)*

A YouGov poll that we commissioned in 2019 revealed some 70 million Americans have at least a passing interest in chess. So, where are they if they are not connected to US Chess? More importantly: How do we engage them in US Chess and the programs we offer? These are the challenges — and opportunities — we face going forward.

You can learn more about US Chess programs by visiting new.uschess.org/community.





**The cornerstones
of access and equity
served as our guides
in developing our
At-Risk Youth
program.**



AWARDS

Koltanowski Award: Gold

[1] Dr. Jeanne & Rex Sinquefeld

Since its founding in 2007, Dr. Jeanne and Rex Sinquefeld, through the Saint Louis Chess Club, have been supportive partners to US Chess by hosting our flagship championships: the U.S. Championship, U.S. Women's, U.S. Senior, U.S. Junior, and U.S. Girls' Junior. They have consistently provided generous financial support to important US Chess programs, such as the Women's Program and the U.S. Olympiad team.

Koltanowski Award: Gold

[2] John D. Rockefeller V

John D. Rockefeller V has made significant contributions to US Chess, both personally and financially. As an active US Chess volunteer, Rockefeller serves as vice chair for the Scholastic Council and vice chair for the Development Committee. In 2020, Rockefeller endowed four US Chess national scholastic tournaments and sponsored several Title I schools to compete in national scholastic events. He is a chess dad and Scholastic Director of the Maryland Chess Association.

Koltanowski Award: Gold

George & Anne Chamberlin (posthumous)

Longtime US Chess member and club tournament director George Chamberlin believed in US Chess and in sharing his love of the game with others. In that vein, the Chamberlins remembered US Chess in their estate plan. Through their generous donation, the Chamberlins leave an enduring legacy that will positively impact lives for years to come.

Koltanowski Award: Silver

[3] Lin & Robert Johnson and son, Donald Johnson

Ever since Donald Johnson first started playing chess, his mother and father, Lin and Robert Johnson, have supported him and his dreams. As Donald has matured into a top player, he has partnered with his parents in their philanthropic giving. The Johnsons have given generously to US Chess' international youth events and At-Risk Youth programs. And when the pandemic brought over-the-board chess to a halt, the Johnsons organized and executed an online fundraiser for US Chess that raised over \$16,000.

Koltanowski Award: Silver

[4] David & Maureen Grimaud

David and Maureen Grimaud are formidable partners with US Chess. David is chair of the Nominating Committee while Maureen serves on the Women's Committee and the Development Committee. In addition to the leadership they demonstrate through service, the Grimauds give generously to women and girls, seniors, and At-Risk Youth programs.

4



THE KOLTANOWSKI AWARDS

These awards are made to an individual or organization offering outstanding financial support to US Chess and are named for IM George Koltanowski (1903-2000), who was known as the "Dean of American Chess." The awards date to 1979.


1

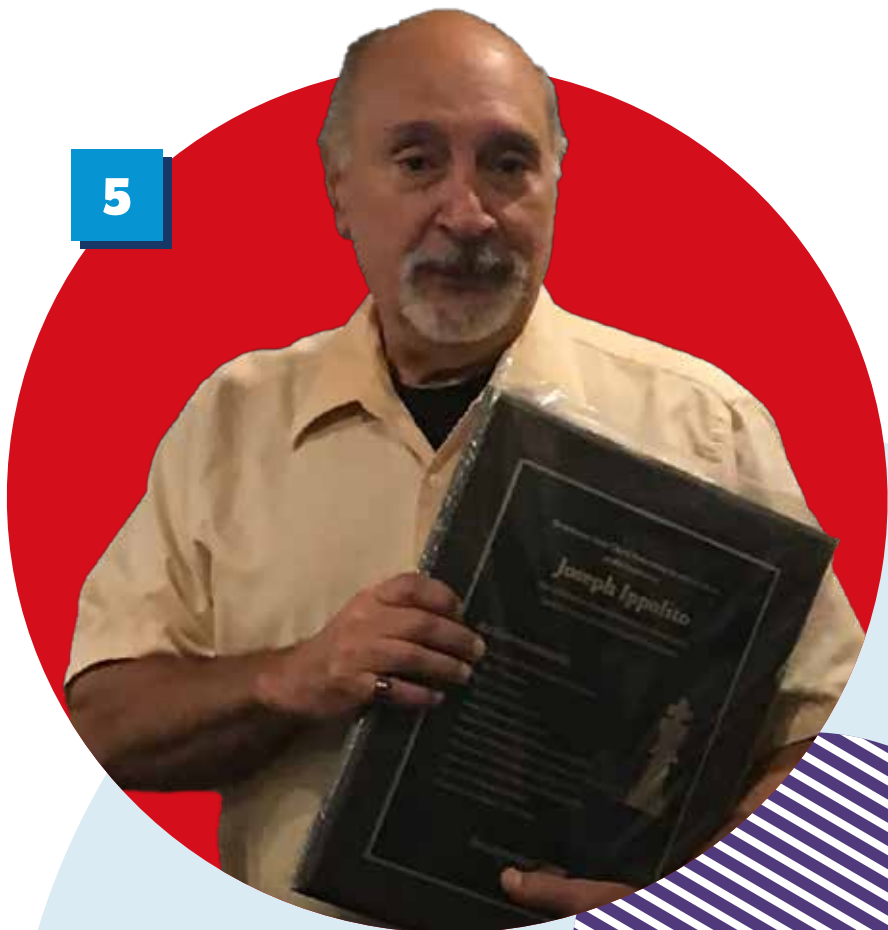
3
2


Distinguished Service

[5] Joe Ippolito (posthumous)

Joe Ippolito's impact on US Chess as an Executive Board member, delegate, and scholastic organizer cannot be overstated. Among his achievements, Ippolito introduced an Advanced Delegate Motion in 2000 that led to the creation of the Scholastic Council. Furthermore, Joe's independence and integrity as an Executive Board member was essential in helping US Chess effectively accomplish goals such as moving the U.S. Chess Hall of Fame Museum to Miami, which served as an essential step toward its current location in St. Louis.

5



Distinguished Service

[6] Steve Immitt

Steve Immitt has helped organize and direct hundreds of events, thereby introducing the game to new players and bringing in many US Chess memberships. Immitt also has served for many years as an active delegate, committee chair, and committee member.

Outstanding Career Achievement

[7] David Mehler

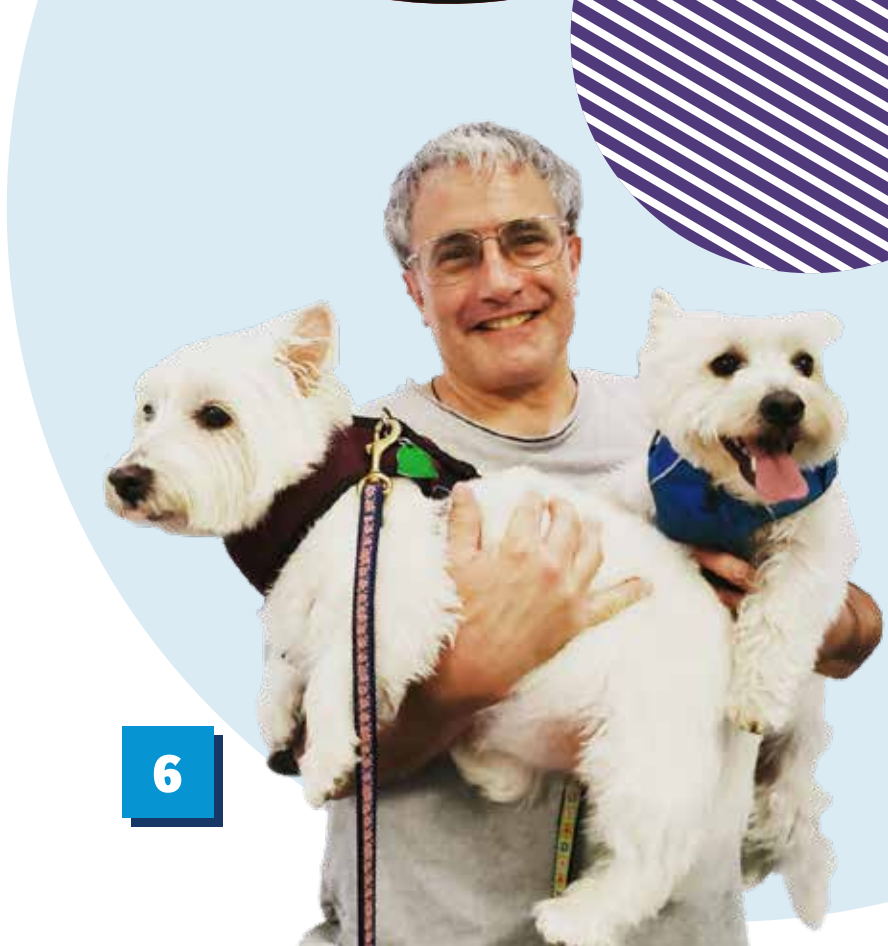
In 1992, David Mehler established a chess center in Washington, D.C., that focused on giving youth — many from disadvantaged backgrounds — exposure to constructive experiences through chess. Over the years, Mehler's U.S. Chess Center has helped thousands of youths and continues to do so today. Mehler also worked to keep the U.S. Chess Hall of Fame Museum viable and growing. He facilitated its move from New Windsor to his center, which led directly to its later, larger locations in Miami and St. Louis. Mehler continues to serve as an active committee member in US Chess governance. He remains a working tournament director, with hundreds of tournaments and sections to his credit.

Special Services

David Carl Argall

As editor of the Southern California Chess newsletter, which has significantly promoted and chronicled California chess, David Carl Argall has 83 issues and 1,600 pages to his credit.

6



9



Special Services

[8] Daa'im Shabazz

Daa'im Shabazz, who taught himself to play chess at age 13, created the long-running online magazine, *The Chess Drum*, in 2001. The magazine's purpose is to highlight chess activities within the African diaspora, foster a greater sense of community within the chess world, facilitate sharing ideas and knowledge, and demonstrate chess' wide appeal. Shabazz also has written *Triple Exclam!!! The Life and Games of Emory Tate*, *Chess Warrior* which details Tate's life and 35 games over the course of his 56 years.

7



Meritorious Services

[9] Robert S. Moore

Although Robert S. Moore is no longer active in chess, for many years he was a respected chess organizer, promoter, journalist, and historian. His achievements include being the chief organizer for tournaments in Anchorage, Alaska, that included several prominent and titled players such as GM Dmitry Gurevich, WGM Irina Levitina, IM Jeremy Silman, and IM Georgi Orlov. Moore also wrote a weekly chess column in the *Anchorage Times* for nearly a decade and was a chess historian who authored a biography about Alaska's first champion, W.A. Dickey (1896-1920).

10



8



Frank J. Marshall

[10] IM Jay Bonin

IM Jay Bonin is a chess teacher, author, and lecturer. Known as the "Iron Man of Chess," Bonin is among the most active tournament players in the U.S., having played over 25,000 tournament games. Although he started out as a tactician, Bonin later developed into a more positional player, and became known for how he maneuvered his knights, referred to as the "Bonin Knights." With a career spanning over five decades, Bonin remains a major player, teacher, author, and lecturer.

Grandmaster of the Year

GM Hikaru Nakamura

GM Hikaru Nakamura has had an outstanding year, including his qualification for and strong showing in the Candidates. Coached by FM Sunil Weeramantry since the age of seven, Nakamura was 10 when he defeated IM Jay Bonin, becoming the youngest to receive the title of chess master from US Chess to date. Nakamura became a grandmaster at 15 and has won the U.S. Champion title five times. As a highly popular streamer, Nakamura has attracted a whole new audience to chess, bringing his personal style of play and entertainment to nearly 1.5 million followers on Twitch.



Woman Chessplayer of the Year

IM Carissa Yip

IM Carissa Yip is the 2021 U.S. Women's champion and is the top-rated woman on the April 2022 list. Yip joined a school chess club in first grade after her father taught her the rules, and just a year later she was playing in her first tournament. She beat her first grandmaster, Alexander Ivanov, when she was 10, making her the youngest female chess player to achieve this feat. In October 2019, Yip became the youngest American woman in history to qualify for the title of International Master.



Young Player of the Year

[11] GM Hans Niemann

GM Hans Niemann, 18, is one of the highest-rated junior players in the world. He has won top prizes in major events, including first place in the 2021 World Open and U.S. Junior Championship. In March 2022 Niemann became one of the top 100 chess players in the world, taking the 98th position.

Young Player of the Year

[12] GM Abhimanyu Mishra

GM Abhimanyu Mishra, 13, has set multiple records for youngest achievements of major titles, including the youngest grandmaster. He serves as an ambassador for the nonprofit organization, The Gift of Chess, which helps to promote chess and change lives. Mishra, who learned chess from his father when he was two-and-a-half years old, offers this advice: “Work hard and enjoy this royal game.”

Outstanding Player Achievement

[13] Asa Hoffman

Hoffmann has played thousands of games over many years and has been among the highest-ranked players in the U.S., earning himself the sobriquet “Chess Gladiator.” He is also a noted chess coach and author.

Outstanding Team Performance

[14] 2021 Olympiad Team

Our Olympiad team won the silver medal in the FIDE Online Olympiad despite several top U.S. players being unable to compete due to the event’s late scheduling. Team USA played its way into the final against Russia, eventually falling with a score of 2½-3½, 3-3.

Chess Club of the Year

[15] Memphis Chess Club

The Memphis Chess Club began in 1877 and over the years has been associated with several locations in the city. In 2020, it opened in its current form as a full-service chess club and café — a true gathering place for all. Although the street front sign reads “Memphis Chess Club,” the club offers an exceptional menu — deemed a Top 10 New Restaurant by Memphis Magazine — and great coffee to all, including non-players. Consequently, the Memphis Chess Club has been very well received by both the chess and non-chess communities.

Chess City of the Year

Crossville, Tennessee

Crossville, Tennessee, served as the home of US Chess for 17 years. The city openly welcomed US Chess and gifted our organization the land on which to construct our new headquarters. US Chess is forever grateful for the support provided by the City of Crossville, the Crossville community, Crossville businesses, and the State of Tennessee over the past 17 years. The City of Crossville will always be acknowledged as a valued part of our organization’s history and embraced as a dear friend of chess.



12

15



Chess College of the Year

Saint Louis University

The Saint Louis University (SLU) chess team, an annual powerhouse, won the 2022 President's Cup (aka The Final Four of Chess) against a formidable field of collegiate teams. Founded in 2016, the SLU team has quickly established itself as a nationally recognized force to be reckoned with, and is regarded by the university as an extension of its academic programs.

13



11



14



Tournament Director of the Year

[16] Martha Underwood

Martha Underwood is a National Tournament Director and FIDE Arbiter who is known across the country for her excellent communication, attention to detail, and problem-solving in complex situations, as well as for her rapport with players and fellow staff. She proved her adaptability during the pandemic, when rated chess went online and she became the go-to tournament director for attentive fair-play video monitoring and live troubleshooting with players, parents, and coaches during online tournaments. Underwood continues to be in high demand now that tournaments have resumed over the board.

Organizer of the Year

[17] Al & Janelle Losoff

In 2021, Al and Janelle Losoff stayed actively involved in organizing several major tournaments successfully, despite the continuing challenges of COVID-19, including keeping abreast with the fluctuating rules regarding COVID-19 restrictions.

Tournament Director Lifetime Achievement

[18] Tim Just

Tim Just has been the chief tournament director for multiple national blind championships and has served as editor for various editions of the US Chess rulebook. In addition to running several tournament director workshops, Just is and has been a member and chair of various US Chess committees. He also has worked numerous tournaments that award national championships, many as chief tournament director or floor chief.



21



20



16

Local Tournament Director

[19] Kele Perkins

Kele Perkins, a former Class A player and a tournament director for the Whittier Chess Club, has organized more than 100 free rated chess tournaments. Since 2014, he has been the chief tournament director for the Chesskid Online National Invitational Championships, the only US Chess-approved online national championship.

Senior Tournament Director

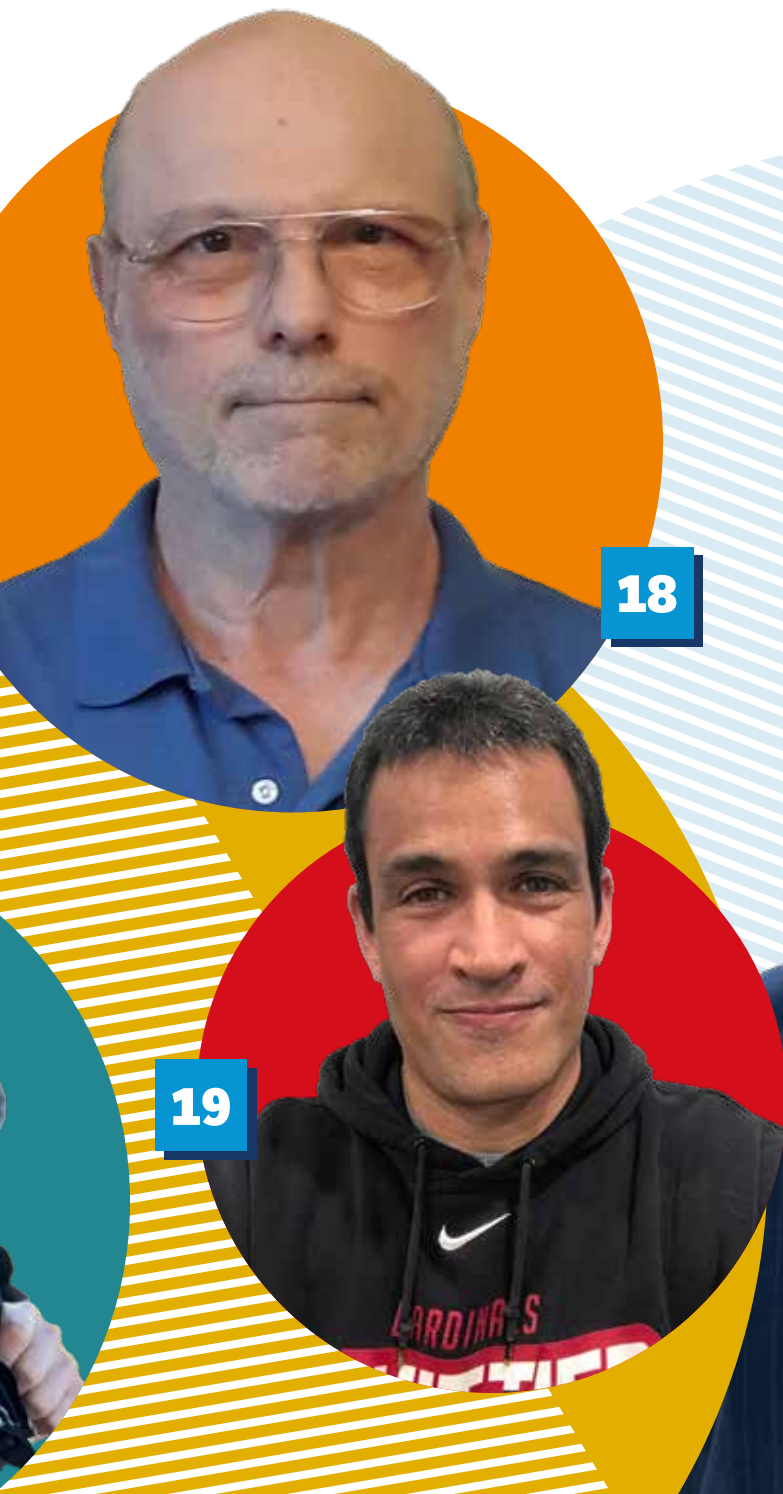
[20] Aaron Ong

Aaron Ong earned his senior tournament director title at age 19 after 14 years of playing in chess tournaments. Being from a family of chess organizers, he quickly learned to direct large-scale tournaments in Southern California, including the American Open. He says his playing and directing experience contributed immensely to his growth and career as a mechanical engineer.

Senior Tournament Director

[21] Anthony Ong

Anthony Ong manages a family-owned business that caters to chess enthusiasts and competitors of all ages and levels. He directs tournaments, books events, markets activities, and submits reports. As a chess coach, Ong has observed how students approach the same goals from multiple angles, and he believes such cautious, analytical thinking has helped guide his own engineering career.



18

19



17

Scholastic Service Award: Individual

[22] Alan Kirshner

Alan Kirshner spent 14 years as the CalChess/N. Cal. scholastic chair, two years as a chess board member at the University of Texas at Dallas, and one year on the US Chess Scholastic Committee. He says, "One does not have to be a great chess player to love the game of chess, to enjoy the sport of chess, to appreciate the art of chess, and to cherish the critical thinking chess demands."

Scholastic Service Award: Individual

Kim Cramer

Kim Cramer's involvement with chess began 33 years ago when her daughter began playing in the second grade. Cramer stepped up to help provide the organizational and communication skills needed to make tournaments a reality for the program. She has stepped up ever since to support scholastic chess.

Scholastic Service Award: Organization

[23] Impact Coaching Network

Russell Makofsky founded Impact Coaching Network with the vision of "establishing a network of high performing chess programs, where each school embodies their own unique chess culture while still maintaining a network wide commitment to excellence." He also was a founding board member of Her Move Next and The Gift of Chess. Through The Gift of Chess initiative, he hopes to provide chess sets and access to educational chess technology to every elementary school classroom across the United States.



Dan Heisman Award for Excellence in Chess Instruction

[24] Bill Cornwall

Bill Cornwall is a chess coach, educator, and journalist best known for his award-winning weekly chess column, "Chess: A Knight's Tour." Cornwall has been teaching chess professionally since 1988, when he launched Cornwall Chess Services, a chess education business. Many of his students have achieved national recognition. In 2014, Bill began working as a senior instructor with the National Scholastic Chess Foundation to train teachers to teach chess. This partnership has trained hundreds of South Florida teachers.

Committee of the Year

Chess in Education Working Group Co-Chairs: [25] Ranae Bartlett, John Galvin (not pictured)

Tasked with defining US Chess' role in education, the Chess in Education Working Group identified a series of short- and long-term actions aimed at giving US Chess a framework for building a chess in education culture. Co-chairs Ranae Bartlett and John Galvin led a group of committed volunteers who sought input from all participants and created a report for the Executive Board that distilled complex ideas into practical steps and a plan to move forward.

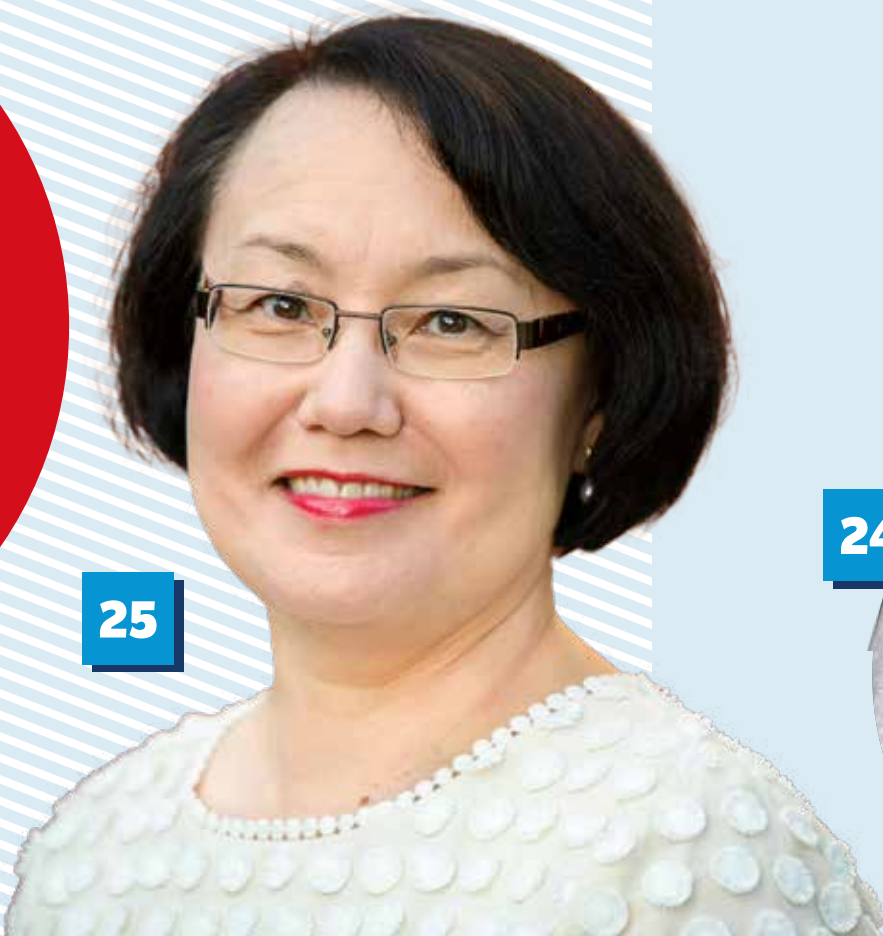
Committee of the Year

[26] States & Affiliates Co-Chairs: Lakshmana Viswanath, Phillip J. Simpkins Under the leadership of co-chairs Lakshmana "Vish" Viswanath and Phillip J. Simpkins, the States & Affiliates Committee worked to clear a backlog of complaints that had increased in recent years. The committee also developed language to clarify the roles of state and regular affiliates and presented the proposed changes as an ADM at the 2022 Delegates Meeting.

Accessibility and Special Circumstances Person of the Year

[27] Janelle Losoff

Janelle Losoff had the foresight to advocate for chess to be played by anyone, regardless of their personal circumstances, and was responsible for the formation of the Accessibility and Special Circumstances Committee. She helped the committee launch its mission and match the current trends in all sports and best practice. Losoff also spearheaded the special sub-committee that created a good working draft of Accessibility Guidelines.



25



24

NATIONAL CH

US Chess sanctions over 50 national championships in a normal year. Here is this year's distinguished list, with some events not listed due to COVID-19 cancellations.

U.S. Champion - October 2021

GM Wesley So



AMPIONS

**U.S. Women's Champion -
October 2021**

IM Carissa Yip



NATIONAL CHAMPIONS

U.S. Senior - July 2021

[1] GM Gregory Kaidanov

U.S. Junior - July 2021

[2] GM Hans Niemann

U.S. Girls' Junior - July 2021

[3] FM Annie Wang

U.S. Open - August 2021

[4] GM Aleksandr Lenderman



4

2

3

1

National Open – June 2021

[5] IM Arthur Guo*, GM Illia Nyzhnyk, GM Andrew Hong, GM Emilio Cordova Daza, GM Lazaro Bruzon Batista

U.S. Women's Open – June 2021

WGM Carla Heredia,
[6] WFM Zoey Tang

U.S. Senior Open – August 2021

[7] GM Dmitry Gurevich


6

7

5

NATIONAL CHAMPIONS

LEFT TO RIGHT: [8] Liu,
[9] Wang, [10] Chen, [11]
Cavanah, [12] Levkov, [13]
Hardaway



National Elementary (K-6) Championship – May 2022

K-6: [8] Eric Chang Liu
[9] Isaac Wang

K-5: Aiden Liu
Carter Ho
Yusuf Mansurov

K-3: Elliott Goodrich

K-1: Aakash Jani
Rocky Wang
Umar Mansurov
Matthew Yu

National Primary (K-3) Blitz – May 2022

Sivavishnu Srinivasan
Yuvraj Singh Sawhney

National Elementary (K-6) Blitz – May 2022

[8] Eric Chang Liu
Anjaneya Sripathy Rao

National Elementary (K-6) Bughouse – May 2022

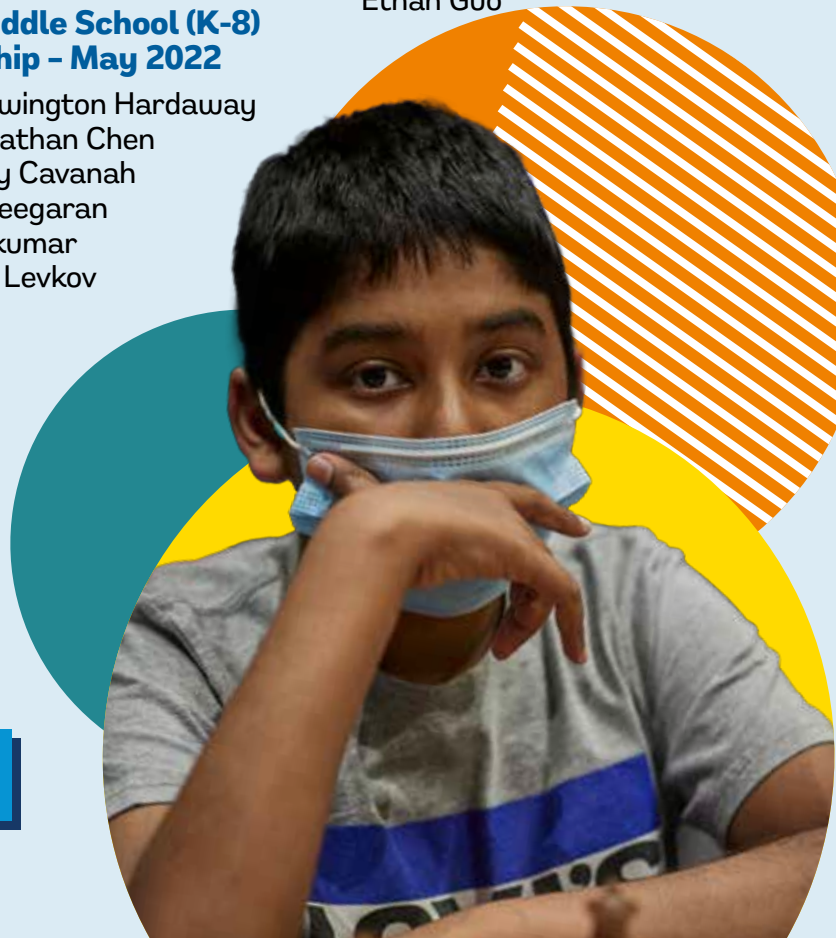
A. Marian and O. Boydell

National Middle School (K-8) Championship – May 2022

[13] Brewington Hardaway
[10] Jonathan Chen
[11] Troy Cavanah
[14] Vaseegaran
Nandhakumar
[12] Ilya Levkov

National Middle School (K-8) Blitz – May 2022

[14] Vaseegaran
Nandhakumar
Ethan Guo





LEFT TO RIGHT: **[15]** Karthik, **[16]** Vanapalli, **[17]** Huston, **[18]** He, **[19]** Chasin, **[20]** Tahmassebi

National Middle School (K-8) Bughouse – May 2022

A. Bianchi & L. Shafer
A. Nair & A. Suresh

National High School (K-12) Championship – April 2022

[15] IM Arthur Guo
[16] Vishnu Vanapalli
[17] FM Gus Huston
[18] IM Anthony He
[20] Bijan Tahmassebi
[19] FM Nico Chasin
[15] Advaith Karthik

National High School (K-12) Blitz – April 2022

[18] IM Anthony He
Hersh Singh

National High School (K-12) Bughouse – April 2022

L. Liu & D. Levkov
FM N. Chasin & IM A. Costello

National K-12 Grade Championship – December 2021

K: Winston Huang Wang
Sriansh Katta
1st: Vishnu Chetlapalli
Yang Yu
2nd: Tariq Yue
3rd: Ethan Guo
4th: Megan Alt Paragua
Connor Junda Wang
5th: Andrew Jiang
6th: Eric Chang Liu
Luca Chang
Sahana Aravindakshan
Julian Colville
Oliver Boydell
7th: Brewington Hardaway
8th: Raymond Xu
Aniket Shukla
William Wu
9th: FM Nico Werner Chasin
10th: FM Gus Huston
Jason Lu
11th: Raghav Venkat
12th: Pradhyumna Kumar
Kothapalli

All-Girls National Championship – April 2022

U18: Iris Mou
U16: Asha Kumar
Yesun Lee
U14: Kally Wen
Chloe Gaw
Ananya Ananth
U12: Jasmine Su
U10: Ananya Wadhwa
U8: Dena Wang

National Online Scholastic Championship – June 2021

K-1: Winter Su
K-3: Andrew Wu
Roshan Sethuraman
Sam Luger
K-5: Sho Moritani
Eric Chang Liu
Luca Giorgio Tessiere
FM Tanitoluwa Adewumi
Alexander J. Wang
K-6: FM Erick Zhao
K-9: Hersh Singh
K-12: IM Justin Wang

21



U.S. Class Championships – July 2021

Master: GM Vladimir Belous
Expert: Dhruv Pathak

Isaac George
Class A: John Farrell
Nirupam Kushalnagar
Jay Parashar
Patrick Young

Class B: Jackson Service
Class C: Michael Boyle
Class D: Caleb Yohannes
Workeneh

Class E and under:
Thanh Viet Nguyen
Samuel Gu

U.S. Junior Open – August 2021

U8: Lucas Silvestre
U11: William Wang
U15: Jack Heller
U21: Pedro Espinosa
Aiden Carey
Elijah Samuel Platnick

22



U.S. Blitz – August 2021

GM Alexander Fishbein
FM Ryo Chen

U.S. Game/15 – August 2021

Samuel Heran-Boily

U.S. Blind – October 2021

Jessica T. Lauser

Irwin: Seniors (50+) – August 2021

[26] IM Igor Khmelnitsky

Denker: HS (9-12) – August 2021

[23] GM Awonder Liang

Haring: Girls (K-12) – August 2021

[25] FM Ruiyang Yan
[24] Ambica Yellamraju

Barber: MS (6-8) – August 2021

[22] Vyom Vidyarthi

Rockefeller: ES (K-5) – August 2021

Henry Deng, [21] Austin Tang,
Sepehr Golsefidy

Weeramantry: Blitz – August 2021

2200+: [23] GM Awonder Liang
1800-2199: Ambica Yellamraju,
Arnav Tamnash Gupta
1400-1799: Lucas Flach
U1400: Andrew Jing

U.S. Amateur Event – February 2022

East: ICN

Lev Paciorkowski, Bahadur Khodzhamkuliev, Kenneth Fernandez, Jon Rigai

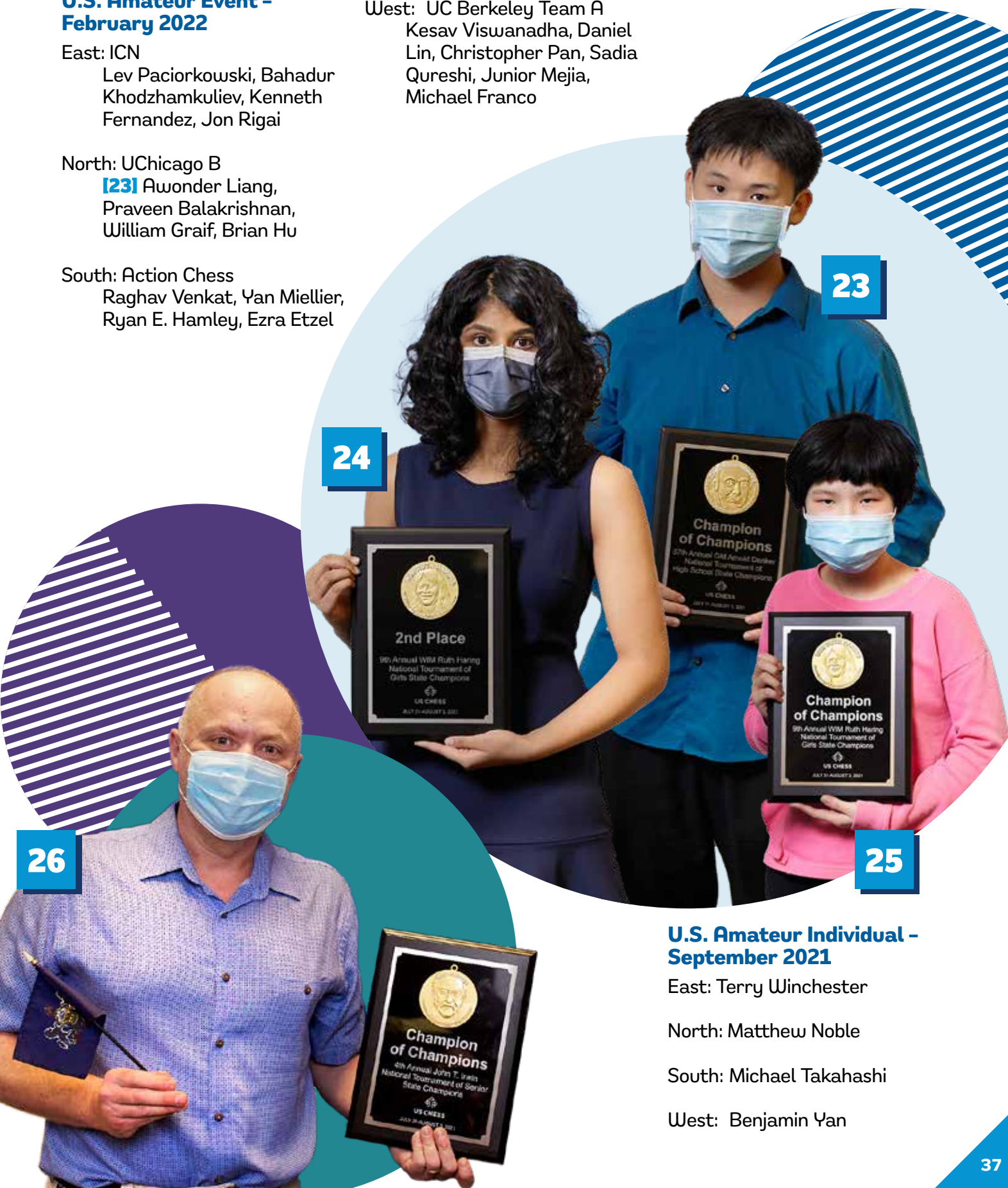
North: UChicago B

[23] Awonder Liang, Praveen Balakrishnan, William Graif, Brian Hu

South: Action Chess

Raghav Venkat, Yan Miellier, Ryan E. Hamley, Ezra Etzel

West: UC Berkeley Team A
Kesav Viswanadha, Daniel Lin, Christopher Pan, Sadia Qureshi, Junior Mejia, Michael Franco



U.S. Amateur Individual – September 2021

East: Terry Winchester

North: Matthew Noble

South: Michael Takahashi

West: Benjamin Yan

NATIONAL CHAMPIONS

Pan-Am Intercollegiate Team - January 2022

[27] Saint Louis University Team A

The President's Cup (Final Four) - April 2022

Saint Louis University

Pan-Am Intercollegiate Individual - January 2022

GM Emilio Cordova Daza, IM Viktor Matviishen, FM Gabriela Antova, FM Jason Shi, GM Benjamin Bok, Arman Baradaran, GM John Michael Burke

U.S. Masters - November 2021

[28] Jose Alcantara Martinez, [29] Rahul Srivasthav Peddi

U.S. Armed Forces Championship - October 2021

Charles Unruh, Navy

U.S. Cadet

Not Held - 2021

27



29



28



2021-2022 FIN

UNITED STATES OF AMERICA CHESS FEDERATION STATEMENTS OF FINANCIAL POSITION ASSETS - MAY 31, 2022

OPERATING ASSETS

Cash	\$ 1,794,683
Prepaid Expenses	149,171
Investments	727,742
Furniture and Equipment (net of accumulated depreciation of \$154,977)	316,698
Total Operating Assets	2,988,294

LIFE MEMBERSHIP ASSETS

Cash	230,735
Investments	629,264
Land	264,000
Building and Improvements (net of accumulated depreciation of \$288,567)	352,854
Total Life Membership Assets	1,476,853

ENDOWMENT FUND

Cash	894,837
Investments	719,439
Total Endowment Cash and Investments	1,614,276

TOTAL ASSETS **\$ 6,079,423**

LIABILITIES

Accounts Payable	\$ 297,826
Accrued Expenses and Other Liabilities	101,507
Deferred Multi-Year Memberships	1,376,654
Deferred Sales and Tournament Income	19,062
Deferred Scholarships	115,884
Deferred Revenue - Life and Sustaining Memberships	445,449

TOTAL LIABILITIES **2,356,382**

NET ASSETS

Without Donor Restrictions	
With Board Designated Restrictions	1,514,251
Without Board Designated Restrictions	241,199
With Donor Restrictions	1,967,591
Total Net Assets	3,723,041

TOTAL LIABILITIES AND NET ASSETS **\$ 6,079,423**

UNITED STATES OF AMERICA CHESS FEDERATION STATEMENTS OF ACTIVITIES AND CHANGES IN NET ASSETS YEAR ENDED MAY 31, 2022

OPERATING REVENUES

Memberships	\$ 1,492,489
Tournaments	740,948
Magazine Revenues	248,860
Sales Revenues	119,922
Donations	130,497
Investment Return	(174,183)
Interest Income	90,754
Other Services	170,043
Other Revenues	30,334
Paycheck Protection Program Loan Forgiveness	189,437
Total Revenues	3,039,101

INCREASE (DECREASE) IN NET ASSETS

WITHOUT DONOR RESTRICTIONS	(659,140)
CHANGES IN NET ASSETS WITH DONOR RESTRICTIONS	
Donations	699,873
INCREASE (DECREASE) - NET ASSETS with donor restrictions	699,873
Increase (Decrease) in Net Assets	40,733
NET ASSETS - BEGINNING	3,682,308
NET ASSETS - ENDING	\$ 3,723,041

continues on next page

OPERATING EXPENSES

Magazine	769,781
Tournament Expenses	851,792
Programming	508,718
Membership Development	20,183
Governance	24,935
General and Administrative Expenses	1,310,161
Fundraising Expenses	119,826
Depreciation	92,845
Total Expenses	3,698,241

For the full version of the 2021-2022 audited financial report, including the accompanying notes for these financial statements, please see new.uschess.org/financials.

UNITED STATES OF AMERICA CHESS FEDERATION
STATEMENT OF FUNCTIONAL EXPENSES
YEAR ENDED MAY 31, 2022 (continued on next page)

PROGRAM ACTIVITIES

	Magazine	Tournament	Programming	Total Program
Advertising and Promotions	\$ -	\$ -	\$ -	\$ -
Bank and Credit Card Charges	-	-	-	-
Contract Labor	60,038	-	29,680	89,718
Development	-	-	-	-
Equipment Rental	-	-	-	-
Executive Board Meetings and Travel	-	-	-	-
FIDE International Representation	-	-	-	-
Insurance	-	-	-	-
IT Expenses	-	-	-	-
Office Supplies	-	-	-	-
Other	-	-	-	-
Personnel Expense	348,534	-	337,465	685,999
Printing, Mailing and Postage	361,209	-	-	361,209
Professional Fees	-	-	-	-
Programming	-	-	141,573	141,573
Property and Other Taxes	-	-	-	-
Repairs & Maintenance	-	-	-	-
Tournament Expense	-	-	-	-
International	-	56,582	-	56,582
Tournament Expense	-	-	-	-
Domestic	-	795,210	-	795,210
Travel	-	-	-	-
Utilities	-	-	-	-
Total Expenses before Depreciation	769,781	851,792	508,718	2,130,291
Depreciation	-	-	-	-
TOTAL EXPENSES	\$769,781	\$ 851,792	\$ 508,718	\$2,130,291

UNITED STATES OF AMERICA CHESS FEDERATION
STATEMENT OF FUNCTIONAL EXPENSES
YEAR ENDED MAY 31, 2022 (continued from previous page)

SUPPORTING SERVICES

	Membership	Governance	G&A	Fundraising	Grand Total
Advertising and Promotions	\$ -	\$ -	\$ -	\$119,826	\$119,826
Bank and Credit Card Charges	-	-	102,450	-	102,450
Contract Labor	-	-	-	-	89,718
Development	20,183	-	-	-	20,183
Equipment Rental	-	-	4,792	-	4,792
Executive Board Meetings and Travel	-	13,376	-	-	13,376
FIDE International Representation	-	11,559	-	-	11,559
Insurance	-	-	22,435	-	22,435
IT Expenses	-	-	515,736	-	515,736
Office Supplies	-	-	37,582	-	37,582
Other	-	-	10,090	-	10,090
Personnel Expense	-	-	478,166	-	1,164,165
Printing, Mailing and Postage	-	-	-	-	361,209
Professional Fees	-	-	64,669	-	64,669
Programming	-	-	-	-	141,573
Property and Other Taxes	-	-	5,669	-	5,669
Repairs & Maintenance	-	-	7,451	-	7,451
Tournament Expense	-	-	-	-	-
International	-	-	-	-	56,582
Tournament Expense	-	-	-	-	-
Domestic	-	-	-	-	795,210
Travel	-	-	36,218	-	36,218
Utilities	-	-	24,903	-	24,903
Total Expenses before Depreciation	20,183	24,935	1,310,161	119,826	3,605,396
Depreciation	-	-	92,845	-	92,845
Total Expenses	\$ 20,183	\$ 24,935	\$ 1,403,006	\$ 119,826	\$ 3,698,241

UNITED STATES OF AMERICA CHESS FEDERATION
STATEMENT OF FUNCTIONAL EXPENSES
YEAR ENDED MAY 31, 2022

CASH FLOWS FROM OPERATING ACTIVITIES

Increase (Decrease) in Net Assets	\$ 40,733
Adjustments to Reconcile Increase in Net Assets to Net Cash Provided by (Used In) Operating Activities:	
Depreciation	92,845
Unrealized (Gain) Loss on Life Membership Investments	115,122
Unrealized (Gain) Loss on Investments	72,030
Reinvested earnings - Investments	(40,794)
Reinvested earnings - Life Membership Assets and Endowment	(92,765)
Paycheck Protection Program Loan Forgiveness	(188,043)
(Increase) Decrease in Assets:	
Accounts Receivable	2,132
Prepaid Expenses	(147,671)
Cash and Equivalents - Life Membership Assets	133,554
Increase (Decrease) in Liabilities:	
Accounts Payable	249,552
Accrued Expenses and Other Liabilities	(262)
Deferred Multi-Year Memberships	701,756
Deferred Sales and Tournament Income	(5,363)
Deferred Revenue-Life and Sustaining Memberships	65,335
Deferred Scholarships	(7,094)
Net Cash Provided By (Used In) Operating Activities	991,067

CASH FLOWS FROM INVESTING ACTIVITIES

Purchase of Investments	(781,936)
Purchases of Property, Plant, and Equipment	(46,702)
Sale of Investments	52,445
Net Cash Provided By (Used In) Investing Activities	(776,193)

NET INCREASE (DECREASE) IN CASH AND CASH EQUIVALENTS

EQUIVALENTS	214,874
CASH AND CASH EQUIVALENTS - BEGINNING	2,705,381
CASH AND CASH EQUIVALENTS - ENDING	\$ 2,920,255



Photos:

FRONT COVER: (TOP ROW L-R) COS (BOBBITT), CAROLINE KING (NHS), ERIC ROSEN (MISHRA); (SECOND ROW L-R) LENNART OOTES (WORLD CADET), ANA VIVAS (K12 GRADES), SLCC / A. FULLER (JUMBO CHESS); (THIRD ROW L-R) NBC NEWS VIA YOUTUBE (REFUGEES), KIRK THORNTON VIA UNSPLASH (ARCH), CAROLINE KING (BOARD); (BOTTOM ROW L-R) MARK CIESLIKOWSKI (BANNERS), JENNIFER OBRERO-PARAGUA (PARAGUA), CAROLINE KING (FINEGOLD BLITZ)

INSIDE FRONT COVER AND HERE: SHUTTERSTOCK

PAGE 1: MICHAL VRBA VIA UNSPLASH (ALL)

PAGE 2: SHUTTERSTOCK

PAGE 3: SLCC / C. FULLER (BOARD)

PAGE 4: IREDIA EKHATO (HOFFPAUIR)

PAGE 6: CATHERINE DAVIS (MEYER)

PAGE 8: IREDIA EKHATO (UNRUH)

PAGES 14/15: COS (BOBBITT AT BOARD); US CHESS VIA YOUTUBE (ALL OTHERS)

PAGES 16/17: STACEY SHUMAKE (LARGE CENTER AND GIRL IN BLUE JACKET ON LEFT); NBC NEWS VIA YOUTUBE (ALL OTHERS)

PAGES 18/19: SLCC / A. FULLER (SINQUEFIELDS); MARK CIESLIKOWSKI (GRIMAUDS); IREDIA EKHATO (ROCKEFELLER); COS (JOHNSONS)

PAGES 20/21: MARK CIESLIKOWSKI (SHABAZZ); COS (ALL OTHERS)

PAGES 22/23: SLCC / LENNART OOTES (ALL)

PAGES 24/25: RAJIV MUNDAYAT (MISHRA); COS (MEMPHIS AND HOFFMAN); SLCC / LENNART OOTES (NIEMANN); SLCC / A. FULLER (SLU)

PAGE 26/27: TIM HANKS (LOSOFFS); COS (ALL OTHERS)

PAGES 28/29: MARK CIESLIKOWSKI (STATES & AFFILIATES AND LOSOFF); AMOS MACE VIA WIKIMEDIA (CORNWALL); COS (ALL OTHERS)

PAGES 30/31: SLCC / LENNART OOTES (ALL)

PAGES 32/33: SLCC / LENNART OOTES (LENDERMAN, NIEMANN, AND WANG); SLCC / A. FULLER (KAIDANOV); BETSY ZACATE (TANG); SLCC (GUREVICH); TIM HANKS (GUO)

PAGES 34/35: PHILIP PETERSON (FROM NES); RANDY ANDERSON (FROM NMS); CAROLINE KING (FROM NHS)

PAGES 36/37: IREDIA EKHATO (ALL)

PAGES 38/39: BILL SIMMONS (SLU); COURTESY UT DALLAS (PEDDI); DAWN MOORE (ALCANTARA)

BACK COVER: (TOP ROW L-R) PHILIP PETERSON (BUGHOUSE PARTICIPANTS), FLORIN ARDELEAN (WORLD YOUTH), SLCC / LENNART OOTES (BOARD); (SECOND ROW L-R) CAROLINE KING (NHS MEDALS), CAROLINE KING (NHS HANDSHAKE), RANDY ANDERSON (NMS GIRLS CLUB); (THIRD ROW L-R) RANDY ANDERSON (NMS), COS (TANI), MARK CIESLIKOWSKI (IRWIN); (BOTTOM ROW L-R) PHILIP PETERSON (PARENT AND CHILD), RANDY ANDERSON (TROPHIES), CAROLINE KING (GROUP WATCHING)

*COS = COURTESY OF SUBJECT **SLCC = SAINT LOUIS CHESS CLUB



 **US CHESS**
FEDERATION

**P.O. Box 775308
St. Louis, MO 63177**

uschess.org

