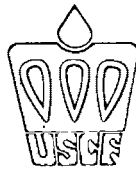


# The 1977 Yearbook of the United States Chess Federation



Here's your USCF staff outside our new home at 186 Rt. 9W, New Windsor, New York, ready to serve you. From left to right (names of staff members who were absent when the photo was taken are in parentheses): Jack Straley Battell, Postal Chess Director; Steven Kopelman, Assistant to Postal Chess Director; Deborah Good, Postal Clerk; (Joan DuBois, Assistant to Postal Chess Director); Martin E. Morrison, Technical Director; Judith Misner, Membership & Rating Supervisor; Susan Cudak, Rating Statistician; Christine Brown, Rating Statistician; Bonnie Antonucci, Rating Statistician; Irmgard Russek, Tournament Clerk; Donna Knapp, Rating Statistician; (Sandra Paden, Chief Rating Statistician; Mary Sattler, Membership Clerk; Joanne Ruscitti, Chief Membership Clerk; Anna Cheesman, Membership Clerk; E. B. Edmondson, Executive Director; (Eva Moore, Secretary to Executive Director); Margaret M. Schwab, Administrative Director; Debra Bennington, Receipts & Sales Supervisor; Toni-Ann Joyce, Receptionist and Receipts Clerk; Mary Jane Morse, Receipts Clerk; Illahna Wygant, Receipts Clerk; Nancy Sturdevant, Bookkeeper; Eric D. Bone, Computer Manager; Keith Bennington, Shipping Clerk; (Joseph Miller, Chief Shipping Clerk).

A Publication of the  
United States Chess Federation  
186 Rt. 9W, New Windsor, NY 12550

Price: 75¢

## Table of Contents

<p>Foreword ..... 2</p> <p>Would You Like to Advertise in the USCF Yearbook? 2</p> <p>General Information on the United States Chess Federation ..... 3</p> <p style="padding-left: 20px;">Origins ..... 3</p> <p style="padding-left: 20px;">Purposes ..... 3</p> <p style="padding-left: 20px;">Membership ..... 3</p> <p style="padding-left: 20px;">Affiliation ..... 3</p> <p style="padding-left: 20px;">Tournament Director Certification ..... 3</p> <p style="padding-left: 20px;">Postal Chess Tournaments ..... 4</p> <p>USCF Governance</p> <p style="padding-left: 20px;">Voting Members ..... 4</p> <p style="padding-left: 20px;">Board of Delegates ..... 4</p> <p style="padding-left: 20px;">Policy Board ..... 4</p> <p style="padding-left: 20px;">First Regional Vice Presidents ..... 4</p> <p style="padding-left: 20px;">Regional Vice Presidents ..... 5</p> <p style="padding-left: 20px;">Officers Appointed by the Policy Board ..... 5</p> <p style="padding-left: 20px;">Committees ..... 5</p> <p>The USCF National Staff ..... 6</p> <p>Official USCF Logos ..... 6</p> <p>Prison Chess Program ..... 7</p> <p>School Chess Program ..... 7</p> <p>Title VII: Federal Aid for School Chess ..... 7</p> <p>Grandmaster On-Staff ..... 7</p> <p>Tournament Clearinghouses ..... 8</p> <p>The USCF Rating System ..... 8</p> <p style="padding-left: 20px;">USCF Rating Regulations ..... 8</p> <p style="padding-left: 20px;">Examples of Rating Calculation ..... 9</p> <p>Major USCF Tournaments Open for Bidding ..... 10</p> <p style="padding-left: 20px;">List of Major Tournaments ..... 10</p> <p style="padding-left: 20px;">Submitting a Bid ..... 10</p> <p style="padding-left: 20px;">General Requirements ..... 10</p> <p>Algebraic Notation ..... 11</p>	<p>Chess Magazines and Columns ..... 12</p> <p style="padding-left: 20px;">U.S. and Canadian Chess Magazines ..... 12</p> <p style="padding-left: 20px;">U.S. and Canadian Chess Columns in General-Circulation Periodicals ..... 13</p> <p style="padding-left: 20px;">Foreign English-Language Chess Magazines ..... 13</p> <p>Convenient Addresses ..... 13</p> <p>State Chapters ..... 16</p> <p>State Champions ..... 16</p> <p>Top Ten Non-National Tournaments ..... 16</p> <p>Results of U.S. Players in FIDE-Rated Foreign Tournaments ..... 17</p> <p>Foreign Country Abbreviations ..... 17</p> <p>Crosstables of International Tournaments Held in the United States ..... 18</p> <p style="padding-left: 20px;">Manhattan Chess Club International ..... 18</p> <p>Crosstables of National Tournaments ..... 18</p> <p style="padding-left: 20px;">U.S. Women's Championship &amp; FIDE Zonal Playoff for Second Place ..... 18</p> <p style="padding-left: 20px;">U.S. Junior Championship ..... 18</p> <p style="padding-left: 20px;">U.S. Women's Championship ..... 18</p> <p style="padding-left: 20px;">American Open ..... 19</p> <p style="padding-left: 20px;">U.S. Intercollegiate Team Championship (Pan-American Intercollegiate) ..... 20</p> <p style="padding-left: 20px;">U.S. Team ..... 21</p> <p style="padding-left: 20px;">National Open ..... 22</p> <p style="padding-left: 20px;">National High School ..... 22</p> <p style="padding-left: 20px;">U.S. Amateur ..... 24</p> <p style="padding-left: 20px;">U.S. Class Championships ..... 24</p> <p style="padding-left: 20px;">U.S. Junior Open ..... 25</p> <p style="padding-left: 20px;">U.S. Open ..... 26</p> <p style="padding-left: 20px;">Armed Forces Championship ..... 26</p> <p style="padding-left: 20px;">U.S. Intercollegiate Individual Championship ..... 27</p>
---	--

### Foreword

The material contained in this 1977 USCF Yearbook includes the information on file at the USCF National Office as of September 15, 1976. Additions and corrections are welcomed and may be sent to the compiler.

**Martin E. Morrison, Compiler**  
**Burt Hochberg, Editor**  
**U.S. Chess Federation**  
**186 Rt. 9W**  
**New Windsor, NY 12550**

### **Would You Like To Advertise in the USCF Yearbook?**

The *USCF Yearbook* reaches all our top organizers and affiliates across the country, as well as many of our members. If you would like to place an advertisement in next year's *Yearbook*, please send your name and address and the size of the ad you have in mind to the Technical Director at the USCF National

Office. When a publication schedule and advertising rates have been determined for the next edition, we will notify you.

These ads are available to everyone, including commercial advertisers. Ad copy is subject to USCF approval.

# General Information on the United States Chess Federation

## Origins

The United States of America Chess Federation was formed in 1939 through the merger of two predecessor organizations, the American Chess Federation and the National Chess Federation. The older of the predecessors, the American Chess Federation, had begun in 1900 as the Western Chess Association, which was a group of chess enthusiasts who met each summer at Excelsior, Minnesota. At first its scope was limited to the promotion of chess in the western and central states, but soon it was recognized that there was a need to promote chess throughout the United States. The Western Chess Association therefore expanded its functions and in 1934 changed its name to the American Chess Federation.

A rival chess organization of a more conservative nature, the National Chess Federation, had been formed and was operating mainly in the eastern states. It was considered inevitable that the two organizations should merge. Finally, in 1939, the United States of America Chess Federation was chartered in the State of Illinois as a nonprofit corporation.

## Purposes

The USCF was originally chartered for the following purposes:

"(1) to promote the study and knowledge of the scientific game of chess;

"(2) to foster the development of players and to help those who seek to become masters;

"(3) to encourage the formation of chess groups, clubs, and associations;

"(4) to hold a tournament once every two years for the chess championship of the United States and to confer upon the winner of such tournament the title United States Chess Champion; and

"(5) to hold an open tournament every summer in some major city of the United States."

Over the ensuing years its purposes have been expanded:

(a) to be educational and instructional, to broaden and develop chess as art and recreation and as a significant element of culture in America;

(b) to cooperate with schools, colleges, hospitals, military bases, community centers, recreation departments and other groups and institutions in teaching chess, conducting tournaments, and other activities;

(c) to disseminate information through its publications and representatives; and

(d) to select the official U.S.A. representatives in all international chess affairs.

The Federation now sponsors over a dozen national tournaments, including the United States Championship, the United States Open Championship, and the United States Amateur Championship and, through its affiliates, every important chess tournament in the nation.

## Membership

Anyone interested in advancing U.S. chess is eligible for membership, with benefits which include —

(1) a subscription to *Chess Life & Review*, the monthly magazine which is an official publication of the USCF (Participating Junior and Spouse Members do not receive the magazine as a benefit of membership);

(2) a national chess rating, based on performances in USCF-rated tournaments in which USCF membership is a requirement of entry (membership is available at the tournaments) and monthly notification of that rating on the magazine mailing label (except Participating Junior and Spouse Members);

(3) the opportunity to compete in USCF Postal Chess Tournaments, for which membership (or a *Chess Life & Review* subscription) is a requirement of entry; and

(4) discounts on items from the USCF's Catalog of Chess Books and Equipment by convenient mail-order.

**Regular Membership:** \$15.00 (one year), \$28.50 (two years), \$40.00 (three years).

**Junior Membership** (under 19 years of age at the new date of expiration, if a resident of the U.S. or Canada or submitting a membership through a USCF affiliate): \$8.00 (one year), \$15.00 (two years), \$21.50 (three years).

**Participating Junior Membership** (same age and residency requirements as for a Junior Membership, with exceptions in benefits noted above): \$2.50 per year.

**Senior Membership** (those who are 65 and over at new expiration date): \$10.00 per year.

**Spouse Membership** (husband or wife of a Regular, Life or Sustaining Member — whose USCF Identification Number must be supplied — with exceptions in benefits noted above): \$10.00 per year.

**Special Membership** (for the blind): \$3.50 per year.

**Nonmember Subscription** (*Chess Life & Review* subscription only, with no membership benefits except Postal Tournament right of entry): \$13.50 per year.

## Affiliation

Any organization of chess players may affiliate with the USCF, with benefits which include —

(1) the privilege of sponsoring USCF-rated tournaments in accordance with USCF procedures for conducting and reporting rated tournaments and under the supervision of a Certified Tournament Director;

(2) free listing of rated tournaments in the "Tournament Life" department of *Chess Life & Review*;

(3) the privileges of sponsoring Nonrated Beginners Tournaments and of listing these in *Chess Life & Review*;

(4) being entitled to a commission on individual membership dues collected and forwarded to the USCF;

(5) discounts on merchandise from the USCF's Catalog of Chess Books and Equipment by convenient mail-order;

(6) a subscription to *Chess Life & Review*;

(7) receipt of the USCF Rating List Supplement.

**Regular Affiliation:** \$25.00 per year.

**College Chess Club Affiliation:** \$15.00 per year.

**High School Chess Club Affiliation:** \$10.00 per year.

**Prison Chess Club Affiliation:** \$10.00 per year.

Affiliates are not agents of the USCF for any purpose.

## Tournament Director Certification

Any USCF member may become a Certified Tournament Director by filling out an application form (available from the USCF National Office), passing a written, open-book (multiple-choice) at-home examination which tests his knowledge of the *Official Rules of Chess* (available from the USCF Catalog) and the USCF forms and procedures for conducting rated tournaments.

Tournaments to be rated by the USCF for the National Rating List must be supervised by a Certified Tournament Director at the appropriate level. Certification, including the administering of all examinations, is free.

Certified Tournament Directors are not agents of the USCF for any purpose.

## Postal Chess Tournaments

Any USCF member or magazine subscriber has the opportunity to compete in USCF Postal Chess Tournaments. The USCF conducts, on a continual basis, the following three postal tournaments:

(1) **Class Tournaments.** Four-player tournaments at minimum expense in entry fee (\$3.50) and postage (two games on one set of postcards). Each player has six games: one White, one Black, with each of three opponents. Players are grouped according to playing strength (class).

(2) **Prize Tournaments.** Seven-player tournaments for prizes, \$10.00 first and \$5.00 second, in chess books or equipment from the USCF catalog. Each player has six games, White against three opponents, Black against three. Entry fee is \$5.00. Players grouped by strength (class).

(3) **Golden Knights Postal Championships.** Seven-player qualification tournaments with classes mixed; successful competitors progress to the finals. Top scorers win substantial cash prizes, all who complete play in the finals win Golden Knights pins, and all others who complete their assignments win consolation prizes. Entry fee is \$7.80.

## USCF Governance

Official USCF business material (legal documents, minutes, financial statements, etc.) is mailed approximately four times per year to those listed below. Members interested in receiving such material should write to the Technical Director at the USCF National Office to be placed on the special mailing list.

None of those listed below is an agent of the USCF, except officers acting in their official capacity.

### Voting Members

The Voting Members are responsible for electing the officers of the Federation. There are 300 Voting Members, apportioned among the states in proportion to their USCF membership. In addition, Policy Board members, Regional Vice Presidents and Life Voting Members are Voting Members.

The State Voting Members are certified by the authorized state officer before November 1. Included with this certification is an ordered list of Alternate Voting Members. The term of each Voting Member commences on January 1 of the year for which he is selected and continues for one year.

The names and addresses of the Voting Members, Alternates and certifying affiliates appear by the February issue of *Chess Life & Review* of the year for which they are selected.

### Board of Delegates

The Board of Delegates is responsible for the management of the USCF. It formulates general policy and writes the bylaws. The Board of Delegates is composed of the Policy Board members, the Regional Vice Presidents, the Immediate Past USCF President and 100 Delegates, apportioned among the states in proportion to their USCF membership.

State Delegates are chosen from among the Voting Members at the time of certification of State Voting Members. State Voting Members not selected as Delegates are submitted in an ordered list as Alternate Delegates, who serve at the Annual Meeting in place of absent Delegates. If a state has insufficient Voting Members present at the Annual Meeting to fill its quota of Delegates, its Alternate Voting Members may serve, as needed, as Delegates.

In Class and Prize Tournaments, entries are grouped strictly by class. In Prize Tournaments only players with already established USCF postal ratings are admitted; newcomers are welcome to participate in class tournaments.

Postal tournament entrants must send to the Postal Chess Director at the USCF National Office the proper entry fee, full name, USCF Identification Number, address, type of tournament, class, and whether the entrant is a previous USCF postal chess entrant or a newcomer (in which case a suitable class should be selected).

All games in USCF Postal Chess Tournaments are rated in a national postal chess rating system, which is totally separate from the over-the-board rating system. The basic purpose of the ratings is to assure equitable matching of players in Class and Prize Tournaments. A player is given 600 as his initial rating if he enters as a new or below-average player, 900 as an average player, and 1200 as an above-average player.

In addition to the three on-going tournaments listed above, the USCF is currently organizing new varieties of postal-chess competition, including an Absolute Postal Chess Championship and Postal Chess Class Championships, which will be announced in *CL&R* when sections are being formed.

### Policy Board

The Policy Board manages the affairs of the Federation, including employment and other contracts, between meetings of the Board of Delegates. The Policy Board consists of President, Vice President, Secretary, Treasurer, Immediate Past President and three Members At-Large.

The terms of the Policy Board members begin at the end of the Annual Meeting after their election and continue for three years.

**President:** George Koitanowski, 1200 Gough St., Apt. D-3, San Francisco, CA 94109

**Vice President:** Frederick S. Townsend, Jr., 10 Bermuda Rd., Wethersfield, CT 06109

**Secretary:** M. Lee Hyder, 33 Longwood Dr., Aiken, SC 29801

**Treasurer:** C. Norman Peacor, Country Club Heights, Monson, MA 01057

**Immediate Past President:** Frank Skoff, 1400 W. Warner, Chicago, IL 60613

**Member At-Large:** William Goichberg, 450 Prospect Ave., Mt. Vernon, NY 10553

**Member At-Large:** Doris M. Thackrey, c/o USCF, 186 Rt. 9W, New Windsor, NY 12550

**Member At-Large:** Harold J. Winston, 1400 E. 55th Pl., 805-S, Chicago, IL 60637

### First Regional Vice Presidents

The First Vice President in each Region is the chief executive officer of the Region, responsible for all phases of the Federation program within this Region. He maintains personal contacts by visiting tournament and chess affairs. He endeavors to strengthen and develop Federation organization and communication with his Region. The President designates one of the three Vice Presidents in each Region as First Vice President of the Region for a term of one year.

**New England:** Stephan C. Gerzadowicz, Box 275, E. Templeton, MA 01438

**Eastern:** Larry King, 401 E. 102nd St., Apt. 6D, New York, NY 10029

**Mid-Atlantic:** Bobby G. Dudley, 107 Crosstree, Coraopolis, PA 15108

**Southern:** William H. Dodgen, 2008 Robin Rd., N. Augusta, SC 29841

**Great Lakes:** Robert Hale, Jr., P.O. Box 367, Spiceland, IN 47385

**North Central:** Abe M. Thompson, 315 S. Seventh St., Fargo, ND 58102

**Southwestern:** Paul S. Tally, 508 W. Cloud St., Salina, KS 67401

**Pacific:** Richard E. Fauber, 4537 Brandywine Ct., Carmichael, CA 95608

## Regional Vice Presidents

Each Regional Vice President assists the First Vice President, carries out assignments received from him and endeavors to strengthen and develop Federation organization and communication within his Region. Each year the Voting Members from each Region elect one Regional Vice President.

The terms of the Regional Vice Presidents begin at the end of the Annual Delegates Meeting of the year in which elected and continue three years.

**New England:** George M. Mirijanian, 46 Beacon St., Fitchburg, MA 01420; George S. Cunningham, 4 Glenwood St., Orono, ME 04473

**Eastern:** Roland J. Benoit, P.O. Box 100, Beverly, NJ 08010; Edward A. Frumkin, 4 David Pl., N. Bellmore, NY 11710

**Mid-Atlantic:** Peter H. Hopkins, Christchurch School, Christchurch, VA 23031; George S. Thomas, Jr., 17500 Princess Anne Dr., Olney, MD 20832

**Southern:** James E. Gates, 1007 Brookwood Ave., Columbus, GA 31906; Henry H. Buckman, III, 2043 N.E. 29th St., Ft. Lauderdale, FL 33306

**Great Lakes:** Larry R. Paxton, 216 E. Bruce Ave., Apt. 3, Dayton, OH 45405; Les L. Smith, Box 2801, Kalamazoo, MI 49003

**North Central:** Paul D. Shannon, Box 371, Osseo, MN 55369

**Southwestern:** Michael J. Rice, III, 6015 Vicksburg, New Orleans, LA 70124; Lynne W. Babcock, 1011 Ramada, Houston, TX 77058

**Pacific:** Russell W. Miller, P.O. Box 1631, Yakima, WA 98907; Alan B. Benson, 2420 Atherton St., Apt. 1, Berkeley, CA 94704

## Officers Appointed by the Policy Board

**Executive Director:** Edmund B. Edmondson, Jr., 186 Rt. 9W, New Windsor, NY 12550

**Counsel:** David Hoffmann, 67 Wall St., 24th Floor, New York, NY 10005

**Permanent Delegate to the World Chess Federation (FIDE):** Edmund B. Edmondson, Jr., 186 Rt. 9W, New Windsor, NY 12550

**Zonal President of the World Chess Federation (FIDE), Zone V (U.S.A.):** Pearle R. Mann, 6328 W. Hope Ave., Milwaukee, WI 53216 (recommended by the Policy Board, elected by FIDE)

## Committees

### Amateur Affairs

Stephen A. Dann, Chairman, 97 Granite St., Worcester, MA 06104

Lynne W. Babcock, 1011 Ramada, Houston, TX 77058  
Michael W. Bailey, 70 Dogwood Ln., S. Windsor, CT 06074  
Jerome Bibuld, 115-80 227th St., Cambria Heights, NY 11411  
Jim Brotsos, 6563 N. Tahoma Ave., Chicago, IL 60646  
John T. Campbell, 201 Riverside Ave., Muncie, IN 47303  
Robert H. Erkes, 3518 Courtleigh Dr., Baltimore, MD 21207  
Barrett Frink, Box 17, N. Woodstock, CT 06257  
Mike Goodall, 461 Peachstone Terr., San Rafael, CA 94903  
Rand J. Nini, Box 321, Berwick, LA 70342  
Earney R. Patrick, 14636 Navajo Wy., Manteca, CA 95336  
Glenn A. Petersen, P.O. Box 334, Piscataway, NJ 08854  
Robertson Sillars, 314 14th St., Wilmette, IL 60091  
Gerbrand Van Dyk, 113 Hilltop Cir., Milford, CT 06460

### Annual Meetings (Task Force)

To be appointed

### Bylaws

To be appointed

### Chess for the Blind

Roderick J. MacDonald, Chairman, 800 Fourth St., SW, Apt. 707-S, Washington, DC 20024

James R. Slagle, Code 5407, Naval Research Laboratory, Washington, DC 20375

Don H. Smith, 2509 Glenallen Ave., Apt. 202, Silver Spring, MD 20906

### Chess Life & Review (Study Group)

Donald E. Thackrey, Chairman, 1 Dover Ct., Ann Arbor, MI 48103

George S. Cunningham, 4 Glenwood St., Orono, ME 04473

Walter Goldwater, 102 Fourth Ave., New York, NY 10003

Burt Hochberg, 186 Rt. 9W, New Windsor, NY 12550

Edgar T. McCormick, 143-B Jerome St., Roselle Park, NJ 07204

John A. Peters, III, 1310 Wellesley Ave., Apt. 101, W. Los Angeles, CA 90025

David G. Wolford, 318 S. Adams, New Carlisle, OH 45344

### Finance

Frederick S. Townsend, Jr., Chairman, 10 Bermuda Rd., Wethersfield, CT 06109

Albert Boczar, 910 Maple Ave., S. Plainfield, NJ 07080

Thomas L. Cunningham, III, 9109 Raeford Dr., Dallas, TX 75231

Arnold S. Denker, 2701 N.E. Ocean Blvd., Apt. 8E, Ft. Lauderdale, FL 33308

Robert Dockser, 30 Saddle Club Rd., Lexington, MA 02173

Bill L. McCarty, 2615 Buchanan St., Odessa, TX 79763

C. Norman Peacor, Country Club Heights, Monson, MA 01057

Joseph Pickering, 4001 Thrushwood Ln., Minnetonka, MN 55343

Michael J. Rice, III, 6015 Vicksburg, New Orleans, LA 70124

Jaime Sitrliche, P.O. Box S-4785, San Juan, PR 00905

Nicholas Stevens, 19 Oakwood Dr., Windham, CT 06280

### International Exchange

George M. Mirijanian, Chairman, 46 Beacon St., Fitchburg, MA 01420

Michael W. Bailey, 70 Dogwood Ln., S. Windsor, CT 06074

Glenn Budzinski, 34 Greenwood Dr., Monroe, CT 06468

Douglas Durasoff, 131 Fourth Ave., Milford, CT 06460

Mike Goodall, 461 Peachstone Terr., San Rafael, CA 94903

Pearle R. Mann, 6328 W. Hope Ave., Milwaukee, WI 53218

Earney R. Patrick, 14636 Navajo Wy., Manteca, CA 95336

Kamalakar B. Raut, 708 Pennwaller Rd., Savannah, GA 31410

Andrew S. Thall, P.O. Box 09163, Columbus, OH 43209

Jules F. Zell, 109 Kinloch Dr., Fredericksburg, VA 22401

### Masters Affairs

Jeffrey Kastner, Chairman, 201 W. 70th St., Apt. 15-H, New York, NY 10023

Rest to be appointed

### Membership

Lynne W. Babcock, Chairman, 1011 Ramada, Houston, TX 77058

Rest to be appointed

### Merit Awards

Carl C. Barton, Chairman, 2461 21 Ave., San Francisco, CA 94116

## Nominating

Helen S. Hinshaw, Chairman, 3000 Semmes Ave., Richmond, VA 23225

Roland J. Benoit, P.O. Box 100, Beverly, NJ 08010

Walter M. Brown, Jr., 15 Indianwood Blvd., Park Forest, IL 60466

Stephen J. Christopher, 7300 Woodlawn Ave., NE, Apt. 305, Seattle, WA 98115

Royal E. Franklin, 3072 E. Peakview Cir., Littleton, CO 80121

## Prison Chess

Paul L. Webb, Chairman, 1631 W. Mulberry Dr., Phoenix, AZ 85015

James R. Addison, Rt. 3, Box 65-A, Walterboro, SC 29488

Ken Fong, 865 Rosemount Rd., Oakland, CA 94610

## Regions & States

Larry R. Paxton, Chairman, 216 E. Bruce Ave., Apt. 3, Dayton, OH 45405

Lynne W. Babcock, 1011 Ramada, Houston, TX 77058

Carl R. Budd, 1616 Ocean Ave., 13, Santa Monica, CA 90401

Robert J. Corwin, 14 Wheeler Cir., Apt. 14, Stoughton, MA 02072

Peter H. Hopkins, Christchurch School, Christchurch, VA 23031

Robert A. Karch, Box 88217, Tukwila Br., Seattle, WA 98188

James C. Little, 3603 Kearney St., Memphis, TN 38111

Joseph W. Lux, 64-02 Madison St., Ridgewood, NY 11227

Lindsay F. Phillips, 4621 Sun Valley, El Paso, TX 79924

## Scholastic Chess

Sally H. Howes, Chairman, University Park, Apt. E-1, Easthampton Rd., Holyoke, MA 01040

John T. Campbell, 201 Riverside Ave., Muncie, IN 47303

Stephen A. Dann, 97 Granite St., Worcester, MA 06104

Casimir J. Finley, 528 High St., Newark, NJ 07102

George W. Fischer, Jr., 3143 Wilson Ave., Chicago, IL 60625

William Goichberg, 450 Prospect Ave., Mt. Vernon, NY 10553

Wilfred Goodwin, 413 Cornish Wy., Belmont, CA 94002

Richard M. Harbeck, 1201 Park Ln., Hastings, MN 55033

Gene Hickey, 3352 Charlotte, Brighton, MI 48116

John L. Marks, II, 3818 Sorci St., San Jose, CA 95124

Larry M. Matthews, 919 Downtown Blvd., Raleigh, NC 27603

William O. McElyea, P.O. Box 2556, E. Cleveland, OH 44112

William T. McGrath, Jr., 518 S. Union St., Burlington, VA 05401

Richard W. Noel, Jr., 4550 Wyoga Lake Rd., Stow, OH 44224

Gary P. Smith, 90 Gerrish Ave., Apt. 72, West Haven, CT 06512

Robert B. Tanner, 1916 Vista Dr., Modesto, CA 95355

Richard D. Temple, Rt. 5, Box 419, Alexandria, MN 56308

Douglas Van Antwerp, Box 584, Mack Rd., Middlefield, CT 06455

Michael E. Zacate, 9401 Birch, RR 2, Mokena, IL 60448

## Tournament Direction

Martin E. Morrison, Chairman, 186 Rt. 9W, New Windsor, NY 12550

William B. Abbott, 2929 E. Sixth St., Apt. 151, Tucson, AZ 85716

Stephan C. Gerzadowicz, Box 275, E. Templeton, MA 01438

Joseph W. Lux, 64-02 Madison St., Ridgewood, NY 11227

John M. Osness, 320 Columbia Cir., Waterloo, IA 50701

## Women's Chess

Lynne W. Babcock, Chairman, 1011 Ramada, Houston, TX 77058

Rest to be appointed

Those interested in serving on a USCF committee should make their interest known to the USCF Secretary.

# The USCF National Staff

The day-to-day business of the Federation is managed under the Executive Director. Thirty-one staff members are employed, both full-time and part-time. All but five of them work at the USCF National Office, a two-story building of 12,000 square feet; approximately half of this space (upstairs) is occupied by the administrative staff and the other half (downstairs) is used for inventory and supplies. The National Office is located in the Town of New Windsor, just south of the City of Newburgh, New York, approximately sixty miles north of New York City.

Edmund B. Edmondson, Jr., Executive Director  
USCF National Office  
186 Rt. 9W

New Windsor, NY 12550

Martin E. Morrison, Technical Director

Judith Misner, Membership & Ratings Supervisor

Joanne Ruscitti, Chief Membership Clerk

Anna Cheesman, Membership Clerk

Mary Sattler, Membership Clerk

Sandra Paden, Chief Rating Statistician

Bonnie Antonucci, Rating Statistician

Christine Brown, Rating Statistician

Donna Knapp, Rating Statistician

Susan Cudak, Rating Statistician

Irmgard Russek, Tournament Clerk

Margaret M. Schwab, Administrative Director

Debra Bennington, Receipts & Sales Supervisor

Illahna Wygant, Receipts Clerk

Mary-Ann Morse, Receipts Clerk

Toni-Ann Joyce, Receipts Clerk & Receptionist

Joseph Miller, Chief Shipping Clerk

Keith Bennington, Shipping Clerk

Nancy Sturtevant, Bookkeeper

Jack S. Battell, Postal Chess Director

Joan Dubois, Assistant to the Postal Chess Director

Steven Kopelman, Assistant to the Postal Chess Director

Deborah Good, Postal Clerk

Eric D. Bone, Computer Manager

Eva Moore, Secretary

Burt Hochberg, Editor of *Chess Life & Review*

Roger Cox, Assistant to the Editor

Carol Hochberg, Proofreader

Arthur B. Bisguier, Grandmaster On-Staff

Edmar J. Mednis, Coordinator of the School Chess Program

## Official USCF Logos

The USCF has three official logos:

(1) the traditional: "USCF" carried below a King's crown, both enclosed in a shield;

(2) the stylized: "USCF" carried below a stylized crown;

(3) the emblem: "USCF" carried above a chessboard in the form of a shield, with a crown projecting from top of the shield.

*The logos may not be used by affiliates or other organizations or persons without the express permission of the USCF National Office. Affiliates are not agents of the USCF for any purpose.*



Traditional



Stylized



Emblem

## Prison Chess Program

The USCF Charitable Trust donates 200 free memberships each fiscal year (April 1 through March 31) to prison inmates. The maximum is ten free memberships in a year to any one institution, a limitation which permits us to aid chess programs in twenty or more different locations.

These donated memberships are furnished to from two to ten players who are active in an institutional chess club or program. In these instances, we request that a list be provided of the inmates who are to receive free memberships (which include our monthly magazine, *Chess Life & Review*). An exact address must be provided for each prospective member on the list, including any identifying numbers necessary for mail delivery. We require that this list be submitted by a prison official, such as the Program Director, or — where regulations permit and a chess club exists — by an inmate officer of said club.

We also donate individual memberships to players in institutions which have no organized chess activity, in the belief that *Chess Life & Review* will be highly prized in such instances. Here, a request from the inmate (giving his exact mailing address) is usually sufficient.

When there are several chess players within one institution, they may — the institution's regulations permitting — organize tournaments whose results may be submitted for national USCF rating. Only affiliated clubs may conduct USCF-rated tournaments, but upon request we will donate a one-year affiliation in lieu of one of the memberships to which a group may be entitled under this program. Affiliation entitles the club to purchase additional memberships at discounted rates.

Interested individuals or institutions may write to the National Office for Membership Forms, Affiliation Applications and Affiliation Information sheets, which should be filled out and returned for donations. Applications for either memberships or affiliation may include renewals. We are not authorized to donate postal chess entries.

The U.S. Chess Federation itself donates chess sets, boards and books to prisons; our experience shows that these materials are welcomed as donations by chess clubs or individual players in correctional institutions. In order to make such donations of chess materials, we need notification of the player's or institution's requirements and the address to which the donated materials should be sent.

The individual USCF member is urged to make his own contribution to this program by donating extra items of chess equipment or books to one of our prison affiliates listed below. Local affiliates and state chapters may institute more wide-ranging programs for the promotion of prison chess.

**Danbury Federal Prison:** Rt. 37, Danbury, CT 06810

**Yardville Chess Club:** c/o Richard Martinetti, P.O. Box 1, Yardville, NJ 08620

**New York City Correctional Institution for Women:** c/o Essie Murphy, 1515 Hazen St., East Elmhurst, NY 11370

**Auburn Correctional Facility:** c/o Mike Dintz, Recreation Dept., 135 State St., Auburn, NY 13021

**Attica Chess Club:** c/o I. W. Snearly, Attica Correctional Facility, Attica, NY 14011

**Chester Chess Club:** c/o John Fleck, Recreation Supervisor, Lewisburg Penitentiary, Lewisburg, PA 17837

**M.C.T.C. Chess Club:** Maryland Correctional Training Center, Hagerstown, MD 21740

**Vapen Chess Club:** c/o C. E. Stevens, P.O. Box 27264, Richmond, VA 23261

**Kirkland Chess Club:** c/o G. W. Miller, 3-A-22, Kirkland Correctional Institute, 4344 Broad River Rd., Columbia, SC 29210

**Chess Mates Chess Club:** c/o Fred Smith, Recreation Supervisor, U.S. Penitentiary, Atlanta, GA 30315

**In Mates Chess Club:** Athletic Director, Georgia State Prison, Reidsville, GA 30453

**Chatham Correctional Institution Chess Club:** c/o Jim Goodwin, Counselor, P.O. Box 7150, Garden City, GA 31408

**Chess Mates Club of Lee Correctional Institute:** c/o Suleiman Azeez, Rt. 2, Box 139, Leesburg, GA 31763

**Penned Knights Chess Club:** c/o Recreation Supervisor, Federal Correctional Institution, Tallahassee, FL 32304

**Kentucky State Reformatory Chessman:** c/o R. Willhite, Director, Box 188, La Grange, KY 40031

**Stateville Chess Club:** c/o Jesse Vail, Box 112, Joliet, IL 60434

**George N. Leighton Chess Club:** c/o James D. Perruquet, M-38044, P.O. Box 711, Menard, IL 62259

**Knights of Armor Chess Club:** c/o Richard H. Garcia, 25177, Box 900, Jefferson City, MO 65101

**Missouri Training Center Chess Club:** c/o Tom Ervin, IA-18, Box 7-16360, Moberly, MO 65270

**Castle Kings Chess Club:** c/o Calvin Rowe, P.O. Box 97, Stewart, NY 89437

**Passed Pawns Chess Club:** c/o J. La Du, Oregon State Penitentiary, 2605 State St., Salem, OR 97310

## School Chess Program

The USCF operates a School Chess Program, which provides full funds for a specially selected U.S. master to appear at a school assembly, drop in on the school chess club, give a lecture, offer a simultaneous exhibition (sets and boards must be provided by the student opponents) or mingle with students, faculty and administrators in any way the sponsoring school wishes. The master will usually be able to remain in each school on a tour for the better part of a day.

The primary aim of this program is high schools. However, junior high and elementary schools with chess clubs or chess interest may also be included in the program. Colleges are not included in the program at this time.

The USCF pays the master's fee and transportation. Any assistance that can be offered to the master by the school in the way of lodging, food or transportation is welcome, though not obligatory. Such assistance will enable the USCF to send masters to more schools than would otherwise be possible.

Schools interested in hosting a master may contact the Coordinator of the School Chess Program directly or may work through a local chess organizer. The USCF will work directly with the school or through a local chess organizer, whichever is the preferred method in each case. Each interested school should provide the following information.

(1) What is the school's academic schedule (days school is in session and hours of session)?

(2) What is generally the most convenient time of day and day of the week for the master's visit?

(3) Where is the school located geographically (if in a small town), and how can it be reached by public transportation or car?

(4) Are other schools (or chess clubs) in the area interested in participating in the program?

While on his school tour, the master will also be available for paid lectures, exhibitions, lessons, etc. We hope that local affiliates will be able to sponsor or arrange such activities in order to take full advantage of the master's presence in the area for chess promotion. Financial arrangements are worked out directly with the master, and the USCF will be happy to provide his address and schedule.

Edmar J. Mednis  
Coordinator, School Chess Program  
41-42 73 St.  
Woodside, NY 11377

## Title VII: Federal Aid for School Chess

A booklet of materials designed to encourage and assist chess promoters to introduce chess programs into the public schools with federal aid appropriated under Title VII of Public Law 92-318 has been prepared and is available from the Technical Director at the USCF National Office. Teachers and administrators in the public schools are in a particularly good position to introduce such courses in an effort to spread chess throughout public schools in the United States.

Those who have a serious interest in working on this project and who are willing to approach local schools and develop courses are invited to write for the 57-page booklet, enclosing \$1.00 to offset a small part of the cost of duplicating and mailing the booklet.

## Grandmaster On-Staff

The USCF Grandmaster On-Staff is available for simultaneous exhibitions, lectures or other chess activities at schools above the high-school level, hospitals, military bases, community centers, recreation departments and other institutions. This service is rendered without charge under the auspices of the USCF, but if it is necessary for the grandmaster to stay overnight or to utilize transportation other than automobile, the costs of lodging, food and transportation must be assumed by the host institution.

The grandmaster will also be available to area clubs in the evening. The fee is to be arranged with him, since no travel expenses are required.

Interested institutions may contact the grandmaster directly to arrange an appearance.

Arthur B. Bisguier  
Grandmaster On-Staff  
16 Lake Shore Dr., W  
Rock Hill, NY 12775

# Tournament Clearinghouses

The USCF recommends that tournament organizers, especially new organizers, cooperate with each other to anticipate conflicting tournaments with the help of area clearinghouses. The submission of a "Tournament Life" announcement should be the last step in the process of scheduling a tournament — after the date has been coordinated with the dates of other organizers through the clearinghouses.

The USCF National Office arranges for recognized clearinghouses to assist organizers to avoid conflicting tournaments. In return for being published in this list and being provided with information on tournaments in their areas, the clearinghouses undertake to notify organizers of possible conflicts and to help organizers schedule nonconflicting tournaments. Though the clearinghouses are in no way agents of the USCF nor have binding authority to establish dates or settle conflicts, we urge the voluntary cooperation of organizers with the clearinghouses for the avoidance of conflicts.

Clearinghouses are designated by the first three digits of the ZIP-code areas they serve. Proposed changes in this list should be sent to the Technical Director at the USCF National Office.

**010-059:** Stephan C. Gerzadowicz, Box 275, E. Templeton, MA 01438

**060-069:** Frederick S. Townsend, Jr., 10 Bermuda Rd., Wethersfield, CT 06109

**070-089:** Anthony P. Cottell, 170 Helm Ave., Wood-Ridge, NJ 07075

**090-149:** Jeremy A. Graham, 10 W. Tenth St., New York, NY 10011

**150-154, 156-157, 160-162:** Earl Clary, Jr., 835 Lindsay Rd., Carnegie, PA 15106

**220-246:** Helen S. Hinshaw, 3000 Semmes Ave., Richmond, VA 23225

**270-289:** Alan H. Lipkin, 2635 Glenhaven Ln., Winston-Salem, NC 27106

**300-319:** L. Thad Rogers, 3055 General Lee Rd., Macon, GA 31204

**320-339:** John R. Claxton, P.O. Box 2901, Orlando, FL 32803

**400-427:** Rodney Wright, P.O. Box 70226, Riverfront Sta., Louisville, KY 40270

**450-452:** David Moerer, P.O. Box 30072, Cincinnati, OH 45230

**460-479:** Cleo R. Mooday, RR 4, Crawfordsville, IN 47933

**600-606:** Harold J. Winston, 1400 E. 55th Pl., No. 805-S, Chicago, IL 60037

**607-629:** Garrett H. Scott, 1601 W. Hovey, Normal, IL 61761

**630-659:** William S. Merrell, Rt. 8, Columbia, MO 65201

**660-679:** Robert C. Fuller, 3000 Sowers Ct., Topeka, KS 66604

**730-749:** Ronald Sears, 708 S. Gardner, Wynnwood, OK 73098

**750-799:** Clarence Callaway, Jr., P.O. Box 1576, Irving, TX 75060

**850-865:** Myron A. Lieberman, 1444 W. Sixth St., Tempe, AZ 85281

**900-931, 933-935:** David C. Argall, 1300 Ballista, La Puente, CA 91744

**932, 936-937, 952-953:** Steven N. Morford, 2525 Tallent Dr., Modesto, CA 95355

**938-951, 954-960:** John H. Larkins, 5804 Ocean View Dr., Oakland, CA 94618

**980-994:** Kennedy O. Poyser, 3138 Overhulse, NW, No. 147, Olympia, WA 98502

An updated version of this list appears monthly in *Chess Life & Review*.

## The USCF Rating System

The following system is used for rating over-the-board games only (not postal, telex, etc.). The postal chess rating system is totally separate from the over-the-board system and is explained separately in a pamphlet sent to each postal-chess entrant.

The USCF National Office administers the USCF Rating Regulations adopted by the USCF Board of Delegates or Policy Board.

Unofficially calculated ratings on the basis of these Rating Regulations will produce only approximations of official ratings. Because there is a great fluctuation in the ratings of new and provisionally rated players and because the official calculations are based not on last-published ratings but on the current, ever-changing ratings updated after each tournament, unofficial calculations may differ substantially from the official ones.

A combined "bonus-feedback schedule" is expected to be implemented in the future, together with several other modifications of the USCF Rating System as published here. When these modifications are implemented, an announcement will be made in *Chess Life & Review* and a new set of USCF Rating Regulations and Examples of Rating Calculations will be published.

### USCF Rating Regulations

1. a) All games played in USCF-rated events (with or without clocks) are rated, including games won by time-forfeit, games won by failure to appear after adjournment, and games played by a player who subsequently withdrew or was not permitted to continue. Games in which the opponent made no move are considered as unplayed and are not rated.

b) The duration of the first time-control period must be at least one-half hour for each player, and the time-limit of any control period must not be faster than an average of two minutes per move (30 moves per hour) in a National Tournament or one minute per move (60 moves per hour) in a Local

or Intermediate Tournament, except when a time penalty has been imposed. The USCF Policy Board may make exceptions so that some National tournaments may be played at the faster rate allowed Local and Intermediate tournaments. If a faster time-limit than an average of two minutes per move is used in any tournament, it must be announced in advance.

2. All events are normally rated in chronological order with current ratings from the USCF files. When an event is rated, the ratings produced become the new current ratings and are used for the next calculations. *NOTE: Published ratings are those current as of the closing date of the list.*

3. Individual matches are rated with the following restrictions:

a) No player may go up or down through more than one rating class within a five-year period.

b) The maximum change allowed as a result of a match is 50 points.

c) Match results are not to be taken into account when a player is being considered for invitation to a tournament unless such results are confirmed in tournament play subsequent to the match.

d) Match reports must be validated by a certified tournament director, or the players must swear an affidavit notarized by a notary public.

e) Both players in an individual match must be rated, and the difference in ratings must not exceed 400 points.

4. The equations used to calculate ratings are as follows:

a) For previously unrated and provisionally rated players, the linear approximation of the performance rating (the rating resulting from a single event is known as the performance rating for that event) is

$$R_p = R_c + \frac{400(W-L)}{N}$$

N



where  $R_n$  is the performance rating,  $R_o$  is the average rating of the competition (the player's opponents),  $W$  is the number of wins,  $L$  is the number of losses, and  $N$  is the total number of games played in the event.

b) For players with established ratings, the linear approximation of the new rating is

$$R_n = R_o + 16(W-L) + .04 (\Sigma D)$$

where  $R_n$  is the (new) postevent rating,  $R_o$  is the (old) preevent rating,  $W$  is the number of wins,  $L$  is the number of losses, and  $(\Sigma D)$  is the algebraic sum of the differences between the ratings of the opponents and the player. *NOTE: individual differences cannot exceed 350; i.e., if your rating is 1800 and your opponent's is 2300, use 350, not 500.* In applying the equation to players with ratings of 2300 and over, the coefficients 16 and .04 are reduced to 8 and .02 respectively.

c) For players with established ratings whose preevent ratings are (a) 1200 or above or (b) below 1200, in a case where the player does not meet the conditions for applying Regulation 6, bonus points are awarded after a tournament whenever their rating gain exceeds a specified limit. The limit is set at 24 points for tournaments of four rounds or fewer actually played, and two points higher for each additional round (i.e., 26 for five rounds, 28 for six rounds, etc.). The bonus rate is one point for each point gained over the limit. For masters whose rating changes are computed by the  $8/.02$  formula, the bonus limit is cut in half; i.e., twelve points for four rounds, thirteen points for five rounds, etc.

d) For players who start an event below 2300 and then in that tournament go above 2300, the gains are computed normally — i.e., with the  $16/.04$  formula — however, the portion of increase over 2300 is cut in half. (For example, if a player goes from 2290 to 2360 with normal and bonus gains, his new rating is shown as 2330.)

5. When players are rated, previously unrated players are rated by equation 4a for their first 24 games. During this period their ratings are considered *provisional*. Beginning with the event in which they play their 25th actually played and rated game, their ratings become *established* and are computed by equation 4b and, if appropriate, 4c or 4d. *EXCEPTION: When Regulation 6 is applied, equation 4a is used.*

6. For a player with a preevent rating below 1200 who has completed at least five rounds in an event:

a) If the player's performance rating in the event is lower than his preevent rating, his new rating will be computed normally by whichever equation (4a or 4b) applies.

b) If the player's performance rating in the event is higher than his preevent rating but below 1200, the performance rating becomes his new rating.

c) If the player's performance rating in the event is above 1200, his preevent rating is assumed to be 1200, and his new rating will be computed by whichever equation (4a or 4b) applies.

7. When an event is rated, performance ratings under equation 4a are obtained, first for unrated players, then for provisionally rated players. After this, the previously unrated players are rerated on the basis of the rating of their opponents just calculated. Finally, the players having established ratings are rated, first those with ratings below 1200, then those with ratings 1200 and above.

A game with a previously unrated or provisionally rated player enters the rating of a player with an established rating on the basis of the opponent's postevent rating. In the case of players having established ratings below 1200,

a) if the player's performance rating in the event is lower than his preevent rating, his preevent rating is used in the rating of the players having established ratings 1200 and above;

b) if the player's performance rating in the event is higher than his preevent rating, but below 1200; or

c) if the player's performance rating in the event is above 1200, his postevent rating is used in the rating of players having established ratings 1200 and above.

*NOTE: Events can be rated if at least one of the players has a rating. If none of the players has a rating, the report is put aside for rating later, when at least one of the players gains a rating.*

8. A player may become a master only upon having achieved that rating in tournament play against experts or masters. Similarly, a master may become a senior master only upon having achieved that rating in tournament play against masters or senior masters.

### Examples of Rating Calculation For a Previously Unrated Player

In a player's first event, he is given a "performance" rating for each game he plays. When he wins, his performance rating for that game is his opponent's rating plus 400; when he draws, his performance rating for that game is equal to his opponent's rating; and when he loses, his performance rating for that game is his opponent's rating minus 400. These performance ratings are then averaged to determine the players provisional rating.

*Example 1:* You play five games in your first rated event. You defeat an opponent rated 1350, lose to one rated 1700, lose to one rated 1400, draw with one rated 1600 and lose to one rated 1450. Your performance ratings are 1750, 1300, 1000, 1600 and 1050 respectively. Dividing the sum of these performance ratings (6700) by the number of games (5) gives 1340. This is your initial provisional rating.

### For a Provisionally Rated Player

A provisionally rated player is one who has played between one and 24 games, including the event being rated. The method of computation is identical with that used for the unrated player, except that the performance ratings from the event being rated are averaged with the performance ratings from all previous events.

#### Provisional Rating 1200 or above

*Example 2:* Your provisional rating is 1700, based on ten games. In your next event you play five games; your performance ratings are 1850, 1600, 1950, 2100 and 1450. The sum of these performance ratings is 8950. The sum of the performance ratings of your previous ten games is  $10 \times 1700$  or 17000. Thus the sum of all 15 performance ratings is  $17000 + 8950$  or 25950. This sum divided by the number of games (15) gives 1730, which is your new provisional rating.

#### Provisional Rating Below 1200

a. Performance rating in the event is lower than preevent rating (Rule 6a). Compute as in Example 2.

b. Performance rating in the event is higher than preevent rating but below 1200 (Rule 6b).

*Example 3:* Your provisional rating is 1100, based on five games. In your next event you play five games, with your performance ratings being 1400, 1100, 1150, 900 and 1200. The sum of these is 5750, which, divided by the number of games (5), gives you a performance rating for the event of 1150. Since 1150 is higher than your preevent provisional rating (1100), your new provisional rating is 1150.

c. Performance rating in the event is above 1200 (Rule 6c).

*Example 4:* Your provisional rating is 1080, based on five games. In your next event you play five games, with your performance ratings being 1750, 1300, 1000, 1600 and 1050. The sum of these performance ratings is 6700, which, divided by the number of games (5) gives you a performance rating for the event of 1340. This means that you must use an assumed preevent provisional rating of 1200 in computing your new provisional rating. The result is that the sum of the performance ratings for the previous five games becomes  $5 \times 1200$  or 6000.

The sum of all 10 performance ratings then becomes  $6000 + 6700$  or  $12700$  which, divided by the number of games (10), gives a new provisional rating of 1270.

### For a Player with an Established Rating

A player with an established rating is one who has played 25 or more games, including the event being rated.

**To compute your new rating when you have an established rating of 1200 or above:**

A) Add up the ratings of your opponents. If any are more than 350 points above or below you, consider them to be only 350 points above or below.

B) Multiply your rating by the number of games you played in the event.

C) Subtract B from A. The result may be negative.

D) Take 4% of C (2% if your rating is 2300 or above). The result may be negative.

E) Subtract your losses in the event from your wins and multiply the result by 16 (by 8 if your rating is 2300 or above). The result may be negative.

F) If the sum of D and E is positive and exceeds the specified limit in Rule 4c, add one point for each point gained over the limit.

G) Your new rating equals the algebraic sum of D, E, F and your old rating.

*Example 5 (without bonus points):* You have an established rating of 1800. You then play six games in an event, winning  $3\frac{1}{2}$  and losing  $2\frac{1}{2}$ . Your opponents are rated 1500, 1850, 1750, 2200, 1800 and 1650. Following the steps A through G gives:

A)  $1500 + 1850 + 1750 + 2150 + 1800 + 1650 = 10700$ .

The 2200 rating is counted as 2150 (350-point difference).

B)  $1800 \times 6 = 10800$ .

C)  $10700 - 10800 = -100$

D)  $4\% \text{ of } -100 = -4$ .

E)  $3\frac{1}{2} - 2\frac{1}{2} = 1, 1 \times 16 = 16$ .

F) No bonus points are involved. ( $-4 + 16 = 12$ , which does not exceed the 28-point limit for a six-round tournament.)

G)  $-4 + 16 + 0 + 1800 = 1812$  which is your new rating.

*Example 6 (with bonus points):* You have an established rating of 1900. You then play six games in an event, winning  $2\frac{1}{2}$  and losing  $3\frac{1}{2}$ . Your opponents are rated 2000, 2100, 2300, 2250, 2200 and 1950. Following the steps gives:

A)  $2000 + 2100 + 2250 + 2250 + 2200 + 1950 = 12750$ .

The 2300 rating is counted as 2250 (350-point difference).

B)  $1900 \times 6 = 11400$ .

C)  $12750 - 11400 = 1350$ .

D)  $4\% \text{ of } 1350 = 54$ .

E)  $2\frac{1}{2} - 3\frac{1}{2} = -1, -1 \times 16 = -16$ .

F) Bonus points are involved ( $54 + \text{minus } 16 = 38$ , which exceeds the 28-point limit for a six-round tournament):  $38 - 28 = 10$ .

G)  $54 + \text{minus } 16 + 10 + 1900 = 1948$ , which is your new rating.

**To compute your new rating when you have an established rating below 1200:**

A) Obtain your performance rating for the event using Rule 4a.

B) Determine whether Rule 6a, 6b or 6c applies.

C) Compute your new rating as follows:

*Rule 6a (Player's performance rating for event is lower than preevent rating)—compute as in Example 5.*

*Rule 6b (Player's performance rating for event is higher than preevent rating but below 1200)—your performance rating for event becomes your new established rating.*

*Rule 6c (Player's performance rating for event is above 1200)—compute as in Example 5 with 1200 as your preevent rating.*

## Major USCF Tournaments Open for Bidding

There is nothing like a major tournament to create or vitalize chess interest in an area. USCF members welcome the opportunity to play in or to spectate at such an event, while the publicity resulting from a major tournament heightens public awareness of chess in the area and through media coverage reaches many potential new members, not only for the USCF but also for the local or state organization. The entire chess structure is thereby strengthened, and all of the events in the area throughout the years are better attended.

Geographic rotation of these events is highly desirable. As a national organization, the USCF does not want to concentrate major tournaments in a few cities or areas but to spread them across the United States.

### List of Major Tournaments

- U.S. Championship
- U.S. Junior Championship
- U.S. Women's Championship
- U.S. Open Championship
- National Open Championship
- U.S. Amateur Championship
- U.S. Junior Open Championship
- U.S. Team Championship
- National High School Championship
- U.S. Intercollegiate Team Championship
- and Pan-American Intercollegiate Team Championship
- U.S. Intercollegiate Individual Championship
- U.S. Class Championship
- Masters Open
- U.S. Senior Championship
- USCF International Tournament
- Futurity (FIDE-Rated) Tournament
- Regional Young-Player Tournaments

### Submitting a Bid

Potential bidders on these tournaments should first study carefully the General Requirements below. Specific requirements of any tournament are available from the USCF National Office, which offers bidders technical guidance in preparing bids. Fully prepared bids, based in detail upon the fifteen General Requirements and any specific requirements applicable to a particular tournament, should be sent in writing with the complete supporting documents appropriate (letter of agreement with the hotel, agreement on room rates, diagrams of the playing area, brochures on the site and surrounding facilities, menus, light-meter readings, etc.) to the USCF Secretary with a copy to the National Office.

Bids not in writing or which lack the supporting documentation will very likely prove unacceptable. The key to a successful bid is thorough preparation of all details in advance and an organized, complete written presentation.

### General Requirements

#### Playing Site

1. The capacity should be sufficient, without crowding, for the anticipated number of players. A general guideline for capacity is to allow 20-25 square feet per player.
2. The site should be free of noise, including any noise from conflicting groups or activities which may be using the same building during the hours of play. The floor of the playing site should be carpeted or made of sound-cushioning material.
3. The playing area should have adequate climate control, air conditioning or heating as required, and excellent ventilation.
4. Lighting should be fluorescent, preferably with recessed fixtures which have a white plastic covering flush with the ceiling. Illumination should approximate that in a modern bank or insurance office (80-120 footcandles or 800-1200 lucas). If the degree of light is controlled by a

reostat, so much the better. Illumination should be checked, preferably with a light-meter, at the time of day when the tournament will be played.

5. Preferably the playing site and the sleeping rooms should be at the same location. If the playing site is in a different location from the sleeping rooms, transportation should be easily accessible before, during and after play.

6. The playing site and sleeping rooms should be arranged with a reliable hotel, university, etc., which will unquestionably provide the rooms and services agreed to on the dates of the tournament.

7. Food should be available at or within easy walking distance of the playing site and sleeping rooms before, during and after play.

8. An additional room for analysis, large enough to meet the needs of the anticipated number of players, should be available. Depending upon the particular tournament, a demonstration room or meeting rooms may be required.

### Sleeping Rooms

9. The sleeping rooms should have individual climate control, air conditioning or heating as required.

10. A reduced room rate should be secured for the players. In the case of invitational tournaments, it is highly desirable that the single and double rates be equal or nearly equal.

11. A number of complimentary rooms, depending upon the anticipated number of players and the number of officials required, should be provided.

12. Billing for the rooms of players in noninvitational events should be arranged so that each player may easily pay his individual bill upon departure.

### Local Committee

13. A sufficient number of local organizers and workers who are not playing in the tournament should be available to assist before, during and after the tournament. It is advisable that an organizer who has not been used extensively before and during the tournament be available to approach with vigor the very important follow-up requirements. Local workers who have an aptitude to handle specialized tasks, such as maximizing the publicity and media coverage of the tournament, are a plus.

14. Assistant tournament directors from the local area are sometimes desired. Because of certification requirements and the special expertise necessary to direct these tournaments, the selection of the Chief Tournament Director is made entirely by the USCF and should not be included as part of the bid.

### Financing

15. The financial requirements expected of the sponsor vary greatly with each particular tournament. In all cases, some donation to cover tournament expenses is required or desirable. When the bidder provides significant financial assistance for a noninvitational tournament, any profit is usually shared between the bidder and the USCF.

## ALGEBRAIC NOTATION

The USCF Board of Delegates adopted the following resolution in 1972:

Whereas, The World Chess Federation (FIDE) has recommended that all affiliated federations promote the use of the algebraic chess notation as much as possible, in an attempt to promote a universal system of notation;

Whereas, Great Britain, Canada, and many U.S. chess publications have begun or completed conversion to the algebraic system;

Whereas, It has been shown that the algebraic notation is easier to teach beginners and more suited to the requirements of the mass media than the descriptive notation; and

Whereas, Surveys have shown that by the use of the algebraic notation the cost and length of chess books can be cut by one-third and gain a world-wide audience and space could be conserved in *Chess Life & Review* at no additional cost;

Resolved, That the USCF begin an algebraic education program, consisting of an algebraic diagram and explanation beginning with the January 1973 issue of *Chess Life & Review* and the 1973 USCF Catalog.

During the 1974 FIDE Congress, the Permanent Commission for the Rules of Play was charged with the task of submitting a proposal concerning a uniform chess notation to be recommended for official FIDE tournaments and matches and for chess literature and periodicals.

The Rules Commission studied the matter very carefully and decided unanimously to choose the so-called algebraic notation for this purpose. The General Assembly of the 1976 FIDE Congress will vote on the proposal.

The Rules Commission remarked in its

proposal that the so-called algebraic chess notation was undoubtedly the simplest notation extant. Young players especially show a marked preference for the algebraic system. This is fortunate because it is predictable that the algebraic system will replace the descriptive system in any case within a few decades. The proposal of the Commission therefore intends only to speed up a process which is already well under way.

The introduction of a uniform system of notation would greatly benefit chess literature and chess periodicals. In addition, it is much easier to play over a game without a chessboard when the score is in algebraic notation than when it is in descriptive notation.

The Rules Commission proposes that from the 1980 FIDE Congress on, only the algebraic notation system be acceptable for FIDE tournaments, matches and other competitions, but there can be no doubt that the new Supplement No. 1 to the FIDE Laws of Chess will have its effect on all tournaments, whether international, national or regional.

In order to educate the chess public to the use of the algebraic chess notation, the following brief résumé is published. For further details, the reader is invited to consult the *Official Rules of Chess*, available from the USCF Catalog.

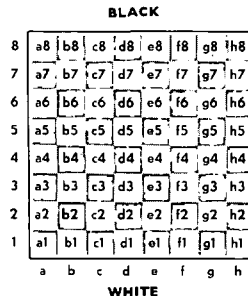
\*\*\*

The horizontals (ranks) are numbered from 1 to 8, starting from the rank nearest White. The verticals (files) are lettered from a to h, starting at White's left (the QR-file in algebraic is the a-file). The intersections of the horizontals and verticals give the individual squares their names. Pawn moves are recognized by the absence of a capital letter to designate the piece being moved.

The reader is invited to study the sample game and diagram below and to get into the habit of using the algebraic system.

Algebraic		Descriptive	
White	Black	White	Black
1 d4	Nf6	1 P-Q4	N-KB3
2 c4	e6	2 P-QB4	P-K3
3 Nc3	Bb4	3 N-QB3	B-N5
4 Bd2	O-O	4 B-Q2	O-O
5 e4	d5	5 P-K4	P-Q4
6 exd5*	exd5	6 KPXP	PxP
7 cxd5	Bxc3	7 PxP	BxN
8 Bxc3	Nxd5	8 BxB	NxP
9 Nf3	b6	9 N-B3	P-QN3
10 Qb3	Nxc3	10 Q-N3	NxB
11 bxc3	c5	11 PxN	P-B4
12 Be2	cxd4	12 B-K2	PxP
13 Nxd4	Re8	13 NxP	R-K1
14 O-O	Nd7	14 O-O	N-Q2
15 a4	Nc5	15 P-QR4	N-B4
16 Qb4	Bb7	16 Q-N4	B-N2
	etc.		etc.

\*The shorter form is simply ed. Sometimes a colon replaces "x" for captures, and "+" is often used for checks; however, the briefest form, which is gaining popularity among some editors and writers, omits symbols both for captures and for checks.



# Chess Magazines and Columns

The following list of chess magazines and columns includes only those for which a current sample copy, published within the last six months, has been sent to the Technical Director at the National Office. Magazine editors and columnists are requested to send subscriptions or at least a current sample copy every six months, for registration on the official list. Registered magazines and columns are placed on the USCF's press-release list and are listed in *Chess Life & Review* and the *USCF Yearbook*. Requests for sample copies of magazines should be made to the individual editor and be accompanied by 50¢ in stamps or coin; replies are the responsibility solely of the individual editor.

Members should consult their local and state magazines and columns for the results of those tournaments of a local nature which cannot be included in *Chess Life & Review* because of space limitations. An asterisk (\*) indicates a State Chapter's magazine.

## U.S. and Canadian Chess Magazines

**Chess Horizons\***: George M. Mirijanian, 46 Beacon St., Fitchburg, MA 01420  
**NECA Journal**: Stephan C. Gerzadowicz, Box 275, E. Templeton, MA 01438  
**Amateur Chess**: Stephen A. Dann, 97 Granite St., Worcester, MA 01604  
**Chess Courier**: Mark H. Singer, 89 Round Top Rd., Framingham, MA 01701  
**Chessplayer**: Richard S. Bennett, 6 Highland Terr., Marblehead, MA 01945  
**Rhode Island Chess Bulletin\***: W.T.L. Grover, Box 241, Annex Sta., Providence, RI 02901  
**Notation\***: James Quirk, Box 1353, Portland, ME 04104  
**Hartford Chess Club Newsletter**: Nicholas Stevens, 19 Oakwood Dr., Windham, CT 06280  
**Connecticut Chess Newsletter**: Arthur W. Breen, P.O. Box 544, Wallingford, CT 06492  
**Waterbury Chess Club Bulletin**: Rob Roy, 54 Kreger Dr., Wolcott, CT 06716  
**B.C. Chess**: Roy Greenberg, 255 Oradell Ave., Paramus, NJ 07652  
**Castled King\***: Susan Benoit, P.O. Box 100, Beverly, NJ 08010  
**Chess Life & Review**: Burt Hochberg, 171 W. 79th St., Apt. 34, New York, NY 10024  
**ICLA Bulletin**: Jorge Medina, 205 W. 103rd St., No. 3A, New York, NY 10025  
**Good Knight**: Thomas Kapp, 27 Gedney Esplanade, White Plains, NY 10605  
**Westchester Chess Club Newsletter**: Lawrence B. Eichler, 110 Paine Ave., New Rochelle, NY 10804  
**Marshall Swindle**: Gary R. Forman, 1325 E. 103rd St., Brooklyn, NY 11236  
**SASIAc**: Harvey Simms, 153 E. Beech St., Long Beach, NY 11561  
**Chess In New York State**: George Sicherman, 116 Hartwell Rd., Buffalo, NY 14216  
**Pennswoodpusher\***: Bobby G. Dudley, 107 Crosstree Rd., Coraopolis, PA 15108  
**En Passant**: Ted Greiner, 1761 Fairmont St., New Kensington, PA 15608  
**West Chess**: Roy H. Sweet, 605 W. Market St., No. 21, West Chester, PA 19380  
**Flanchetto**: Russell A. Haag, 11 Mitchell Cir., Newark, DE 19711  
**Gamesman, Gaming News**: Donald L. Miller, 12315 Judson Rd., Wheaton, MD 20906  
**Maryland Chess Newsletter\***: Louis R. Charvenet, 11 Sussex Rd., Silver Spring, MD 20910  
**DC Chess League Bulletin**: Walter Stromquist, 6001 Arlington Blvd., No. 201, Falls Church, VA 22044  
**Newsletter**: Woodrow Harris, 3000 Semmes Ave., Richmond, VA 23225  
**Carolina Gambit\***: Leroy S. Taylor, Jr., Box 396, Carrboro, NC 27510  
**Advisory Board Record**: Steven Buntin, P.O. Box 2066, Chapel Hill, NC 27514  
**Kxe6s Verein Newsletter**: Lori Buntin, P.O. Box 2066, Chapel Hill, NC 27514  
**SCCA News\***: Charles H. Walter, 4720 Brenthaven Rd., Columbia, SC 29206  
**Jacksonville Chess Club Newsletter**: Daren L. Dillinger, 4205 Notter Ave., Jacksonville, FL 32206  
**Gables Chess Notes**: LeRoy G. Collins, Jr., 1216 Asturia Ave., Coral Gables, FL 33134  
**CINCL '76**: George R. Gill, Jr., 1730 N.E. 160th St., N. Miami Beach, FL 33162  
**Florida Chess News\***: Robert G. Miller, P.O. Box 141, Delray Beach, FL 33444

**Alabama Chess Antics\***: Bill Bryan, 342 Third St., Boylston, Montgomery, AL 36110  
**Music City Chess**: Joe Roberdeau, 1114 Forrest Ave., Nashville, TN 37206  
**Tennessee Chess News\***: Peter P. Lahde, 2609 Sailboat Ct., Nashville, TN 37217  
**Mid-South Chess Advocate**: John F. Hurt, 1063 S. Perkins Rd., Memphis, TN 38117  
**Mississippi Chessletter\***: Warren Porter, Box 12222, Jackson, MS 39211  
**Chess Club News**: Paul Miller, Union Activities Off., BGSU, Bowling Green, OH 43403  
**Ohio Chess Bulletin\***: Alan R. Kirschner, 4870 Overland Pkwy., Toledo, OH 43612  
**Toledo Chess Pieces**: Gerri Cochrane, P.O. Box 6564, Toledo, OH 43612  
**Mini-Might**: James R. A. Schroeder, P.O. Box 5268, Cleveland, OH 44114  
**Cleveland Chess Bulletin**: Robert McGuire, 1291 Winston Rd., S. Euclid, OH 44121  
**J'Adoube, New Cincinnati Chess Club Plasticpusher**: Dave Moeser, P.O. Box 30072, Cincinnati, OH 45230  
**GCHSCL Bulletin**: Marilyn Palmisano, 807 Pedretti Ave., Cincinnati, OH 46617  
**Amazing Pawnhawk**: Ronald B. Daniel, P.O. Box 39042, Cincinnati, OH 45239  
**Dayton Chess Club Review**: Richard Buchanan, 235 Kenwood Ave., Dayton, OH 43405  
**Springfield Chess Federation Newsletter**: John S. Abma, Dept. of Psych., Wittenberg University, Springfield, OH 45501  
**South Bend Chess Club Bulletin**: Samuel Shapiro, 305 Wakewa, South Bend, IN 46617  
**Indiana's Chess Quarterly\***: Cleo R. Mooday, R.R. 4, Crawfordsville, IN 47933  
**Michigan Chess\***: Les L. Smith, Box 2801, Kalamazoo, MI 49003  
**Upper Peninsula Chess Bulletin**: Merle Parsons, 719 Walker St., Iron Mountain, MI 49801  
**Chess In Dubuque**: Carroll E. Schmidt, 1925 Jeffrey Dr., Dubuque, IA 52001  
**Chess Arts, Iowa Chess News\***: Robert B. Long, 1506 Harrison St., Davenport, IA 52803  
**Zugzwang**: David D. Allen, Box 206, Sturgeon Bay, WI 54235  
**Chess Chat**: Leonard B. Archer, Jr., 106 Washington Ave., Oshkosh, WI 54901  
**Merit Point News**: Richard M. Harbeck, 1201 Park Lane, Hastings, MN 55033  
**Minnesota Chess Journal\***: Warren Stenberg, 2012 Cedar Lake Pkwy., Minneapolis, MN 55416  
**Northern Chess News**: Bruce Mavis, 6006 Halifax Pl., Brooklyn Center, MN 55429  
**South Dakota Chess Association Bulletin**: Gary E. Wallace, Box 1261, Pierre, SD 57501  
**Chess Talk**: Craig Nansen, Magic City Campus, Minot, ND 58701  
**GLEEP**: David Lee, Chess Club, Norris Center, Northwestern University, Evanston, IL 60201  
**Woodpusher**: Mark Epstein, 653 Hinman, Evanston, IL 60202  
**Chicago Industrial Chess League Bulletin**: Paul E. Weston, 1741 Violet St., Aurora, IL 60505  
**Chess Mate**: Ronald W. Millard, 1008 Knollcrest Dr., Washington, IL 61571  
**Missouri Chess Bulletin\***: Doug P. Breckenridge, 4158 Oak, Kansas City, MO 64111  
**Queen City Chess Bulletin**: Frank B. Elley, Jr., P.O. Box 4382, G. S., Springfield, MO 65804  
**KCA Bulletin\***, **Wichita Chess Club Bulletin**: Charles R. Bell, 116 N. Hoover, Wichita, KS 67212  
**Ohman Newsletter**: Jack L. Spence, 640 Sec. Bldg., 305 S. 16th, Omaha, NE 68102  
**Gambit\***: Thomas W. Brakke, Rt. 1, Box 57, Crete, NE 68333  
**Chess News**: Gary L. Carlson, 1723 Third Corso, Nebraska City, NE 68410  
**Double Check**: Bill Chedester, P.O. Box 51226, Lafayette, LA 70501  
**Louisiana Chess Association Bulletin\***: L. K. Kohler, 1223 Convention, Baton Rouge, LA 70802  
**Double-Speed Letter**: David Montgomery, 1306 Roy Dr., Natchitoches, LA 71457  
**Arkansas Chess Newsletter\***: Bill Wilwers, Box 271, Lavaca, AR 72941  
**Chess Digest, Chess Newsletter**: Kenneth R. Smith, P.O. Box 21225, Dallas, TX 75211

**Houston Knight Letter:** Lynne W. Babcock, 1011 Ramada, Houston, TX 77058

**Texas Knights\*:** William T. Weaver, 3617 Lamont, Corpus Christi, TX 78415

**Amarillo Chess Nut:** Tex Everett, Box 5006, Amarillo, TX 79107

**Ninth Rank:** Gary M. Huber, 5127 Albany, No. 704, Lubbock, TX 79414

**Knight Beat:** Lindsay F. Phillips, 4621 Sun Valley Dr., El Paso, TX 79924

**Colorado State Chess Association Bulletin\*:** Robert O'Donnell, 2755 15th St., Boulder, CO 80302

**Arizona Woodpusher:** Paul L. Webb, P.O. Box 13526, Phoenix, AZ 85015

**En Passant:** Myron A. Lieberman, 1444 W. Sixth St., Tempe, AZ 85281

**Chess Bulletin\*:** Spencer G. Lucas, 6315 Southern, S.E., Albuquerque, NM 87108

**Artesia Chess Club Newsletter:** June Koen, 17033 S. Leal Ave., Cerritos, CA 90701

**King's Korner:** David J. Slechta, 14927 Otsego St., Sherman Oaks, CA 91403

**Southern California Chess Newsletter:** David C. Argall, 1300 Ballista, La Puente, CA 91744

**Orange Knight:** Dewain Barber, 6560 E. Paseo Caballo, Anaheim, CA 92807

**Rio Mesa Chess Journal:** Stephen H. Wagner, 945 Garrido Dr., Camarillo, CA 93010

**Chess Briefs:** Tom Carter and Allan Fifield, 2710 Hawthorne, Bakersfield, CA 93305

**Newsletter-Region 12 ICLA:** George M. Lewis, ASI Box 69, California Polytechnic State University, San Luis Obispo, CA 93407

**Burling-Games:** Roger E. Blaine, P.O. Box 1061, Pacifica, CA 94044

**California Chess Reporter\*:** R. Burger and W. G. McClain, 244 Kearny St., Fourth Floor, San Francisco, CA 94108

**Fremont Chess Club Newsletter:** Bob Rosen, 42208 Forsythia Dr., Fremont, CA 94538

**Chess Voice:** John H. Larkins, 5804 Ocean View Dr., Oakland, CA 94618

**Sonoma County Chess News:** Charles Noland, P.O. Box 2223, Santa Rosa, CA 95405

**Chess Observer:** Steven L. Markman, 10286 McCracken Dr., Rancho Cordova, CA 95670

**Chess Correspondent:** Robert A. Karch, Box 88217, Tukwila Br., Seattle, WA 98188

**Northwest Chess\*:** Kennedy Poyser, 3138 Overhulse, N.W., No. 147, Olympia, WA 98502

**Cahler:** Mark S. Dutton, P.O. Box 6644, Postal Sta. A, Toronto, ON M5J 1A4, Canada

**Chess Federation of Canada Bulletin:** Jonathan Berry, Box 7339, Ottawa, ON K1L 8E4, Canada

**Check:** Gary Ruben, 61 Chevron Crescent, Scarborough, ON M1K 3N6, Canada

## U.S. and Canadian Chess Columns in General-Circulation Periodicals Syndicated

**Robert E. Byrne:** Box 307, Scarborough, NY 10510

**Frederick R. Chevallier:** Box 357, Meadowlark Dr., Tryon, NC 28782

**Leroy W. Duback:** 932 Edgemoor Rd., Cherry Hill, NJ 08034

**Larry M. Evans:** P.O. Box 1182, Reno, NV 89504

**George Koltanowski:** 1200 Gough St., Apt. D-3, San Francisco, CA 94109

**Joseph A. Livingston:** 400 N. Broad St., Philadelphia, PA 19101

**Shelby Lyman:** 22 Florence Ave., Apt. 27B, Freeport, NY 11520

**Ross Williams:** 5044 Litchfield Rd., San Diego, CA 92116

## Nonsyndicated

**Gardner News:** Philip Leasure, 17 Clark St., Gardner, MA 01440

**Worcester Telegram:** Stephen A. Dann, 97 Granite St., Worcester, MA 01604

**Boston Globe:** Harold B. Dondis, 583 Belmont St., Belmont, MA 02178

**Boston Herald Advertiser, Haverhill Gazette:** Orlando A. Lester, Island Ave., Peak Island, ME 04108

**Newtown Bee:** Ben McCready, High Rock Rd., Sandy Hook, CT 06482

**Wallingford Post:** Arthur W. Breen, P.O. Box 544, Wallingford, CT 06492

**Waterbury Republican:** L. Paul Golden and Rob Roy, 15 Earl St., Waterbury, CT 06710

**New York Post:** Andrew E. Soltis, Jr., 16 W. 16th St., Apt. 6SN, New York, NY 10011

**Long Island Press:** Archie Waters, 92-24 168th St., Jamaica, NY 11404

**Schenectady Gazette:** John J. Dragonetti, 2 Easton Dr., Village Green, Clifton Park, NY 12065

**Syracuse Herald-Journal:** Albert E. Highducheck, 243 Marsh Dr., Dewitt, NY 13214

**Towson Jeffersonian:** Edward R. Westing, 1215 Vermont Rd., Bel Air, MD 21014

**Washington Evening Star:** Edwin D. Albaugh, Jr., 5612 Mirrorlight Pl., Columbia, MD 21045

**Charleston Gazette-Mail:** Edward M. Foy, 1563 Lewis St., Charleston, WV 25311

**Savannah:** Kamalakar B. Raut, 708 Penwaller Rd., Savannah, GA 31410

**Toledo Today:** Marvin H. Linder, P.O. Box 6564, Toledo, OH 43612

**Toledo Blade:** Bob Miller, Box 921, Toledo, OH 43660

**Cleveland Plain Dealer:** Thomas Ellison, 10509 Clifton Rd., Cleveland, OH 44102

**Garfield Heights Leader:** Louis S. Rubin, 12819 Park Knoll Dr., Cleveland, OH 44115

**Ann Arbor News:** Donald E. Thackrey, 1 Dover Ct., Ann Arbor, MI 48103

**Menard Time:** James Perruquet, M-38044, Box 711, Menard, IL 62259

**Omaha World-Herald:** Jack L. Spence, 640 Sec. Bldg., 305 S. 16th, Omaha, NE 68102

**Siddeled Times:** William W. Ussery, P. O. Box 40, Pearl River, LA 70452

**Los Angeles Times:** Isaac Kashdan, 2231 Overland Ave., Los Angeles, CA 90064

**Hayward Review:** Richard R. Shorman, 22632 Main St., Apt. 3, Hayward, CA 94541

**Berkeley Gazette, Richmond Independent:** Lance Gilmore, 2049 Allston Wy., Berkeley, CA 94704

**Anchorage News:** Stephen W. Gordon, 850 Medfra, Apt. 1068, Anchorage, AK 99501

**Victoria Colonist:** Ray Kerr, 206-666 Cook St., Victoria, BC V8V 3Y7, Canada

## Foreign English-Language Chess Magazines

**Ajedrez:** P.O. Box 1031, Georgetown, Guyana

**British Chess Magazine:** 9 Market St., St. Leonards On Sea, E. Sussex, TN38 0DQ, England

**Chess:** Sutton Coldfield, Warwickshire, B73 6AZ, England

**Chess Bulletin of Jamaica:** 20 Merridon Bd., Kingston 3, Jamaica

**Chess Informant:** 7 Julia 30 P. Box 739, Belgrade, Yugoslavia

**Chess In Australia:** 9 Robert St., Belmont 2192, Australia

**Chess Player:** 12 Burton Ave., Carlton, Nottingham, England

**EG:** 17 New Way Rd., London, NW9 6PL, England

**ICU Newsletter:** Knockiyon Castle, Empleogue, Dublin 14, Ireland

**News Flash:** 4 the Close, Norwich, NR1 4DH, England

**New Zealand Chess:** P.O. Box 8802, Auckland, New Zealand

**Quarterly News Bulletin:** P.O. Box 4513, Capetown 8000, South Africa

**Scottish Chess:** 8 Seres Rd., Clarkston, Renfrewshire, Scotland

**Shahmat:** P.O. Box 21143, Tel Aviv, 61-210, Israel

**Singapore Chess Bulletin:** 3 Leyden Hill, Singapore 11

**South African Chessplayer:** P.O. Box 4513, Cape Town, South Africa

**South Australian Chess Bulletin:** R. W. J. Horsley, 7 Collier St., Norwood 5067, Australia

**London Times:** Harry Golombek, "Albury," 35 Albion Cres., Chalfont St. Giles, Bucks., England (columnist)

## Convenient Addresses

**Armed Forces Chess:** Capt. Edward L. Morris, HQ, USAREUR-OJA, APO New York, NY 09403

**Association of U.S. Chess Journalists:** George M. Mirjanian, 46 Beacon St., Fitchburg, MA 01420

**Chess Federation of Canada:** Jonathan Berry, Box 7339, Ottawa, ON K1L 8E4, Canada

**Correspondence Chess League of America:** Nestor E. Farris, P.O. Box 212, Montrose, CA 91020

**Federación de Ajedrez de Puerto Rico:** Apartado 3182, San Juan, PR 00904

**Federación Nacional de Ajedrez de México:** Apartado Postal 5-359, México 5, D.F., México

**Industrial Chess:** Matthew A. Pavitt, 80-38 246th St., Bellerose, NY 11426

**Intercollegiate Chess League of America:** Steven E. Zipser, 3701 Henry Hudson Pkwy., Bronx, NY 10463

**International Association of the Chess Press:** Jorge Puig Laborda, Travessera de Dalt, 32, 3.0, 1A, E-Barcelona-12, Spain

**International Correspondence Chess Federation:** David Ames, Box 888, Boston, MA 02103 (U.S. Secretary); Walter Muir, 1722 Orchard Dr., Salem, VA 24153 (U.S. Director); John F. Cleeve, 4745 W. Sixth Ave., Vancouver, BC V6T 1C4, Canada (Canadian Director)

**John G. White Department of Folklore, Orientalia, and Chess:** Cleveland Public Library, 325 Superior Ave., Cleveland, OH 44114

**World Chess Federation (FIDE):** Passeerdersgracht-32, Amsterdam-Centrum, Netherlands

# BOOKS

## ENCYCLOPEDIA OF CHESS OPENINGS

The proliferation of opening theory, including the introduction of many completely new variations, has outdated the concept of encompassing within the covers of one book all that a player might wish to know about current openings. After many years of preparation, the publishers of CHESS INFORMANT have produced the first two of five projected volumes in their ENCYCLOPEDIA OF CHESS OPENINGS. This significant work, carried out under the auspices of the International Chess Federation (FIDE), marks a new approach to the study of opening theory.

The ENCYCLOPEDIA is based upon a scientific classification of chess openings using the method of elimination (or progression). Each volume contains the fullest survey available of the openings treated therein. Annotations are accomplished by a specially devised Code System (explained on the first two pages) which eliminates the need for written text, thereby constituting a universal chess language. As in the CHESS INFORMANTS, Algebraic Notation accompanied by piece symbols is used.

If you have any interest whatsoever in opening study, this is a series YOU MUST NOT BE WITHOUT.

### Volume I 1 e4 e6 and 1 e4 e5

0209E

Volume I encompasses all openings developing from 1 e4 e6 and 1 e4 e5. Paperback, 348 pages. Copyright 1974. To obtain ENCYCLOPEDIA OF CHESS OPENINGS, Volume I, order it simply as ENCYCLOPEDIA I.

List Price \$12.00

Members \$9.00

3 (or 9 copies to one address.

\$8.00 each

Dealer or club inquiries invited for ten or more copies. we are the wholesale distributor for these books in the Americas

A-Arco  
ASB-A.S. Barnes  
B-Bantam  
BD-Board 1  
BM-Bobbs-Merrill  
BT-Batsford  
C-Chess (England)  
CC-Chessco  
CD-Chess Digest  
CH-Chilton  
CP-Chess Player  
CQB-Chicago Chess  
DM-Doubleday  
DM-David McKay

DV-Dover  
HR-Hanon Russell  
K-Kalmajs  
L-Lee Publications  
M-MacMillan  
O-Oxford Univ. Press  
P-Pitman  
PG-Pergamon  
RHM-RHM Press  
S&D-Stein & Day  
S&S-Simon & Schuster  
U-USCF  
Y-Yugoslav Chess Fed.  
Z-Zeuss

### 0337G RHM

Getler, Gligoric, Kavalek, and Spassky

#### THE NAJDORF VARIATION Sicilian Defence

With a 12-page introduction by Miguel Najdorf and with four such prominent exponents doing the annotations, this certainly has the potential to be the definitive treatise on a variation which is among the most frequently played yet controversial replies to the Sicilian. We frankly state, however, that the book is so new that at press time we did not yet have expert reactions to the analysis.

Published late in 1976. 394 5/8" x 7 1/2" pages, hundreds of diagrams, indexes to variations and to complete games by players.

Hardcover

\$9.95

### CD

Blackstock, L. S.

#### RUY LOPEZ: BREYER SYSTEM

First in a new specialist Chess Openings series from Chess Digest/Batsford. Another first is their use of figurine Algebraic Notation, rather than English Descriptive.

The Breyer (1 e4 e2 Nf3 Ne3 Bb5 a4 Bb4 Nf5 0-0 Bc7 6 Re1 b5 7 Bb3 d6 8 c3 0-0 9 h3 Nf8) is often employed by Karpov, Spassky, Portisch, Gligoric and others among the current top-ranking players. Complete games illustrate all variations and options. Recommended to the most serious students of openings.

USA publication date, May 1976. 105 5/8" x 8 1/4" pages, 90 diagrams; Index of Complete Games (by Players) and of Variations.

0333B, Paperback Edition

List Price \$5.95

Members \$5.25

\* List Price \$8.95

Members \$7.95

### 0327M CD

Moles, John

#### THE FRENCH DEFENCE

Main Line Winner

Every variation in this book starts from 1 P-K4 P-K3 2 P-Q4 P-Q4 3 N-QB3 B-N5 4 P-K3 P-QB4 5 P-QR3 BxNch 6 PxB. The author has included a great deal of discussion of the strategic ideas and ends each main section with an assessment of the systems therein.

Written for players of average club strength and above, a worthy addition to the popular Contemporary Chess Openings series.

Hardcover, first USA publication September 1975. 270 5/8" x 8 1/4" pages, 153 diagrams; Index of Complete Games and of Variations.

List Price \$9.95

Members \$9.00

### 0331W CD

Weinstein, Norman

#### THE RETI

One of America's rising young stars does an excellent job in his first monograph. The basic RETI deployment is 1 N-KB3 P-Q4 2 P-B4. Weinstein treats these four Black strategies against it: 2... PXP; P-K3; P-QB3; and P-Q5. Published February 1976 by CHESS DIGEST. 52 typewritten 6" x 9" pages, 18 diagrams, index of variations.

Pamphlet

\$2.95

English Descriptive Notation unless AN (Algebraic Notation) appears in description.

Books are Hardcover unless Paperback or Pamphlet is indicated.

## Sacrifices In The Sicilian

by David N. L. Levy

0246L DM

If ever you play the Sicilian, or play against it (and most people do one or the other), you will find this book invaluable. Each of the eleven chapters is devoted to a different, typical Sicilian sacrifice which illustrates one of the most frequently seen sacrificial ideas occurring in Sicilian games. Any tournament player who leafs through the book will find positions reminiscent of his own experience. Study of them will equip him better to handle either side the next time a sacrifice becomes possible in one of his own Sicilian games.

Contains an Index of Opening Variations and of Players. 158 5/8" x 8 1/4" pages. Copyright 1974.

List Price \$8.95

Members \$8.15

### 0335H BT

Harding and Markland

#### SICILIAN... e5

Second in the new Specialist Chess Openings series from Batsford. Beginning with this one, USCF imports the series directly from England, which means the price is considerably lower than it would otherwise have been.

Deals in detail with three controversial variations: the La Bourdonnais/Lowenthal/Lasker/Argentine/Pelikan; and Boleslavsky. A must book for the serious tournament player who doesn't want to get caught short knowing only the very few columns given on these aggressive lines in MCO 11. Figurine Algebraic Notation; USA publication date, September 1976. 121 5/8" x 8 1/4" pages, 90 diagrams, indexes of variations and of complete games.

Paperback Edition

List Price \$4.50

Members \$4.00

List Price \$7.00

Hardcover Edition

Members \$6.25

### 0326M CD

Marovic and Susic

#### KING PAWN ADVANCES

Chess Digest advances this as their answer to MCO. Covers the Sicilian, French, Ruy Lopez, Caro Kann, etc. Not in the columnar style of MCO, but in a format we think is superior. That used in the opening series authored by Pachman. Hardcover, published October 1975. Index of Variations, 261 5/8" x 8 1/4" pages, 167 diagrams.

List Price \$9.95

Members \$9.00

### E501A PG

Averbakh, Yuri

#### CHESS ENDINGS: ESSENTIAL KNOWLEDGE

The Soviet Union's leading expert on endgame theory has brought together in this book all the information needed to enable a reader knowing only the rudiments of the game to progress step by step to quite an advanced standard. At the same time, the expert player can profit from this book by using it to revise and widen his knowledge of the endgame. 135 5/8" x 7 1/4" pages. Copyright 1966, reprinted 1976.

Paperback

\$5.00

### E515A BT

Averbakh, Yun

#### BISHOP V. KNIGHT ENDINGS

The third volume of the author's classic endgame series to be translated from the Russian. The publisher states that the "English translation has been updated and is by far the most complete work on bishop v. knight endgames ever published." We find that it does cover everything, from one pawn on the board to many. Another invaluable reference work, particularly when one has an adjourned game or plays postal chess.

USA publication date, September 1976. Hardcover, 170 5/8" x 8 1/4" pages, 325 diagrams, index of players, composers, and analysis.

List Price \$9.00

Members \$8.00

### 0316E RHM

Evans, Gligoric, Hort, Keres, Larsen, Petrosian, and Portisch

#### HOW TO OPEN A CHESS GAME

Seven Grandmasters with contrasting styles give us seven different views on how to play the opening. Evans' chapter, Basic Chess Strategy, is purposely "addressed to the beginner." Gligoric and Hort then give us two chapters which will benefit some but not all players of middle strength. In ascending order, we are taken deeper into the intricacies of opening preparation and play by Portisch, Petrosian, Larsen, and Keres. Most reviewers agree the best chapters are those done by Portisch and Keres.

On balance, a bargain at the price and recommended in one or more parts) for players from Class C through Expert. 227 5/8" x 7 1/4" pages, index of openings, copyrighted 1974.

Hardcover

\$8.95

### 0338P CP

Pickoff, L. M.

#### ENTERPRISING STRATEGY IN THE OPENING

The author approaches the openings tactically and does not claim extensive analysis exists in his little booklets. From his Foreword to this one: "Herein are a few ideas that may be of use in matches or in tournaments. The treatment is not especially analytical or detailed but rather gives lines worth some practical tries." In the English Opening, Alekhine's Defense, Caro-Kann, Closed Ruy Lopez, Veresov, and several variations of the Sicilian. Appeared in early 1976. 62 4 1/4" x 7 1/4" pages, 51 diagrams.

Pamphlet

\$2.60

### N111W O

Walker, J. N.

#### CHESS OPENINGS FOR JUNIORS

At last, a major gap is filled by this most instructive book on openings, done in Algebraic Notation. It begins with a clear description of that notation system and, from the standpoint of one who hasn't previously studied openings, is the best thing available to acquire some understanding of them. Not just for "Juniors," really, but recommended for anyone desiring to become relatively easily acquainted with opening ideas. Published in 1976. 164 5/8" x 8 1/4" pages, 232 diagrams, indexes of openings, games, and players.

Paperback

\$2.95

# BOOKS

## CHESS INFORMANT, BOOK 21 SELECTED GAMES FROM JANUARY-JUNE 1976

Every six months the Yugoslav Chess Federation brings out a new book of the finest games played during the preceding half year. A unique system of annotating games by coded signs combined with Algebraic Notation avoids all language obstacles. This makes possible a universally usable and yet reasonably-priced book which brings the newest ideas in the openings and throughout the games to every chess enthusiast more quickly than ever before.

Volume 21 of this invaluable and remarkable series is now available. Containing 572 games from 43 tournaments and 11 matches, the newest addition to the series offers an unparalleled source of material for the study of openings, middle games, and endings. The notes to the games, usually by one of the players, are condensed into a special codified form which is fully explained in the introductory pages.

A special section contains, in quiz form, 45 combinations and 27 endings of note from these six months. Regular features include the Ten Best Games and the Ten Most Important Theoretical Novelties from Book 20, with the voting statistics of the judges.

The FIDE Section includes a brief review of FIDE President Euwe's 75th Birthday Celebration in Amsterdam last May; a summation of CHESS INFORMANT'S 10th Birthday Party in Belgrade last March, with eight interesting photos; and the FIDE Address List.

List Price \$10.00 ..... Members \$9.00

## OFFICIAL RULES OF CHESS C929M DM

At last, the eagerly awaited officially approved book by both the International Chess Federation (FIDE) and the U.S. Chess Federation. A must for every affiliate and everyone who is or who aspires to become a Certified Tournament Director.

The FIDE Section contains the Laws of Chess, interpretations of these laws made by the FIDE Permanent Rules Commission, and the supplemental or additional Tournament Rules of the USCF. The latter do not appear separately, but are incorporated on the same pages as the pertinent FIDE laws, but in a different typeface.

The USCF Section contains Pairing Rules for both Swiss and Round Robin events (including pairing tables), suggestions on equitable prize distributions, Tie-Breaking Rules, Speed Chess Rules, and a summary of important rules for USCF tournament players. "Any participant in a USCF-rated tournament is assumed to be familiar with all the rules and is expected to abide by them in any rated event in which he competes."

This book supersedes both the Official Chess Handbook and the Official Chess Rulebook. Its provisions became mandatorily effective October 31, 1975.

Paperback, indexed 121 5" x 7 1/4" pages. Published June 1975.

List Price \$1.95 ..... Members \$1.50

### T774E DV

*Euwe, G. Max*

#### MEET THE MASTERS

Originally written by Former World Champion Euwe to introduce to Dutch chess enthusiasts the seven other Grandmasters who were to compete with him in the celebrated AVRO Tournament in 1938. They were World Champion Alekhine plus challengers Botvinnik, Capablanca, Fine, Flohr, Keres, and Reshevsky. (Hans Kmoch and translators L. Prins and B.H. Wood added the chapter on Euwe himself.) Penetrating, personal insights, brief biographical material; 33 complete and 7 partial games which illustrate the characteristic styles of these giants of a Broddingnagian era.

1975 Dover reprint of the 1945 revised second edition. 286 5 1/2" x 8" pages, 89 diagrams.

Paperback ..... \$3.50

### T672C CP THE CHESS PLAYER

Volume 10

723 games played between January and December 1975. Chronologically speaking, these volumes overlap one another (as well as CHESS INFORMANT). The publisher seems to be playing "catch-up" with that other publication by bringing THE CHESS PLAYER out three times this year, rather than twice. Some of the games in this volume were also in INFORMANT'S 19 or 20. Different comments, however, by different annotators.

Figure Algebraic Notation, with coded symbols which are explained at the beginning of the book. 37 tournament cross-tables and several lists of final standings. Indexes of players and of openings. 212 6 1/2" x 8 1/2" pages. 145 diagrams, published June 1976, paperback.

List Price \$9.95 ..... Members \$8.95

### M418P D

*Pachman, Luděk*

#### COMPLETE CHESS STRATEGY First Principles of the Middle Game

Not really "complete," as it is the first of three intended volumes. A translation by John Littlewood of Grandmaster Pachman's major work on strategy and tactics in modern chess, especially as applied to the all-important middle game. Published December 1975 by Doubleday. Hardcover, 173 5/8" x 8 1/2" pages.

List Price \$8.95 ..... Members \$8.15

### M420P D

*Pachman, Luděk*

#### COMPLETE CHESS STRATEGY Principles of Pawn Play and the Center

The second of three intended volumes, this one deals with pawn play and achieving control of the center. The author offers practical, lucid guidelines to the average player interested in improving his middle game. After a short introductory comment, each concept is demonstrated by the analysis of actual games.

USA publication date, September 1976. Hardcover, 188 5/8" x 8 1/2" pages, 195 diagrams, indexes of openings and of games and positions.

List Price \$9.95 ..... Members \$9.25

### T784T Y

*Trifunovic, Gligoric, Maric, and Janosevic*

#### YUGOSLAV CHESS TRIUMPHS

After the USSR, the most successful chess nation of the past thirty years is Yugoslavia. Its teams are always near the top in the Chess Olympiads; they are number two in the total of Grandmasters and International Masters; three World Junior Champions have been from Yugoslavia; and its players have achieved many more successes in events throughout the world. This book is a serious effort to give, through a collection of truly fine games, a picture of all that has distinguished Yugoslav chess.

Grandmaster Janosevic has written the candid character and biographical sketches, each with a photograph, of the 20 Grandmasters (past and present) from Yugoslavia. Their 37 International Masters, 83 National Masters, and 10 Women International Masters are then given, and all of this serves as an introduction to the 731 carefully chosen games. Figurine Algebraic Notation with coded symbols (explained on the first few pages) to annotate, in the style of CHESS INFORMANT. 291 6 1/2" x 9 1/4" pages, 626 (count 'em!) diagrams, 27 photos, an index of players and their opponents, and a contents page at the end. Published August 1976.

Paperback, edition, same quality as CHESS INFORMANTS.

List Price \$12.00 ..... Members \$10.25  
Hardcover edition, for those who prefer it. Members \$12.50  
List price \$15.00

### T780T RHM

*Tal, Mikhail*

#### THE LIFE AND GAMES OF MIKHAIL TAL

Tal has fascinated the chess world for twenty years and has been the subject of many books written about him by others. Here we have Tal by Tal, and the result is one of the most captivating volumes you will ever lay your hands on. An autobiography which showcases Tal's wit, humor, and truthfulness as well as his chess genius. Begins with "My First Steps" (the first position is one from which he defeated Kholmov in 1947 when that worthy adversary gave a simultaneous exhibition in Riga) and carries us through the 1975 Alekhine Memorial. 100 games sparkingly annotated by the former World Champion, plus many unannotated ones which help weave his story.

Copyrighted 1976. Big, with 521 5 1/2" x 7 3/4" pages and more diagrams than we cared to count. Unreservedly recommended, but we can't help remarking that (as with all RHM Publications) the bookbinding is not up to the content.

Hardcover ..... \$10.95

### T778B B

*Byrne, Robert*

#### ANATOLY KARPOV

1977 brings another round of Candidates Matches, which makes this an appropriate time for an inexpensive book containing all 80 games from the 1974 series. Karpov played in 43 of these games to become the Challenger and — without ever meeting Fischer — the eventual World Champion. The notes by Byrne (who was one of the Candidates) are pertinent but not profuse, never so involved as to confuse the relatively casual player. If you don't already have a book of these games, its typical Bantam price also makes this one attractive. 180 4 1/2" x 7" pages, 242 diagrams, published August 1976.

Paperback ..... \$2.50

Mail your order, with check or money order in the amount of your purchase, to:

**U.S. CHESS FEDERATION 186 Rt. 9W  
New Windsor, N.Y. 12550**

N.Y. State residents: Add proper sales tax to all prices given.

- On orders for less than \$5.00, add 50¢ for handling and shipping.
- On orders for more than \$5.00, prices include prepaid delivery to U.S.

**NOTE FOR PURCHASERS OUTSIDE THE U.S.** All prices in U.S. dollars! Do not send cash or personal checks. Bank regulations require your remittance to be an international postal money order or a special check obtained from your bank, in either case with payment specified as being in U.S.A. currency. Otherwise we cannot fill order.

**Other than USA or Canada, please add 15% to cover added handling and shipping charges.**

**On orders to Canada, please add 5%.**

## State Chapters

State Chapters represent chess players and organizers, and guide the chess activity, within the states. State Chapters are not agents of the USCF for any purpose.

**Alabama Chess Federation:** c/o W. T. Hendry, Jr., 1120 E. Chalet Dr., Mobile, AL 36608  
**Arizona Chess Association:** c/o Myron A. Lieberman, 1444 W. Sixth St., Tempe, AZ 85281  
**Arkansas Chess Association:** c/o Gene Pynes, 7008 Morgan Dr., Little Rock, AR 72209  
**California State Chess Federation:** c/o W. Guthrie McClain, 244 Kearny St., Fourth Floor, San Francisco, CA 94108  
**Colorado State Chess Association:** c/o Royal Franklin, 3072 E. Peakview Circle, Denver, CO 80121  
**Connecticut State Chess Association Inc.:** c/o W. H. C. Newberry, 55 Clear Lake Manor Rd., North Branford, CT 06471  
**DC Chess League:** c/o Richard L. Gardner, 10913 Amherst Ave., Apt. 923, Silver Spring, MD 20902  
**Florida Chess Association:** c/o D. M. Ackerman, 4740 Northwest 24th Court, Apt. 211, Lauderdale Lakes, FL 33313  
**Georgia Chess Association:** c/o J. Earle Morrison, 145 Copeland Rd., Apt. D-1, Atlanta, GA 30342  
**Hawaii Chess Association:** P.O. Box 17576, Honolulu, HI 96817  
**Idaho Chess Association:** c/o R. S. Vandenberg, 2316 Regan Ave., Boise, ID 83702  
**Illinois Chess Association:** North Park Apts. 318, 1936 North Clark St., Chicago, IL 60614  
**Indiana State Chess Association:** c/o Cleo R. Mooday, R.R. 4, Crawfordsville, IN 47933  
**Iowa State Chess Association:** c/o Robert D. Probasco, 9553 University, Apt. 11, Des Moines, IA 50322  
**Kansas Chess Association:** c/o Robert C. Fuller, 3000 Sowers Court, Topeka, KS 66604  
**Kentucky Chess Association:** P.O. Box 70226, Riverfront Station, Louisville, KY 40270  
**Louisiana Chess Association:** 9895 Florida Blvd., Apt. 132, Baton Rouge, LA 70815  
**Maine Chess Association:** c/o Stuart Laughlin, 68 Prospect St., Portland, ME 04103  
**Maryland Chess Association:** c/o Robert Raven, 304 S. Rolling Rd., Catonsville, MD 21228  
**Massachusetts Chess Association:** c/o Stephan C. Gerzadowicz, Box 275, East Templeton, MA 01438  
**Michigan Chess Association:** c/o Jan Tazelaar, 613 Regency Square, Apt. 302, Kalamazoo, MI 49008  
**Minnesota State Chess Association:** P.O. Box 30003, St. Paul, MN 55165  
**Mississippi Chess Association:** c/o Larry M. Wright, 308 Ward Dr., Starkville, MS 39759  
**Missouri Chess Association:** c/o Charles W. Amelotti, 7005 Weil Ave., Apt. 304, St. Louis, MO 63119  
**Montana Chess Association:** c/o Bob McKinnon, 1608 Seventh St. S., Great Falls, MT 59405  
**New Hampshire State Chess Association:** c/o Parker Montgomery, P.O. Box 127, Hanover, NH 03755  
**New Jersey State Chess Federation:** c/o Denis J. Barry, 10 Safran Ave., Edison, NJ 08817  
**New Mexico State Chess Association:** c/o Richard Knight, 8605 Camino Osito N.E., Albuquerque, NM 87111  
**New York State Chess Association:** c/o William Goichberg, 450 Prospect Ave., Mount Vernon, NY 10553  
**North Carolina Chess Association:** c/o Arthur Menius, 206 A. Vance St., Chapel Hill, NC 27514  
**North Dakota Chess Association:** c/o Ron Schauer, P.O. Box 714, Mandan, ND 58554  
**Ohio Chess Association:** c/o Andy McBride, 4571 Hemingway Court, Apt. B, Columbus, OH 43227  
**Oklahoma Chess Association:** c/o Larry Broukal, 520 North 14th Pl., Apt. 303, Tulsa, OK 74119  
**Oregon Chess Federation:** c/o Harry Glidden, 243 S. Stage Rd., Medford, OR 97501  
**Pennsylvania State Chess Federation:** c/o Richard E. Jones, 770 Orville Rd., Hatfield, PA 19440  
**South Carolina Chess Association:** c/o Charles E. Braun, 7 Winthrop Dr., Aiken, SC 29801  
**South Dakota Chess Association:** c/o Gary E. Wallace, P.O. Box 1261, Pierre, SD 57501  
**Tennessee Chess Association:** c/o Peter P. Lahde, 2609 Sailboat Court, Nashville, TN 37217

**Texas Chess Association:** c/o Bill McCarty, 2615 Buchanan Ave., Odessa, TX 79763  
**Utah Chess Association:** Redwood Multi-Purpose Center, 3060 Lester, Salt Lake City, UT 84119  
**Vermont Chess Association:** c/o William T. McGrath, 518 S. Union St., Burlington, VT 05401  
**Virginia Chess Federation:** c/o Allen J. Hinshaw, 3000 Semmes Ave., Richmond, VA 23225  
**Washington Chess Federation:** P. O. Box 1631, Yakima, WA 98907  
**West Virginia Chess Association:** c/o Thomas O. Bergquest, P.O. Box 121, Ceredo, WV 25507  
**Wisconsin Chess Association:** c/o Pearle Mann, 6328 W. Hope Ave., Milwaukee, WI 53216

## State Champions

The following list of State Champions includes only those who have been reported to the Technical Director at the National Office. This is not an official list for which the USCF can assume any responsibility, as we rely solely upon the appropriate official of each State Chapter to send notification (separate from a rating report or a news report) when a new State Champion is determined (otherwise, the previous State Champion is listed again).

**Alabama:** Elias Antonas  
**Arizona:** Timothy G. Brown  
**Arkansas:** Robert M. Baskin  
**California:** David J. Strauss  
**Colorado:** John L. Watson, III  
**Connecticut:** Roger Pahl  
**Delaware:** Jonathan B. Miller  
**District of Columbia:** Herbert M. Avram  
**Florida:** Luis M. Alfonso  
**Georgia:** Michael Decker & William Layton  
**Idaho:** William Whitacre  
**Illinois:** Andrew Karlkins  
**Indiana:** Lester L. Van Meter  
**Iowa:** Daniel V. Harger & John T. Rose  
**Kansas:** Dan Pritchard  
**Kentucky:** John Demos  
**Louisiana:** Joe Katz  
**Maine:** Graham Cooper & Eric Pearson  
**Maryland:** Louis R. Chauvenet  
**Massachusetts:** John A. Peters, III  
**Michigan:** Paul Poschel  
**Minnesota:** Curt J. Brasket  
**Mississippi:** Anthony Crawley & Warren B. Porter, Jr.  
**Montana:** Robert L. Goble  
**Nebraska:** Mike Blankenau & John Milton  
**Nevada:** David Ryba  
**New Hampshire:** Keith R. Hayward  
**New Jersey:** Pal C. Benko  
**New Mexico:** Spencer G. Lucas  
**New York:** Leonid Shamkovich  
**North Carolina:** Michael W. McCann & Leroy S. Taylor, Jr.  
**North Dakota:** Stephan A. Popel  
**Ohio:** Ross Sprague  
**Oklahoma:** William M. Devin & Ted R. Grose  
**Oregon:** Clark Harmon  
**Pennsylvania:** Paul Cornelius  
**Rhode Island:** Albert C. Martin  
**South Carolina:** James R. Addison, M. Lee Hyder & Jeffrey R. Smetzler  
**South Dakota:** Samuel G. Priebe  
**Tennessee:** Emanuel Tsitsseklis  
**Texas:** Ronald W. Henley  
**Vermont:** David E. Carter & Paul F. Steiner  
**Virginia:** Richard K. Delaune, Jr.  
**Washington:** Yasser Seirawan  
**West Virginia:** Jeff V. Ashley  
**Wisconsin:** Robert A. Jones

## Top Ten Non-National Tournaments

Rank	Name	1st Pl.	Dates	State	Players
1.	4th World Open	Anatoly Lein	July 1-5, 1976	NY	775
2.	4th Annual Paul Masson American Class Ch'ships	Walter Browne	July 24-25, 1976	CA	756
3.	Greater NY Congress	Leonid Shamkovich	Dec. 26-28, 1975	NY	615
4.	Golden State Class Ch'ships '76	Chris Hans Carl Pilnick	May 29-31, 1976	CA	474
5.	Golden Gate Open	James Tarjan	July 3-5, 1976	CA	468
6.	Golden West Class Ch'ships '76	John Skratulia	Sept. 4-6, 1976	CA	349
7.	Atlantic Open	Salvatore Matera Bernard Zuckerman	Nov. 28-30, 1975	NY	345
8.	1976 LERA Mem'l Class	Robert Newbold John Watson Jay Whitehead	May 29-31, 1976	CA	252
9-10.	7th Southern Congress	Randy Kolwick Nicholas Pelavada	March 27-28, 1976	GA	234
9-10.	9th Liberty Bell	Leonid Shamkovich	Jan. 10-11, 1976	PA	234



## Results of U.S. Players In FIDE-Rated Foreign Tournaments

Date	Site	Players	Place	Score	Category	GM Norm	IM Norm
7/15-8/2/75	Lublin, Poland	Kaplan	9-13	5½- 7½	8	8.04	6.36
9/2-17/75	Costa Brava, Spain	Benko Chellistorp	7 10-11	5½- 5½ 4 - 7	7	7.70	6.27
9/17-10/1/75	Plovdiv, Bulgaria	Commons	10	5½- 7½	6	8.76	7.20
10/1-28/75	Szolnok, Hungary	Benko Mednis	4- 6 7- 8	7½- 6½ 7 - 7	9	8.96	7.00
10/3-15/75	Manila, Philippines	Kavalek	8-11	3½- 6½	12	6.40	4.00
10/4-22/75	Novi Sad, Yugoslavia	Tarjan	2- 4	9½- 5½	7	10.50	8.55
10/14-11/4/75	Moscow, U.S.S.R.	Byrne, R.	11	6 - 9	12	7.95	6.00
11/7-24/75	Subotica, Yugoslavia	Tarjan Benko	1 8	8 - 3 5 - 6	7	7.70	6.27
11/13-25/75	Portimas, Portugal	Evans Weinstein	1 2	7½- 3½ 7 - 4	7	6.27	7.70
12/27/75-1/13/76	Hastings, England (Challengers)	Dlesen	4-6	7 - 3	-	-	-
12/27/75-1/5/76	Reggio Emilia, Italy	Formanek	2- 4	5 - 4	4	-	6.03
12/29/75-1/15/76	Hastings, England (Premier)	Matera	8-10 14-16	7½- 7½ 5½- 9½	10	9.00	7.05
1/7-22/76	Majdenpek, Yugo- slavia	Benko Tarjan	10-11 12-13	6 - 8 5½- 8½	9	8.32	6.50
1/15-29/76	Wijk-aan-Zee, Holland (I) Wijk-aan-Zee, Holland (II)	Browne Christiansen	4- 5	6½- 4½	6	8.03	6.80
1/19-31/76	Orense, Spain	Rogoff	1-3	7½- 3½	8	7.37	5.83
2/5-18/76	Malaga, Spain	Byrne, R. Christiansen	1 2	9½- 3½ 9 - 4	8	8.71	6.89
2/29-3/18/76	Skopje, Yugoslavia	Tarjan Reshevsky	4-5 13-14	9 - 6 5½- 9½	10	9.00	7.05
4/3-24/76	Las Palmas, Spain	Byrne, R. Rogoff	3- 4 9	9½- 5½ 8 - 7	10	9.00	7.05
4/10-26/76	Birmingham, En- gland	Meyer, E.	9	3½- 6½	5	7.60	6.40
4/25-5/8/76	Lanzarote, Spain	Weinstein	3-6	6 - 5	7	7.70	6.27
5/13-24/76	Amsterdam, Holland	Browne	2	3 - 3	-	-	-
5/13-24/76	Amsterdam, Holland	Browne	2	3 - 3	-	-	-
6/12-7/12/76	Manila, Philippines (Men's Interzonal I)	Kavalek Browne	7-9 15	10½- 8½ 8½-10½	12	10.07	7.60
7/6-19/76	Amsterdam, Holland (Masters)	Matera	5	6 - 5	6	8.03	6.60
7/11-8/8/76	Biel, Switzerland (Men's Interzonal II)	Byrne, R. Rogoff	5-7 13-15	11½- 7½ 9 - 10	12	10.07	7.60
7/11-22/76	Manila, Philippines	Browne	4	2 - 4	-	-	-
7/29-8/7/76	Antwerp, Belgium	Rohde, M.	1	7½- 1½	-	-	-
8/4-22/76	Budapest, Hungary	Mednis Weinstein	5-7 10-14	7½- 8½ 6½- 9½	10	9.00	7.05
8/11-22/76	Plovdiv, Bulgaria	Commons	1	9½- 2½	6	9.49	7.80
8/16-26/76	Montilla, Spain	Kavalek Byrne, R.	2-4 6	5½- 3½ 4½- 4½	10	5.40	4.23
8/24-9/15/76	Reykjavik, Iceland	Matera Vukceвич	10 11	7½- 7½ 6 - 9	9	9.60	7.50

Foreign

Country

### Abbreviations

The following three-letter abbreviations for countries affiliated with FIDE will be used in crosstables appearing in *Chess Life & Review* beginning in 1977. Crosstables for tournaments with mostly U.S. players will use FOR for a foreign player where a specific country is not indicated.

Albania	ALB	Jordan	JOR
Algeria	ALG	Lebanon	LEB
Andorra	AND	Luxembourg	LUX
Argentina	ARG	Malaysia	MAL
Australia	AUL	Malta	MAT
Austria	AUS	Mauretania	MAU
Bahamas	BAH	Mexico	MEX
Belgium	BEL	Monaco	MON
Bermuda	BER	Mongolia	MOG
Bolivia	BOL	Morocco	MOR
Brazil	BRA	Nepal	NEP
Brit. Virgin Isl.	BVI	Netherlands	NET
Brunei	BRU	Neth. Antilles	NEA
Bulgaria	BUL	New Zealand	NEZ
Burma	BUR	Nicaragua	NIC
Canada	CAN	Nigeria	NIG
Chile	CHL	Norway	NOR
China	CHN	Pakistan	PAK
Colombia	COL	Panama	PAN
Costa Rica	COS	Papua New	PNG
Cuba	CUB	Guinea	PAR
Cyprus	CYP	Paraguay	PER
Czechoslovakia	CZE	Peru	PHI
Denmark	DEN	Philippines	POL
Dominican Rep.	DOM	Poland	POR
Ecuador	ECU	Portugal	PUE
El Salvador	ELS	Puerto Rico	RHO
England	ENG	Rhodesia	RUM
Faroe Islands	FAR	Rumania	SCO
Finland	FIN	Scotland	SIN
France	FRA	Singapore	SOA
Ger. Dem. Rep.	GDR	South Africa	SPA
Fed. Rep. of Ger.	GFR	Spain	SUR
Ghana	GHA	Surinam	SWE
Greece	GRE	Sweden	SWI
Guatemala	GUA	Switzerland	SYR
Guernsey	GUE	Syria	THA
Guiana	GUI	Thailand	THT
Honduras	HON	Trinidad & Tobago	TUN
Hong Kong	HOK	Tunisia	TUR
Hungary	HUN	Turkey	URU
Iceland	ICE	Uruguay	USA
India	IND	United States	UNO
Indonesia	INO	Union of Soviet	URS
Iran	IRN	Soc. Rep.	UVI
Iraq	IRQ	U.S. Virgin Isl.	VEN
Ireland	IRE	Venezuela	WAL
Israel	ISR	Wales	YUG
Italy	ITA	Yugoslavia	ZAR
Jamaica	JAM	Zaire	ZAM
Japan	JAP	Zambia	

Single copies of the 1977 USCF Yearbook are available at 75¢ each, plus 50¢ handling charge. If ordering more than one copy at 75¢ each, handling charge may be omitted. Send orders to U.S. Chess Federation, 186 Rt. 9W, New Windsor, NY 12550.

# Crosstables of International Tournaments Held in the United States

## Manhattan Chess Club International (New York, New York; July 8-23, 1976)

Players	1	2	3	4	5	6	7	8	9	10	11	12	13	14	15	16	Score	Place
1 Norman Weinstein	x	1	½	0	½	½	1	½	½	1	½	½	1	1	1	1	10½-4½	1-3
2 Anatoly Lein	0	x	½	½	1	1	½	1	½	½	1	0	1	1	1	1	10½-4½	1-3
3 Leonid Shamkovich	½	½	x	1	0	1	1	½	0	½	1	½	1	1	1	1	10½-4½	1-3
4 Milan Vukic	1	½	0	x	½	½	0	0	1	½	½	1	1F	1	1	1	9½-5½	4
5 Michael Rohde	½	0	1	½	x	½	½	½	½	1	½	1	0	1	½	9	5-7	5-7
6 Helgi Olafsson	½	0	0	½	½	x	½	½	½	1	½	1	1	1	½	9	5-7	5-7
7 Roberto Kalmo	0	½	0	1	0	½	x	1	½	1	½	½	½	1	1	9	5-7	5-7
8 Jon Tisdall	½	0	½	1	½	½	0	x	½	½	½	0	½	1	1	8	7	8-9
9 Mark Diesen	½	0	1	0	½	0	½	½	x	½	½	½	½	1	1	8	7	8-9
10 Julio Kaplan	0	½	0	½	½	½	0	½	½	x	½	0	½	1	1	7½-7½	10	10
11 Bruce Amos	½	½	0	½	0	½	½	½	½	½	x	½	1	½	1	7	8	11-12
12 Edmar Mednis	½	0	½	0	½	0	½	1	½	1	½	x	½	½	½	7	8	11-12
13 Milorad Boskovic	0	1	0	0F	0	½	½	½	½	0	½	x	0	½	1	5	10	13
14 Orest Popovych	0	0	0	0	1	0	0	0	0	½	½	1	x	0	1	4	11	14
15 Michael Wilder	0	0	0	0	½	0	0	0	0	0	½	½	1	x	1	3½-11½	15	15
16 Joel Benjamin	0	0	0	½	0	0	0	0	0	1	½	0	0	0	x	2	-13	16

Category: 6 GM Norm: 10.95 IM Norm: 9.00

# Crosstables of National Tournaments

## U.S. Women's Championship & FIDE Zonal Playoff for Second Place

(El Paso, Texas; December 28, 1975-January 2, 1976)

Players	1	2	3	4	Score
1 Ruth Orton	1	0	1	1	3-1
2 Ruth Herstein	0	1	0	0	1-3

## U.S. Junior Championship

(Memphis, Tennessee; June 20-26, 1976)

Players	1	2	3	4	5	6	7	8	Score	Place
1 Mark Diesen	x	1	½	½	½	½	1	1	5	1-2
2 Michael Rohde	0	x	½	1	1	½	1	1	5	1-2
3 Kenneth Regan	½	½	x	0	½	1	½	1	4	3
4 Yasser Seirawan	½	0	1	x	1	1	0	0	3½	4-5
5 Ronald Henley	½	0	½	0	x	½	1	1	3½	4-5
6 Jonathan Tisdall	½	½	0	0	½	x	½	1	3	6
7 John Fedorowicz	0	0	½	1	0	½	x	0	2	7-8
8 Nick DeFirman	0	0	0	1	0	0	1	x	2	7-8

## U.S. Women's Championship

(Teton Village, Wyoming; July 11-25, 1976)

Players	1	2	3	4	5	6	7	8	9	10	11	Score	Place
1 Diane Savereide	x	½	1	½	1	1	1	0	1	1	1	8	1
2 Dorothy Teasley	½	x	0	½	½	½	1	0	1	1	1	6	2-3
3 Ruth Herstein	0	1	x	½	0	½	0	1	1	1	1	6	2-3
4 Gisela Gresser	½	½	½	x	1	½	0	1	0	1	0	5½	4-6
5 Marilyn Simmons	0	½	1	0	x	0	1	1	1	½	½	5½	4-6
6 Rachel Crotto	0	½	½	1	x	0	1	0	1	1	½	5½	4-6
7 Ruth Orton	0	0	1	0	0	1	x	½	½	1	1	5	7
8 Ruth Donnelly	1	1	0	½	0	½	x	1	0	½	½	4½	8
9 Hedvig Olsson	0	0	0	1	0	1	½	0	x	0	1	3½	9-10
10 Mona Karf	0	0	0	0	½	0	0	1	1	x	1	3½	9-10
11 Eva Aronson	0	0	0	1	½	0	0	½	0	0	x	2	11

# CHESS BY MAIL

If you have not played in our postal tourneys before, please specify in which class you would like to start. We recommend Class A for unusually strong players, Class B for above average players, Class C for about average players and Class D for below average. If you have played, please state your probable rating.

Mail proper entry coupon below, or copy of it, to U.S. CHESS FEDERATION, 186 Rt. 9W, New Windsor, NY 12550.

**NOTE:** Assignments may take up to 2 months, Class A longer.

## CLASS TOURNAMENT

Enter one of the 4 men groups.

You will be assigned to a section with 3 other players about equal to yourself in playing skill. You play both White and Black against the other three. You play all six games simultaneously, two games on one set of postcards, thus saving postage.

Your results & Postal Chess rating will be recorded and published.

The entry fee is only \$3.50.

## PRIZE TOURNAMENT

Enter one of the 7 man groups, reserved for veterans with no forfeit losses in last two assignments.

You will be assigned to a section with six other players about equal to yourself in playing skill. You play White against three of your opponents, Black against the other three—and you play all six games simultaneously, and with knowledgeable players whom you can expect to fight to a finish.

You stand a good chance of winning a prize, too! Credits of \$7.00 and \$3.00 are awarded to 1st and 2nd place winners in each section. Credits may be used to purchase chess books or equipment.

The entry fee is only \$5.00.

Fill out appropriate spaces in coupon below with care to be legible (print).

Be sure to give identification number, to ensure your proper address on our computer, and future changes all by one notice to the USCF. (If you have no ID # now, put NONE in the blank.) It is the 8 digit number, top left on address label now on each issue of your copy of CL&R.

U.S. CHESS FEDERATION 186 Rt. 9W, New Windsor, NY 12550	<input type="checkbox"/> Check if a new- comer to Postal Chess & state class (below)
I enclose \$..... Enter my name in ..... (how many?) sections of your Postal Chess CLASS tournaments .....	
<input type="checkbox"/> Postal Chess PRIZE tournaments .....	
The amount enclosed covers the entry fee (check or money order, not cash) of \$3.50/\$5.00 (strike out one) a section.	
Kindly start/continue (strike out one) me in Class .....	
Ident. No. ....	
NAME .....	
ADDRESS .....	
CITY .....	
STATE .....	
ZIP .....	

















# U.S. Open

(Fairfax, Virginia; August 15-27, 1976)

Player	1	2	3	4	5	6	7	8	9	10	11	12	Sc.				
1 Leonid Shamkovich	NY	W21	W49	W69	W74	W39	D10	W7	D2	D4	W11	D3	W14	10	51 John Nardandrea	FL	8
2 Anatoly Lein	NY	W218	W105	W234	W55	W11	W37	D40	D1	W10	D3	D14	W12	10	52 William Orton	AR	8
3 William Lombardy	NJ	W193	W144	W54	W27	L10	W70	W56	W17	W24	D2	D1	D6	9%	53 Rodney Malpert	NE	8
4 Walter Browne	CA	W172	W99	W140	D43	W116	D24	W25	W37	D1	W39	D6	D5	9%	55 Thomas Costigan	PA	8
5 William Martz	WI	W220	W233	W81	D391	W46	W16	D38	D18	W28	D8	W10	D4	9%	56 Brian Hulse	NY	8
6 Pal Benko	NY	W142	W229	W371	D46	D391	W13	W48	W38	D11	W18	D4	D3	9%	57 Andrew McDaniel	OH	8
7 John Watson	NE	W261	W138	D63	W68	W33	W26	L1	D167	W29	W47	D25	W28	9%	58 William Hook	MD	8
8 Ronald Henley	TX	W243	W86	L168	L170	W30	W140	D74	W117	W60	D5	D24	W24	9%	59 Rajju Nekvasil	DC	8
9 Larry D. Evans	NY	W231	L12	D62	W178	D12	D371	W84	D50	W28	D13	W60	W25	9%	60 Walter Morris	IA	8
10 John Fedorowicz	NJ	W403	W141	W133	W80	W3	D1	D12	W40	L2	W27	L5	W45	9%	61 Alan Pincus	NY	8
11 Charles Powell	VA	W452	W259	W52	W13	L2	W65	W115	W15	D6	L1	D41	W42	9%	62 Oliver Chernin	HI	8
12 Arnold Denker	FL	W279	W523	W53	W67	D25	W44	D10	L24	W85	W42	W21	L2	9%	63 Kenneth Holroyd	VA	8
13 Fred Lindsay	MI	W423	W208	W186	L11	W62	L6	W170	W20	W32	D9	W31	D19	9%	64 Lewis Cohen	NY	8
14 Calvin Blocker	OH	W309	W569	W61	D75	D70	W77	D66	W45	W41	W15	D2	L1	9%	65 John Pamielens	NY	8
15 Arthur Bisguier	NY	W321	D353	W300	W83	W41	D48	W29	L11	W43	L14	W50	W47	9%	66 Mark Ginsburg	MD	8
16 Thomas Wozeny	OH	W520	W244	D95	W121	W63	L5	D77	W184	D30	D66	W67	W41	9%	67 Harold Mouzoun	VA	8
17 Danny Kopeck	NY	W349	W171	W169	W50	D26	D75	W43	L3	L115	W94	W126	W55	9%	68 Matthew Looks	NY	8
18 John Meyer	DC	W219	L170	W241	W259	W168	W184	W36	D5	W74	L8	D45	W34	9%	69 Eric Tangborn	WA	8
19 Nick DeFirmian	CA	W276	D287	W238	W91	D250	D80	L41	W89	W304	W33	W44	D13	9%	70 Richard Delaune	VA	8
20 Boris Baczyński	VA	W433	W225	W304	L26	W59	D54	D80	L13	W120	WF	W115	W43	9%	71 Curtis Carlson	CO	8
21 Timothy Taylor	PA	W157	W216	L250	W281	L133	W217	W120	W80	W75	W115	L12	W46	9%	72 Mark Eidemiller	PA	8
22 Jeffrey Kastner	NY	W284	W215	W23	D112	D110	W133	L37	L51	W233	W93	W116	W38	9%	73 Peter Cook	VA	8
23 Arthur Smith	VA	W327	W372	L22	D530	L239	W154	W155	W180	W240	D74	W56	W39	9%	74 Steven Odendahl	MD	7%
24 Elliott Winslow	MO	W285	W479	W78	D250	W119	D4	W76	L12	L3	D35	W30	L8	8%	75 Edward Nathan Kites	VA	7%
25 Matthew Green	NY	W241	W103	D62	W145	D12	D336	L4	W69	W250	W37	D7	L9	8%	76 Walter Stein	NY	7%
26 John Hudson	PA	W322	W253	W137	W20	D17	L7	W49	L39	D61	W68	W105	W76	8%	77 Denis Strenszwik	MD	7%
27 Barry Davis	MD	W180	W485	W89	L3	W72	L76	W102	W165	W40	L10	D37	W77	8%	78 Thomas Beckman	VA	7%
28 Craig Barnes	CA	W286	W148	L116	W103	D165	W106	W53	W66	L50	W77	W76	L7	8%	79 Charles Thiesen	MD	7%
29 Frank Murphy	FL	W385	L187	W219	W151	W124	W79	L15	W69	L7	W64	D53	W84	8%	80 Joel Benjamin	NY	7%
30 Harvey Bernard	VA	W340	W92	L37	W201	L8	W235	W175	W55	D16	W167	L24	W74	8%	81 Lawrence Stevens	VA	7%
31 Orest Popovych	NY	W501	W182	L59	W117	D93	W61	W371	L60	W101	W81	L13	W83	8%	82 Paul Harless	WV	7%
32 Karl Burger	NY	W291	D238	D255	W181	W486	W81	D75	D34	L13	D78	W79	W109	8%	83 Richard Robinson	NY	7%
33 John Rafter	MD	W295	W122	D62	W145	L7	W49	W110	W119	W110	W176	W66	W81	8%	84 Walter Bruce	NY	7%
34 Herbert Avram	MD	W288	D199	W237	L475	W220	W190	W52	D32	W132	W38	D8	L18	8%	85 Diane Saverese	CA	7%
35 Michael Proschan	FL	D549	W257	D111	D247	W222	D136	W178	W114	W58	D24	D39	D44	8%	86 Marvin Winfree	VA	7%
36 Sidney Bernstein	NY	W441	W247	L112	W337	W122	W174	L18	L76	D99	W216	W165	W97	8%	87 Richard Kause	MD	7%
37 Jonathan Tisdall	NY	W387	W128	W30	W85	W166	L2	W22	L4	W50	L25	D27	D65	8%	88 Ray Cornell	PA	7%
38 James Sherwin	NY	W272	W248	W79	D63	W57	W42	D5	L6	W67	L34	W66	L22	8%	89 David Eisen	VA	7%
39 Robert Eberlein	MD	W348	W178	W51	W69	L1	W169	D78	W26	W167	L4	D35	L23	8%	90 Peter Sarnak	FO	7%
40 Peter Bylasias	FO	W241	W88	W65	D20	W45	W113	D2	L10	L27	D129	D74	D53	8%	91 Leroy Taylor	MD	7%
41 Jerome Hanken	CA	W319	D320	W199	W164	L15	W88	W19	W113	L14	W79	D11	L16	8%	92 Gary Coopersmith	MD	7%
42 Thomas Sweeney	NY	W274	W108	W135	W98	D336	L38	W68	D78	W116	L12	W51	L11	8%	93 Richard Faber	VA	7%
43 Danny Shapiro	NY	W364	W183	W120	D4	D90	W129	L17	W149	L15	W124	W72	L20	8%	94 Moe Alibadi	VA	7%
44 Peter Gould	VA	W295	W217	D165	W95	W475	L12	W83	D75	D51	W68	L19	D35	8%	95 Richard Noel	OH	7%
45 Peter Thompson	MN	D189	W139	W158	W353	L40	W89	W84	L14	W168	W52	D18	L10	8%	96 George Hardman	VA	7%
46 Michael Senkiewicz	NY	W454	W209	W242	D6	L5	L82	W62	W152	W121	D53	W149	L21	8%	97 Mark Handick	VA	7%
47 Lev Bloniarovich	VA	W342	L137	W221	W497	D52	D236	D63	W65	W64	L7	W10	L15	8%	98 Homer Jones	VA	7%
48 Sam Greenlaw	MD	W230	W174	W84	D110	W112	D15	L6	D81	D91	W119	D54	D68	8%	99 Wilson Gibbins	VA	7%
49 Ivan Romanenko	MD	W270	L1	W180	W186	D234	W33	L26	W107	L88	W143	W98	D54	8%	100 Marvin Cooper	MD	7%
50 Kenneth Clayton	DC	W191	W368	W170	L17	D100	W144	W171	D9	L37	W88	L15	W110	8%	101 Michael Goldenberg	MD	7%



U.S. Chess Federation  
186 Rt. 9W  
New Windsor, NY 12550  
Address Correction Requested

A5001439 A0178  
GARDEN STATE CHESS ASSN  
170 HELM AVE

HOOD-RIDGE

NJ 07075

BULK RATE  
U. S. Postage  
PAID  
Permit No. 3  
East Dubuque, Ill. 61025

# CLASSIFIEDS

U.S. Chess Federation, 186 Rt. 9W, New Windsor, NY 12550

**As little as \$7.50!**  
(Affiliates \$5.25)

**Categories:**

**Activities** (tournaments, club doings, opponents wanted, etc.);  
**For Sale; Instruction; Services** (equipment repairs, analysis, photography, freelance services, etc.); **Wanted to Buy or Trade.** No other categories.

**Eligibility:**

Classifieds are available to everyone, including commercial advertisers. Ad copy subject to USCF approval. Display ads not accepted in this section. No photos, no artwork.

**Responsibility and Disclaimer:**

Ads are printed exactly as submitted and advertiser accepts sole responsibility. Neither USCF nor any officer or employee of USCF guarantees advertised merchandise or services. In case of error or omission, our liability is limited to rerunning corrected ad at no charge to advertiser. No refunds.

**Copy and Deadlines:**

Copy must be typewritten or printed. Compose ads carefully. Telephoned copy or insertion orders not accepted.  
Copy received by the 15th of a month appears the second month following (e.g., copy received by Jan. 15 appears in March). Ads are printed in the earliest possible issue regardless of date received.

**Cancellations and Changes:**

Cancellations not accepted for any reason. Changes in copy are regarded as new ads and must be resubmitted as such, including full

copy and correct payment. Ads once submitted may not be changed for first insertion.

**Rates:**

**Minimum 15 words.** 6 point type 50¢ each word; 8 point type 75¢ each word; 10 point type \$1 each word. First word of all ads in **BOLD FACE CAPS** (maximum 15 characters). Bold face or caps not available for other words. Type sizes may not be combined in same ad. Word count: abbreviations, house numbers, phone numbers, initials, etc., count as one word. "P.O. Box 41" is 3 words, "211 W. 3rd St." is 4 words, "J.P. Jones" is 2 words, but "John P. Jones" is 3 words, "2 PM" is one word. Two-word cities count as one word, state abbreviation is one word, zip code free.

**Discounts:**

Full rate for first and second insertions. For three consecutive insertions deduct 10% (full rate multiplied by 3, then subtract 10%); 6 consecutive insertions deduct 15%; 9 consecutive insertions deduct 20%; 12 consecutive insertions deduct 25%. No other combinations offered. USCF Affiliates in good standing (supply identification number and expiration date) may deduct a flat 30% on all ads; quantity discounts not available to Affiliates. USCF members are not automatically Affiliates.

Send check or money order (no cash) with insertion order and copy to USCF, 186 Rt. 9W, New Windsor, NY 12550. Shortage delays publication until correct amount is received. Be sure to specify type size.

**Sample Ads**

GAMBIT tournament every Sunday 2 PM, \$3 EF, 3 trophies. Bring clock. Nonrated. Shakhmaty Chess Club, County High School, 15 Main, Los Angeles, CA 91006.

ANTIQUÉ chess set, 4½" King, ivory, Staunton. Best offer over \$300. Photo on request. Smith, 301 Neptune, New York, NY 10013.

DEUTSCHE Schachzeitung, 1901-17, bound volumes. Trade for English chess books. Send list. R. Henschel, Ottostrasse 17, Hamburg, Germany.

Above ad is 6 point type, 22 words, \$11.

Above ad is 8 point type, 19 words, \$14.25.

Above ad is 10 point type, 18 words, \$18.